

उडुपी कोचीन शिपयार्ड लिमिटेड

पत्तन, पोत परिवहन और जलमार्ग मंत्रालय
भारत सरकार



UDUPI COCHIN SHIPYARD LIMITED

Ministry of Ports, Shipping and Waterways,
Government of India

Date: 04.12.2025

TENDER ENQUIRY

Dear Sirs,

This tender enquiry is for Rope Hatch which is required for 8 no's of 6300DWT vessel being constructed at Udupi Cochin Shipyard Limited (UCSL), Malpe, (A Govt. of India Enterprises).

Sealed Tenders in duplicate, super scribing the Enquiry Number & Last date for receipt of Quotations on the envelope, are invited TWO BID SYSTEM two separate covers as 'Part- I Techno-commercial' and 'Part- II Price' - both enclosed in the single envelope, for the supply of following materials so as to reach the undersigned on or before the last date and time shown. Tenders should be addressed to Assistant General Manager (Materials), Udupi Cochin Shipyard Limited, Malpe Harbor Complex, Malpe. Udupi-576108, Karnataka, India.

Submission by Email: Offers (both Part- I Techno-commercial' and 'Part- II Price) in two separate password protected PDF file format, can also be made by E-mail (sony.clement@udupicsl.com, purchase2@udupicsl.com/ sunilsnair@udupicsl.com/ muhammad.anas@udupicsl.com/ midhunthomas@udupicsl.com) on or before, the last date & time of receipt of tender as shown below, if delivery of sealed offers cannot be ensured at UCSL on the due date. The offer PDF files (Part- I Techno-commercial' and 'Part- II Price) to be named clearly (UCSL/MAT/PROJ/2025-26/1755- Techno-commercial and UCSL/MAT/PROJ/2025-26/1755 - Price bid)

Enquiry No.	Enquiry Date	Last Dt. & Time for Receipt of Tender	Tender Opening Date & Time
UCSL/MAT/PROJ/2025-26/1755	04.12.2025	26.12.2025, 15:30:00	26.12.2025, 15:30:00

पंजीकृत कार्यालय : एस. नं. 377,
पझनूर सलाई, पझमथुर गाँव, बुक्कथुराई पोस्ट,
मदुरान्तक तालुका, चेंगलपट्टु - 603 308
तमिलनाडु, भारत।

पंजीकृत कार्यालय : मल्पे हार्बर कॉम्प्लेक्स, मल्पे,
उडुपी - 576 108, कर्नाटक, भारत।

Registered office: S. No.377,
Pazhanoor Salai, Pazhamathur Village,
Bukkathurai Post, Mathuranthagam Taluk,
Chengalpattu - 603 308, Tamil Nadu, India

Corporate Office: Malpe Harbour Complex,
Malpe, Udupi - 576 108, Karnataka, India

Phone:
+91 820 2538600
Fax:
+91 820 2538605
E-mail:
info.tsl@udupicsl.com
www.udupicsl.com

CERTIFIED
ISO 9001:2015
ISO 14001:2015
ISO 45001:2018



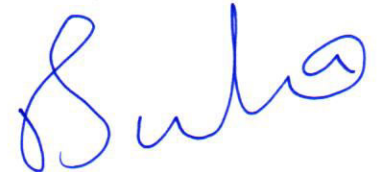
Intend No:	Reference No:	TTIGHTNESS TYPE	MINIMUM CLEARANCE OPENING	COAMING HEIGHT	UOM	QTY	YARD NO:	Required Date at UCSL
1710002934 & 1710002935	102	WEATHERTIGHT HATCH	800X800	600	8	Nos	UY-175 to UY182	UY-175 by 05.02.2026
	103	WATERTIGHT HATCH	800X800	600	8	Nos		UY-176 by 21.04.2026
	104	WEATHERTIGHT HATCH	800X800	600	8	Nos		UY-177 by 10.07.2026
	105	WEATHERTIGHT HATCH	800X800	600	8	Nos		UY-178 by 08.10.2026
	106	WATERTIGHT HATCH	800X800	700	8	Nos		UY-179 by 05.02.2027
	107	WATERTIGHT HATCH	DIA 270	600	8	Nos		UY-180 by 21.04.2027
	108	WATERTIGHT HATCH	1280X1170	700	8	Nos		UY-181 by 10.07.2027
	112	WATERTIGHT HATCH	700X700		8	Nos		UY-182 by 08.10.2027
	202	WEATHERTIGHT HATCH	547X820	600	8	Nos		
	203	WEATHERTIGHT HATCH	547X820	600	8	Nos		
	204	WEATHERTIGHT HATCH	835X750		8	Nos		
	301	WATERTIGHT HATCH	1070X1070	600	8	Nos		

In case of commercial queries please contact			
Name	Designation	Mobile no.	E-mail
Mr. Sunil S Nair	Manager (Material)	9884917724	sunilsnair@udupicsl.com
Mr. Muhammad Anas	Manager (Material)	8129443366	muhammad.anas@udupicsl.com
Mr. Midhun Thomas	Assistant Manager (Materials)	9995777763	midhunthomas@udupicsl.com
In case of technical queries please contact			
Name	Designation	Mobile no.	E-mail
Mr. Sarun S Kumar	Manager- Hull Design	9952971296	sarun.kumar@udupicsl.com design@udupicsl.com

Enclosures:

1. Purchase Technical Specification (PTS-175-061- Rev 1) - Annexure 1
2. General Terms and Conditions of procurement - Annexure 2
3. Price bid format - Annexure 3
4. Bank Guarantee/Security Deposit Format - Annexure 4

For Udupi Cochin Shipyard Ltd,



Authorized Signatory

सोणि क्लेमेन्ट टी एम
SONY CLEMENT T M
सहायक महाप्रबंधक/ASSISTANT GENERAL MANAGER
उडुपि कोचीन शिपयार्ड लिमिटेड
UDUPI COCHIN SHIPYARD LIMITED
माल्ये, कर्नाटक/MALPE, KARNATAKA-576 108

Rev.	Pages	Description	Date	Sign.
0	4	First Issue	24-06-2025	Chaturanan
1	4	gantry and rope hatch updated	12-08-2025	Chaturanan

6300 TDW DRY CARGO VESSEL



UDUPI COCHIN SHIPYARD LTD (A Cochin Shipyard Company)

YARD NO	UY175 - UY182	6300 TDW DRY CARGO VESSEL															
OWNER	WILSON ASA, NORWAY	PURCHASE TECHNICAL SPECIFICATION OF HATCHES															
APPROVED	V LALITHA DEVI <i>V. Lalitha</i>																
CHECKED	M DINAKARAN <i>M. Dinakaran</i>																
PREPARED	CHATURANAN <i>Chaturanan</i>																
DATE	24-06-2025	Doc. No.: PTS-175-061												Rev. No: 1			
ISSUED TO	NO. DEP.																

This document/specification is the property of Udupi Cochin Shipyard Limited, and it must not be copied or the contents thereof or any information received in conjunction therewith must not be imparted /shared to any third party or utilized for any other purpose. The receipt of the document/specification implies that the conditions as mentioned herein are accepted.



UDUPI COCHIN SHIPYARD LTD
(A COCHIN SHIPYARD COMPANY)
MALPE – 576108 INDIA

6300 T DRY CARGO VESSEL

HATCHES

Yard No.

Doc. No

Rev. No

Page No.

UY175 -UY182

PTS-175-061

1

2

TECHNICAL SPECIFICATION FOR HATCHES

1. SCOPE OF SUPPLY

This specification relates to the manufacture and supply of **Hatches** for the **6300T DRY CARGO VESSEL** being built at Udupi Cochin Shipyard Ltd. The manufacturing and supply shall be as per the attached plans.

Classification society: Det Norske Veritas (DNV).

The quantity table listed in Annexure-1. The quantity mentioned below is for 01 nos vessel. The actual requirement is for 08 nos vessels.

2. CONDITIONS OF SUPPLY

- a) The Material grade of hatches and coaming is DNV Grade A.
- b) The plates shall be blasted to SA 2.5 and shop primed before fabrication and joints are to be prepared and painted with marine grade zinc silicate before supply.
- c) Hatches to be painted before mounting the rubber seals to avoid corrosion.
- d) The entrance/escape hatches to be operated by an individual and necessary gas spring/similar arrangement shall be provided as per drawing enclosed.
- e) Entrance hatches to be executed by a gas spring for easy opening/closing of the hatch.
- f) Water and weather tight hatches to be provided with necessary toggles in accordance with the rules and regulations of Class or Authorities and in line with specification.
- g) All the hatches except escape hatches are to be provided with suitable arrangement to lock the hatches externally/Internally as per ISPS rules.
- h) Hatches to be tested according to rules and regulations of class and/or Authorities. Shop test certificates to be submitted along with product.
- i) Hatches to be provided with rubber gasket of appropriate density as per class requirement. During hose/chalk test if seals are defective supplier to replace the same at no extra cost.
- j) The hatches are to be made in standard shipbuilding practice. All the sharp edges to be rounded off.
- k) The supply and manufacturing of hatches shall be done as per the drawing shared by Yard (Refer annexure -3). Installation location is indicated in the annexure -2 for information.
- l) The scope of supply shall be complete in all respect and shall include all equipment and services, as necessary for a proper and reliable operation of the equipment.
- m) Any item not listed above but required for satisfactory operation of the equipment has to be in scope of supply of OEM.
- n) Each set of parts shall be individually packed and protected against dampness and corrosion.
- o) Material certificates shall be provided along with the delivery.
- p) The manufacturer's test certificate shall be provided for each consignment of material.
- q) All other materials required for the hatch and fittings shall be in the supplier's scope.
- r) The final quantity shall be mentioned in the Purchase order.
- s) The Supplier needs to carry out minor modifications to the drawings shared by the Yard for ease of operation, and the revised drawings should be submitted back to the Yard for Owner's approval.
- t) Any clarification required regarding technical specifications shall be sought before



UDUPI COCHIN SHIPYARD LTD
(A COCHIN SHIPYARD COMPANY)
MALPE – 576108 INDIA

6300 T DRY CARGO VESSEL

HATCHES

Yard No.

Doc. No

Rev. No

Page No.

UY175 -UY182

PTS-175-061

1

3

submission of order. No deviation will be granted after the placement of order.

3. Supplving documents

- a) Nondestructive test results as per class rules.
- b) Raw material certificate from class.
- c) Product certificate from Class.
- d) Detailed Packing list with weight of each hatch.
- e) Class testing and certification requirements are attached in Annexure – 4 for read reference.


4. PRESERVATION

- a) Each item shall be cleaned, prepared & suitably protected for dispatch in such a way so as to prevent ingress of moisture and contamination during transportation & storage.
- b) The rust / corrosion preventive (if applicable) used shall be removable with a petroleum solvent or the same shall not be harmful to welding.

5. GUARANTEE

Manufacturer shall guarantee all the items for any defect in design, material and workmanship for a period as mentioned in the commercial terms of the inquiry.

Note: Notwithstanding any omission in this specification, all items/features required as per class rules/statutory regulations, safe working and good ship building practice shall be included in the offer by the bidder.

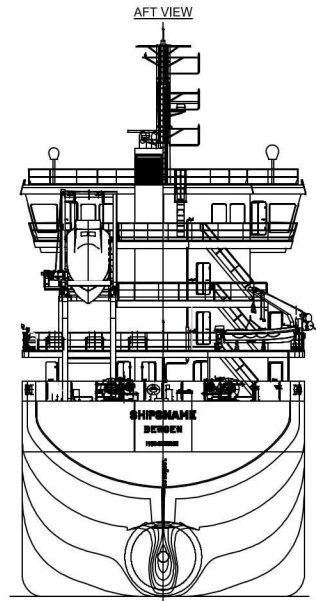
 UDUPI COCHIN SHIPYARD LTD (A COCHIN SHIPYARD COMPANY) MALPE – 576108 INDIA	6300 T DRY CARGO VESSEL		HATCHES	
	Yard No.	Doc. No	Rev. No	Page No.
	UY175 -UY182	PTS-175-061	1	4

Annexure-1

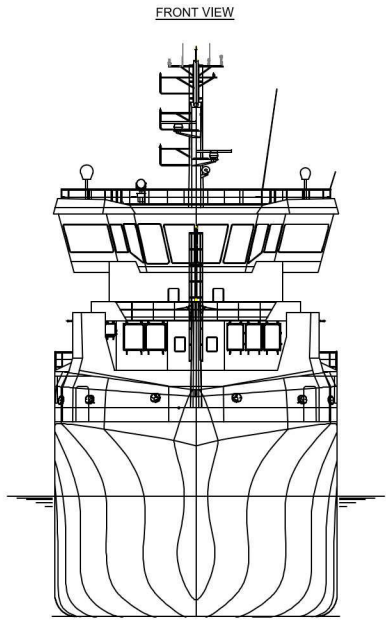
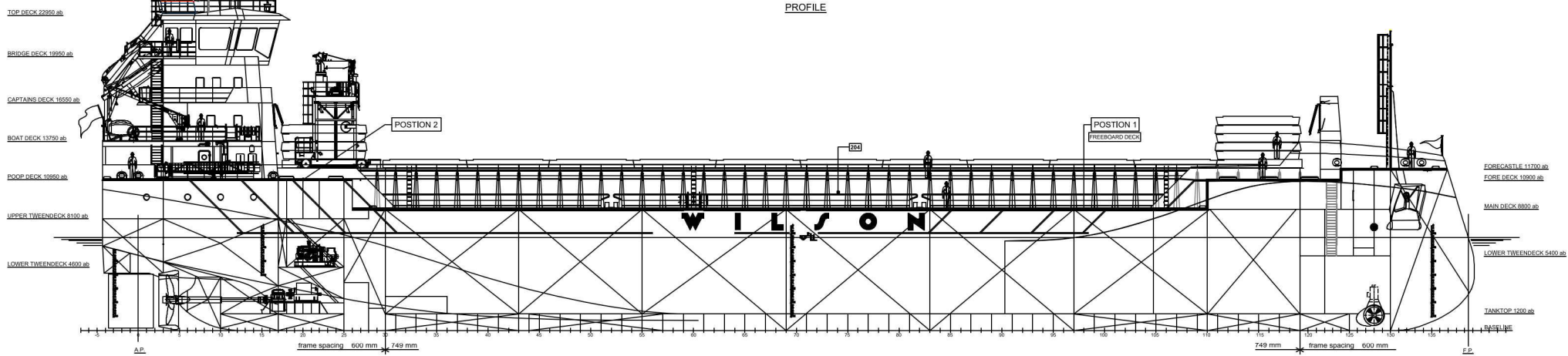
* Below mentioned quantity is for 01 nos vessel. The actual requirement is for 08 nos vessel

DECK	REF. NO.	Description	TIGHTNESS TYPE	COAMING HEIGHT	MIN. CLEARANCE OPENING	LOCK TYPE	Closing Device	Qty (Nos.)	Remarks
Poop deck 10950 Ab.	102	Steering Gear Room	Weathertight	600	800x800	ISPC Lock	2x hinges, 4x toggles	1	2 nos. Gas Spring
Poop deck 10950 Ab.	103	CO2 Room	Watertight	600	800x800	Padlock	2x hinges, 4x Butterfly wing nut	1	2 nos. Gas Spring
Hatch cover deck 11800 Ab.	104	Hold Entrance	Weathertight	600	800x800	ISPC Lock	2x hinges, 4x Butterfly wing nut	1	2 nos. Gas Spring
Hatch cover deck 11800 Ab.	105	Escape ER	Weathertight	600	800x800	ISPC Lock	2x hinges, 4x toggles	1	2 nos. Gas Spring
Fore deck 10900 Ab.	106	Escape Paint store PS	Watertight	700	800x800	ISPC Lock	2x hinges, 4x toggles	1	2 nos. Gas Spring, Safety 700 mm coaming
Fore deck 10900 Ab.	107	Rope Hatch	Watertight	600	Dia 270	-	2x hinges, 2x Butterfly wing nut	1	Dia = 400mm
Fore deck 10900 Ab.	108	Lashing Store SB	Watertight	700	1280x1170	Padlock	3 hinges, 5 butterfly nuts	1	3 nos. Gas Spring, Safety 700 mm coaming
Main deck 8800 Ab.	112	Escape Forecastle Store PS	Watertight	-	700x700	-	2x hinges, 4x toggles	1	Wall type
Upper tween deck 8100 Ab.	202	Bunker station SB	Weathertight	600	547x820	Padlock	2x hinges, 4x Butterfly wing nut	1	2 nos. Gas Spring
Upper tween deck 8100 Ab.	203	Bunker Station PS	Weathertight	600	547x820	Padlock	2x hinges, 4x Butterfly wing nut	1	2 nos. Gas Spring
Main deck 8800 Ab. (Cargo coaming)	204	Junction box Gantry Crane	Weathertight	-	835x750		2x hinges, 4x Butterfly wing nut	1	Toggles Closing
Lower tween deck 4600 Ab.	301	Bow thruster room CL	Watertight	600	1070x1070		2x hinges, 4x handle	1	2x Gas Spring

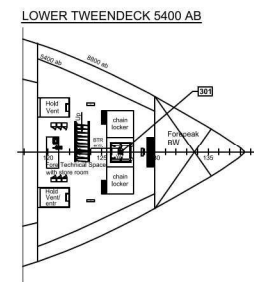
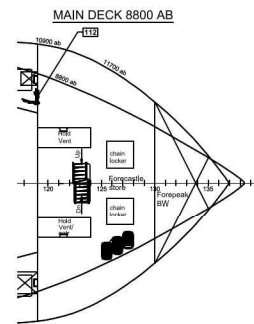
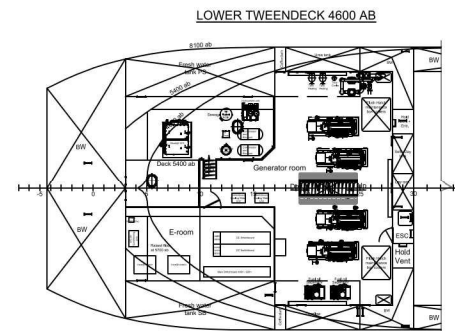
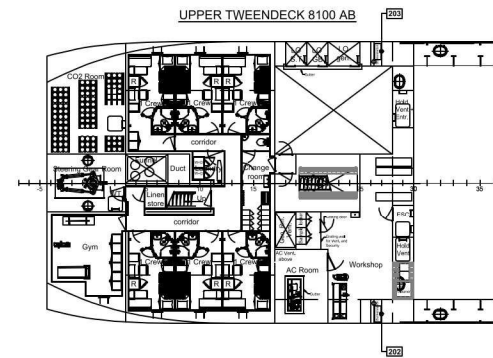
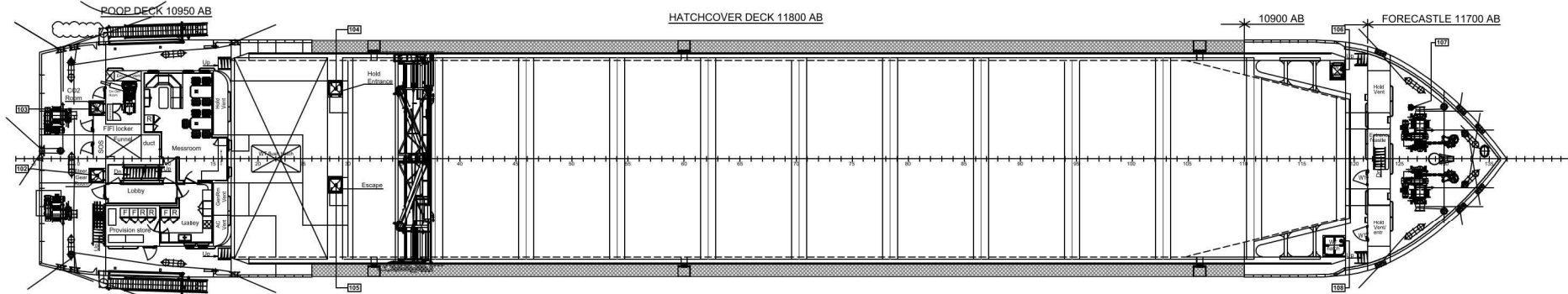
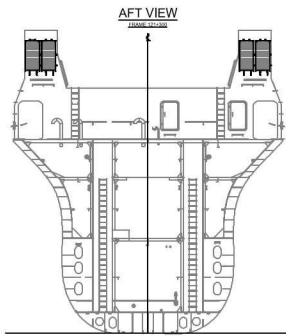
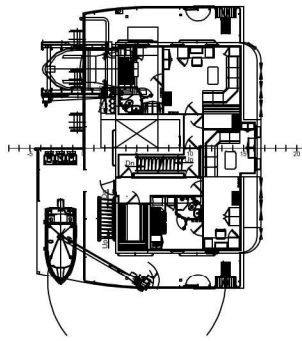
-Refer drawing enclosed for the requirement of gas spring, butterfly nut /type of closure etc. No deviations will be accepted on the same.



ANNEXURE - 02
PRELIMINARY ISSUED FOR TENDER PURPOSE ONLY



BOAT DECK 13750 AB



- NOTES:
- Hatch 108 Lashing Store, coaming 800, hoist by hatchcovercrane.
 - Clear Openings R=100 mm.
 - Coaming of all deck hatches to be with rounded corners.
 - * To be executed as weathertight

- REFERENCE DRAWINGS:
- UY175-1001-General Arrangement
 - UY175-2031-Construction plan aft ship
 - UY175-2032-Construction plan mid ship
 - UY175-2033-Construction plan fore ship
 - UY175-2034-Construction plan superstructure

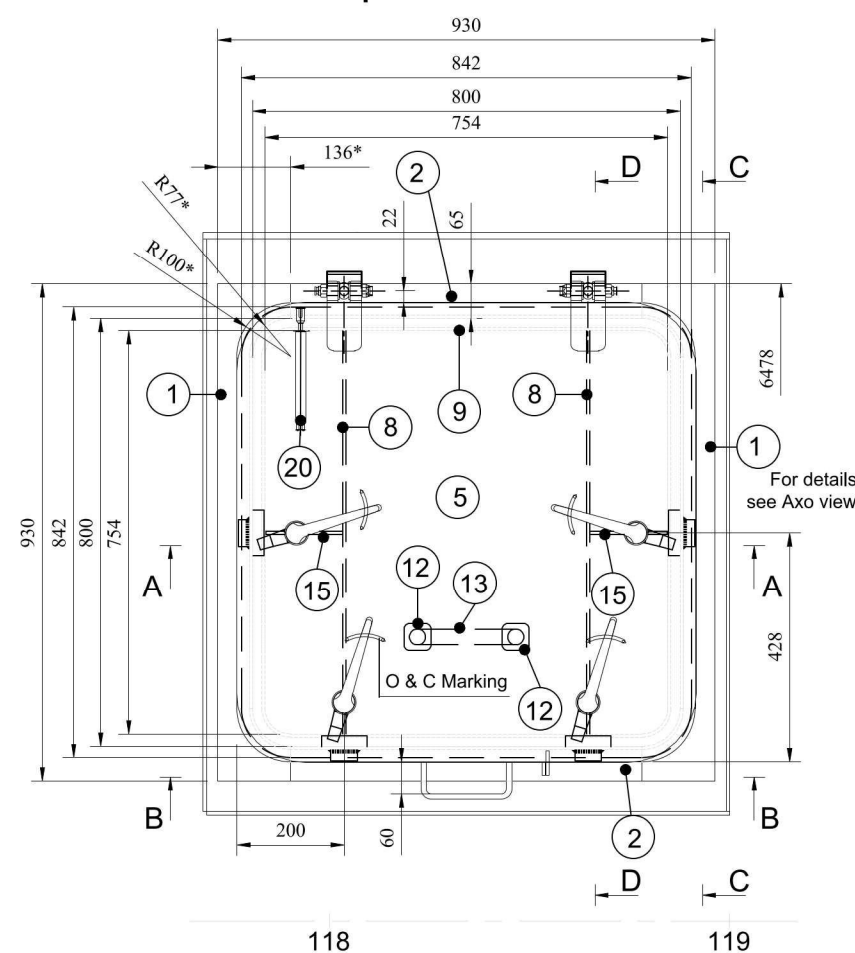
MAIN PARTICULARS - CIP8300	
Length over all	abt. 99.99 m
Length between perpendiculars	abt. 96.93 m
Breadth moulded	15.85 m
Depth moulded to Main Deck	8.80 m
Draught summer	abt. 8.75 m
Deadweight summer	abt. 6300 t
Draught design	abt. 6.50 m
Deadweight design	abt. 5970 t
Design speed	10 kn
Complement	9 pers
Cargo Hold volume (317,055 cbft)	abt. 8979 m³
Tankcapacities:	
Fuel Oil	abt. 215 m³
Ballast Water	abt. 2540 m³
Portable Water	abt. 80 m³

CLASSIFICATION:
DNV
+1A Multi-purpose dry cargo ship
Strengthened(B 15mm)
DG(B), DG(P), DBC
E0, LCS
ER(SCR, TierII), SBC(1)
BWM(T)
BIS
TMON

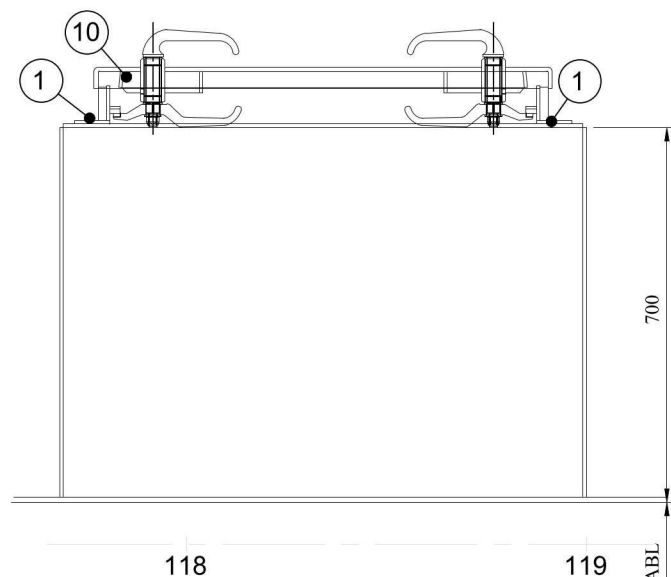
STEEL HATCHES poop deck 10950 Ab., hatchcoverdeck 11800 Ab., fore deck 10900 Ab., forecastle 11700 Ab.										
No.	Description	Type	Coaming H	Clear Opening	Lock	X	Y (SB+)	Closing Device	Remarks	Drawing Number
102	Steering Gear Room	Weatherlight	600	800x800	ISPC Lock	1251	1117	2x hinges, 4x wedge	Gaspring/Cleat Closing	
103	CO2 Room	Watertight	600	800x800	Padlock	1066	-3278	2x hinges, 4x toggle	Gaspring	
104	Hold Entrance	Weatherlight	600	800x800	ISPC Lock	17164	-4706	2x hinges, 4x toggle	Gaspring/Toggles (butterfly nuts) Closing	
105	Escape ER	Weatherlight	600	800x800	ISPC Lock	17164	1755	2x hinges, 4x wedge	Gaspring/Cleat Closing	
106	Escape Paint store PS	Watertight	700	800x800	ISPC Lock	84125	-5829	2x hinges, 4x wedge	Gaspring, Safety 700 mm coaming	
107	Rope Hatch	Watertight	600	9270		89050	-3425	1x hinges, 2x toggle	Diameter = 400mm.	8142-3025-006
108	Lashing Store SB	Watertight	700	1280x1170	Padlock	83920	5831	8x Toggles	Gaspring, Safety 700 mm coaming	
112	Escape Forecastle Store PS	Watertight		700x700		84661	-4835	2x hinges, 4x wedge	2x Gaspring, Wall type, bridge indication	
STEEL HATCHES upper tweeneck 8100 Ab. & main deck 8800 Ab.										
202	Bunker station SB	Weatherlight	600	547x820	Padlock	15988	7379	2x hinges, 4x toggle	Toggles Closing	
203	Bunker station PS	Weatherlight	600	547x820	Padlock	15988	-7379	2x hinges, 4x toggle	Toggles Closing	
204	Junction box gantry crane	Weatherlight	---	835x750		51000	6575	2x hinges, 4x toggle		
STEEL HATCHES lower tweeneck 4600 Ab.										
301	Bowthruster room CL	Watertight	600	1070x1070		89343	0	2x hinges, 4x handle	2x Gaspring	8142-2035-011

03	19-06-2025	APS	GP	Update due client, DNV comments
02	13-03-2025	APS	GP	Update due changes in GA
01	20-02-2025	APS	GP	Update due changes in GA
REV	DATE	MADE BY	APPROVED BY	DESCRIPTION
COPYRIGHT CONOSHIP INTERNATIONAL B.V. 2009. All rights reserved. This document or any part thereof may not be made public or disclosed, copied or otherwise reproduced or used in any form or by any means, including, but not limited to, electronic, mechanical, photocopying, recording, or by any information storage and retrieval system, without prior written consent of Conoship International B.V. P.O.Box 6029 - GROWINGEN - THE NETHERLANDS				
DRAWING NO. UY175-3142				
DESCRIPTION Arrangement small hatches and ventilation openings				
SCALE	1:150	SIZE	A0	YARD NO.
DRAWN BY:	JGM / APS	DATE:	23-08-2024	APPROVED BY:
				GP
				19-12-2024
				1-1

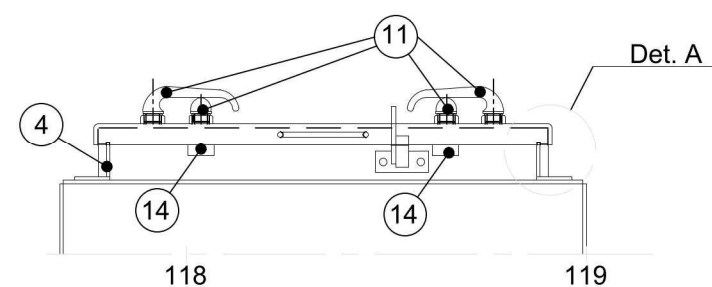
Top view hatch



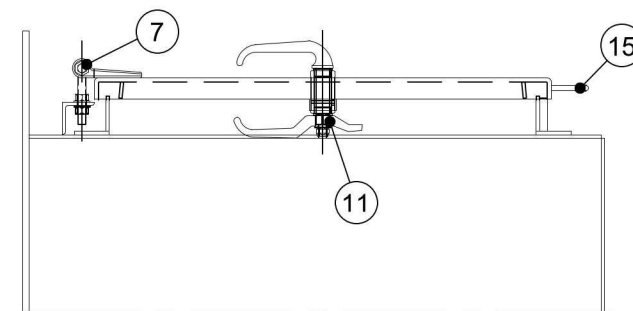
View A-A



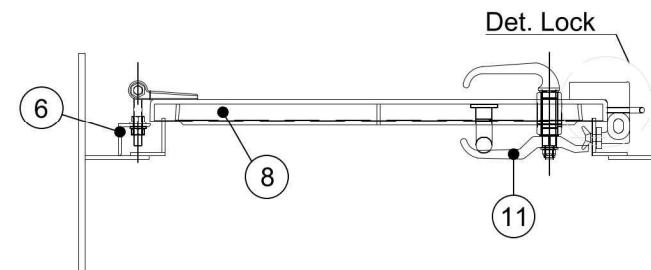
View B-B



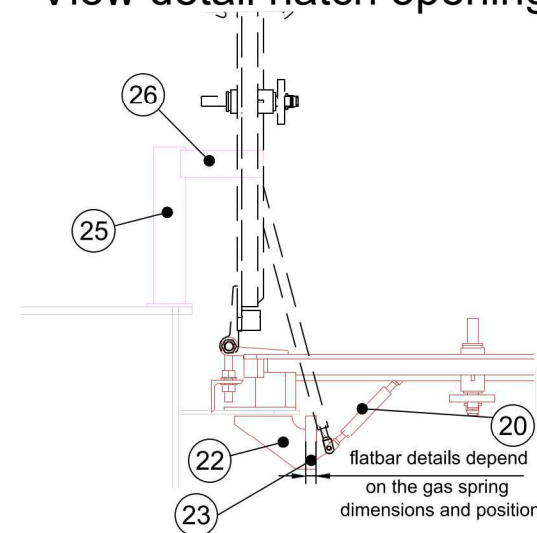
View C-C



View D-D

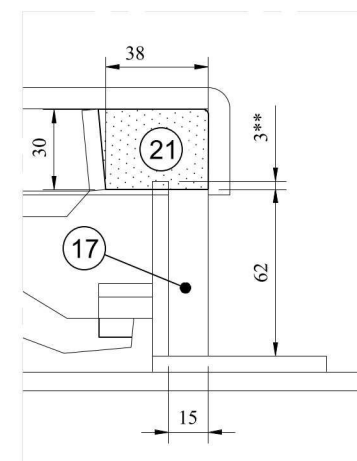


View detail hatch opening



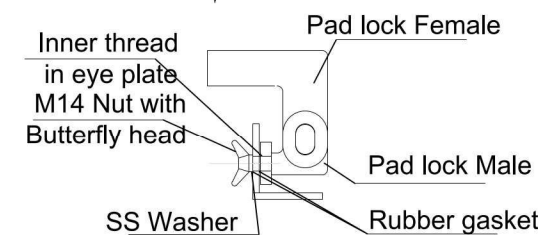
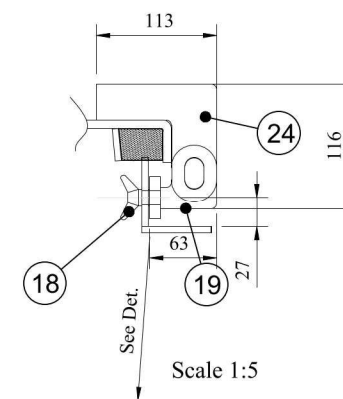
Det. A

Scale 1:2



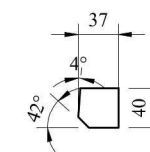
Det. Lock

Scale 1:5



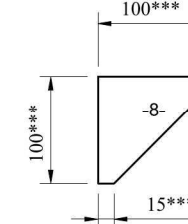
Pos. 10

Scale 1:5

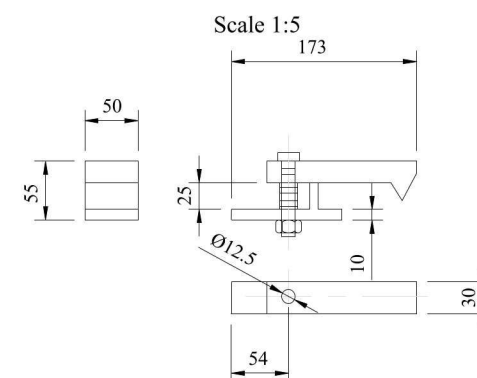


Pos. 22

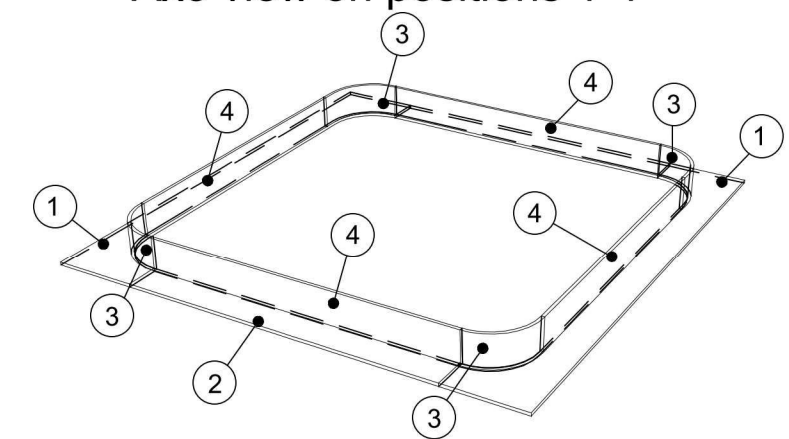
Scale 1:5



Pos. 26-Autolocking device pin assembly



Axo view on positions 1-4



Bill of material 8142-3029-001
Hatch paint store PS

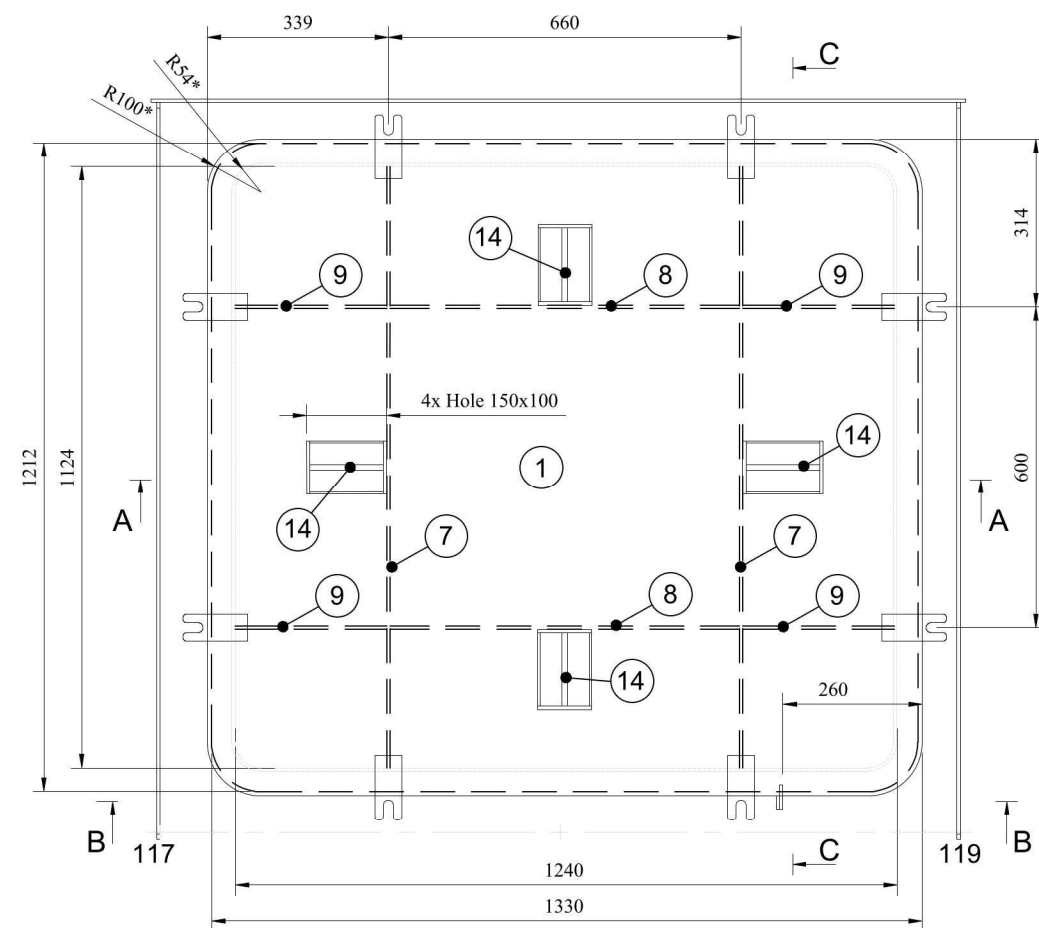
26	1 Autolocking device pin	
25	1 Door snapper	
24	1 Pad lock female	L=113
23	1 Flatbar	Dimensions depend on gas spring
22	1 Flatbar 100x8	L=100
21	1 Rubber 40x30	L=3500
20	1 Gas spring	
19	1 Pad lock male	L=63
18	2 Nut with butterfly head, with SS washer and rubber gasket	M14
17	2 Flatbar 30x6	L=62
16	2 Flatbar 40x6	L=65
15	1 Round bar Ø 10	L=250
14	4 Square bar 20x20	L=50
13	1 Pipe Ø 33,7x3,25	L=350
12	2 Flatbar 50x6	L=50
11	4 Toggle set	M16
10	4 Flatbar 40x6	L=37
9	1 Flatbar 30x6	L=3100
8	2 Flatbar 40x6	L=800
7	2 Hinge	M16
6	2 Angle bar 60x60x5	L=65
5	1 Plate 940x8	L=940
4	4 Plate 65x6	L=658
3	4 Plate 65x6	L=125
2	2 Plate 65x6	L=658
1	2 Plate 930x6	L=136
No. Pieces	Description	Dimensions

Notes:

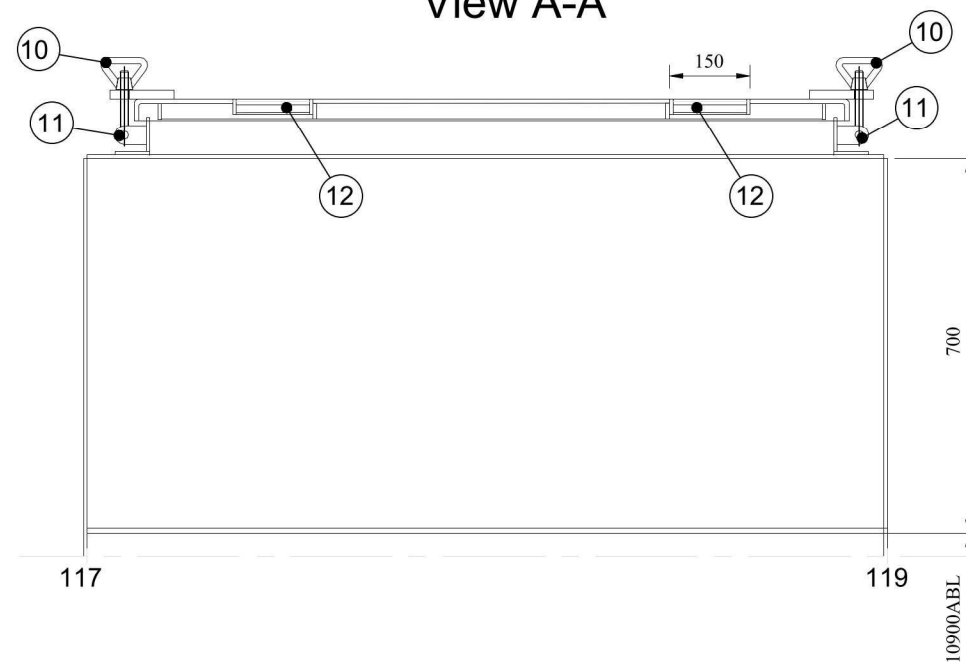
- The final dimensions (*) to be determined by the Yard after determined of the bent radius of Pos. 21 - Rubber;
- (**) - Compression rubber has to be max 5mm;
- The type and details for components Pos. 7, 11, 20, 22, 23, 24, 25, 26 to be determined by the Yard;
- The type, dimensions and mounting position of the gas spring (Pos. 20) and the components connected to it to be determined by the Yard;
- The final dimensions (***) of Pos. 22 to be determined on board by the Yard after the position and mounting of the gas spring has been decided;
- Reference drawing: UY175-3142-Rev01-Arrangement small hatches and ventilation openings.dwg;
- For position see Outfitting drawing.

01	27-06-2025	YM	JM	General Updated acc. Yard comments
REV	DATE	MADE BY	APPROVED BY	DESCRIPTION
COPYRIGHT CONOSHIP INTERNATIONAL B.V. 2009. All rights reserved. This document or any part thereof may not be made public or disclosed, copied or otherwise reproduced or used in any form or by any means, including, but not limited to, use hereof for the design and manufacturing of identical, similar or derived designs, nor identical, similar or derived documents and specifications, without prior written consent of Conoship International B.V. P.O.Box 6029 - GRONINGEN - THE NETHERLANDS				
DRAWING NO. 8142-3029-001				
DESCRIPTION Hatch paint store PS				
SCALE 1:10	SIZE: A2	YARD NO. UY175	VERSION: 01	SHEET: 1-1
DRAWN BY: YM	DATE: 03-03-25	APPROVED BY: JM	DATE: 28-02-2025	

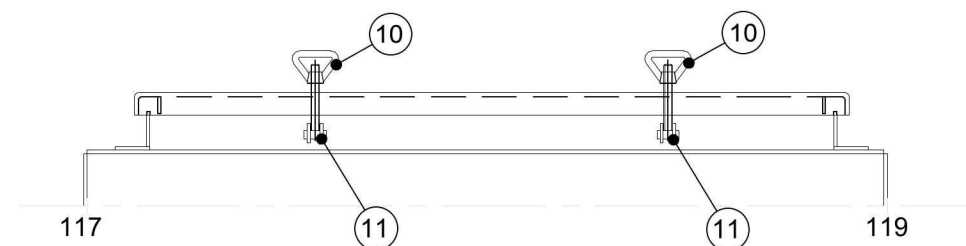
Top view hatch



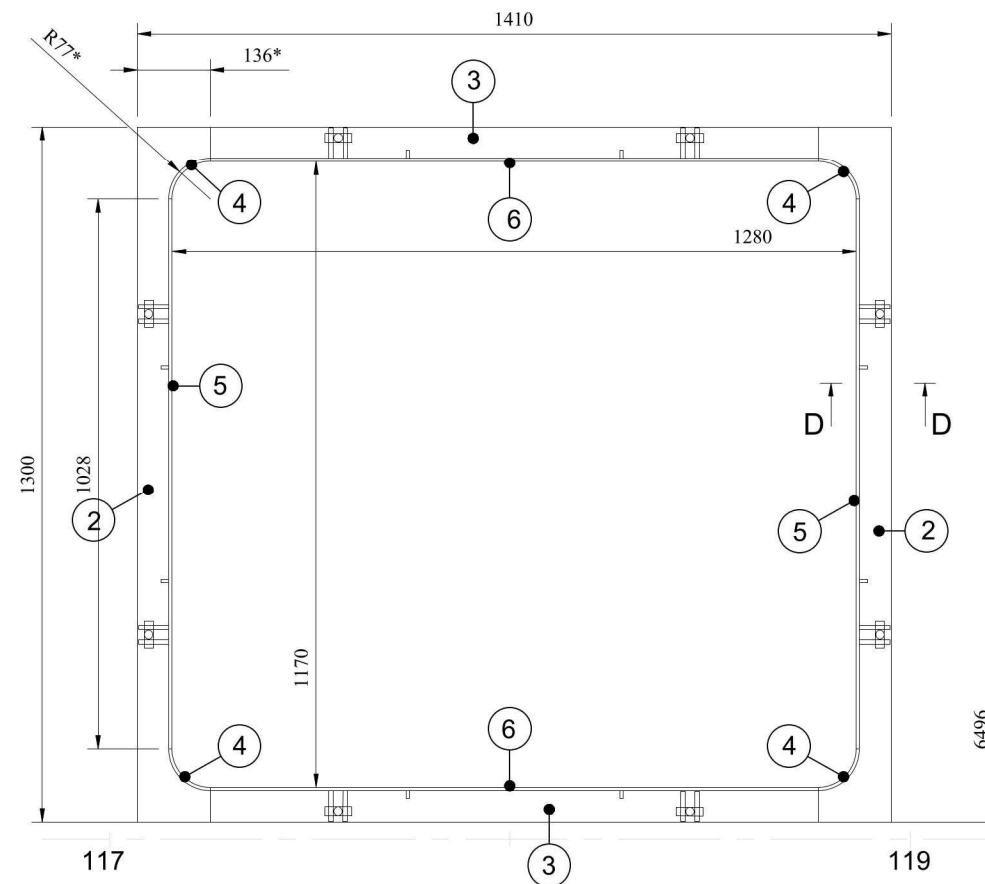
View A-A



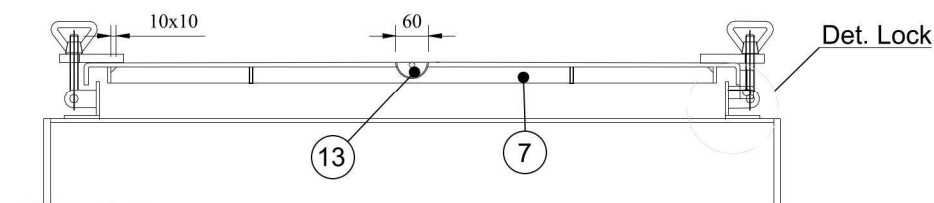
View B-B



Top view hatch coaming

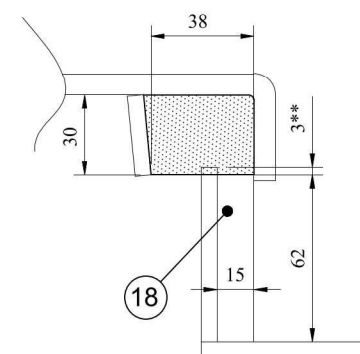


View C-C



View D-D

Scale 1:2

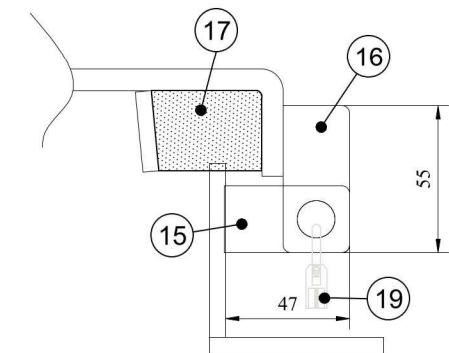


Notes:

- The final dimensions (*) to be determined by the Yard after determined of the bent radius of Pos. 17 - Rubber;
- (**) - Compression rubber has to be max 5mm;
- The type and details for components Pos. 10, 11, 19 to be determined by the Yard;
- Reference drawing: UY175-3142-Rev01-Arrangement small hatches and ventilation openings.dwg;
- For position see Outfitting drawing.

Det. Lock

Scale 1:2



Bill of material 8142-3027-001

Hatch paint store PS

19	1	Padlock	
18	4	Flatbar 30x6	L=62
17	1	Rubber 40x30	L=5100
16	1	Flatbar 25x6	L=55
15	1	Flatbar 25x6	L=47
14	4	Round bar Ø 10	L=150
13	8	Flatbar 30x6	L=60
12	1	Pipe Ø 60,3x3,9	L=300
11	8	Weld-on set	M16
10	8	Butterfly nut	M16
9	4	Flatbar 40x6	L=284
8	2	Flatbar 40x6	L=660
7	2	Flatbar 40x6	L=1130
6	2	Plate 65x6	L=1140
5	2	Plate 65x6	L=1030
4	4	Plate 65x6	L=120
3	2	Plate 65x6	L=1140
2	2	Plate 1300x6	L=140
1	1	Plate 1310x6	L=1420
No. Pieces		Description	Dimensions

CONOSHIP
INTERNATIONAL

COPYRIGHT CONOSHIP INTERNATIONAL B.V. 2009.
All rights reserved. This document or any part thereof may not be made public or disclosed, copied or otherwise reproduced or used in any form or by any means, including, but not limited to, use hereof for the design and manufacturing of identical, similar or derived designs, nor identical, similar or derived documents and specifications, without prior written consent of Conoship International B.V.
P.O.Box 6029 - GRONINGEN - THE NETHERLANDS

DRAWING NO.

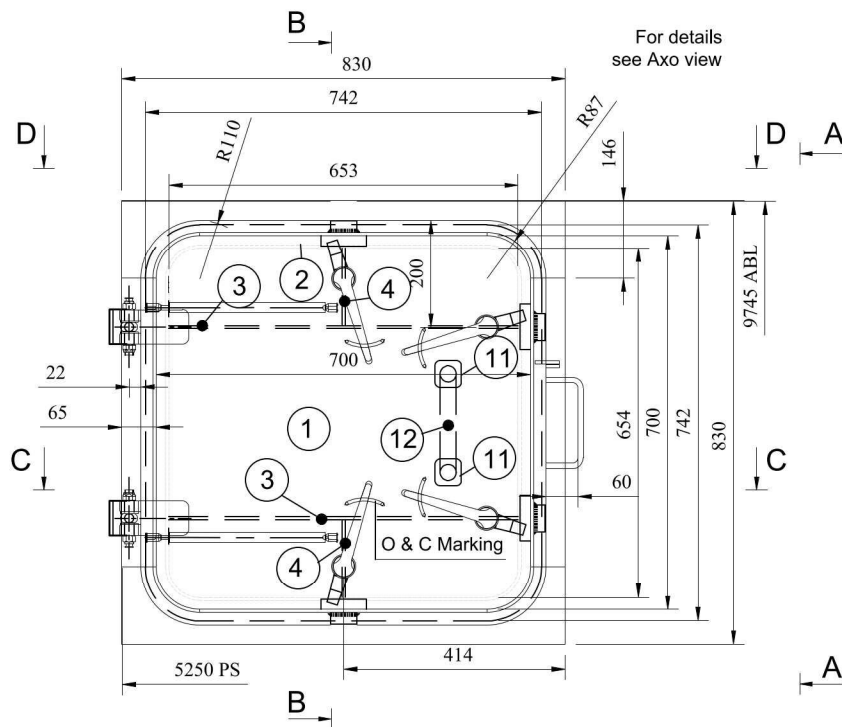
8142-3027-001

DESCRIPTION

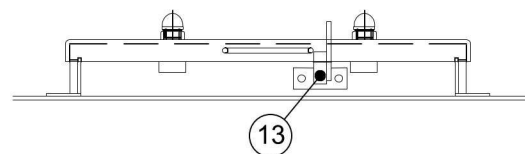
Hatch lashing store SB

SCALE	SIZE:	YARD NO.	VERSION:	SHEET:
1:10	A2	UY175	00	1-1
DRAWN BY:	DATE:	APPROVED BY:	DATE:	
YM	28-02-2025	JM	28-02-2025	

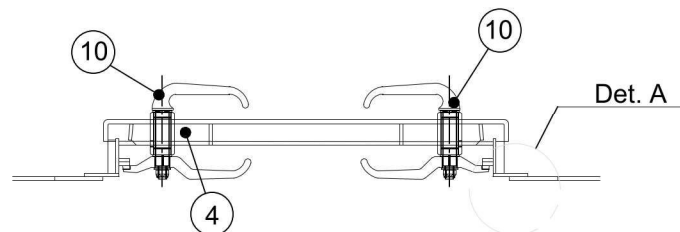
Axo view on positions 5-7



View A-A

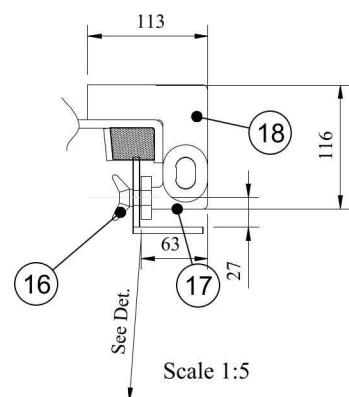


View B-B

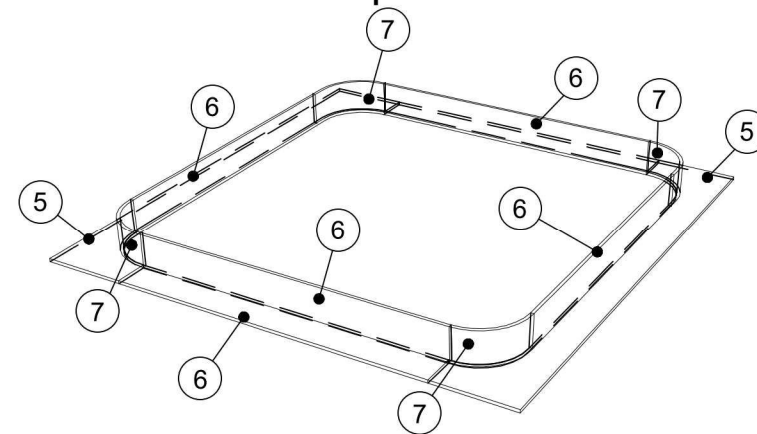
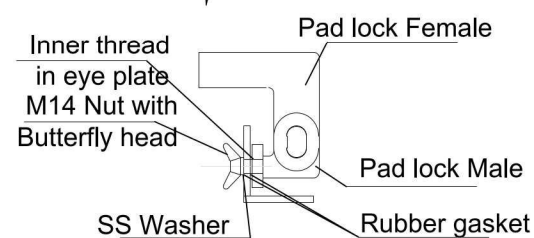


Det. Lock

Scale 1:5

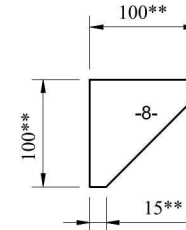


Scale 1:5

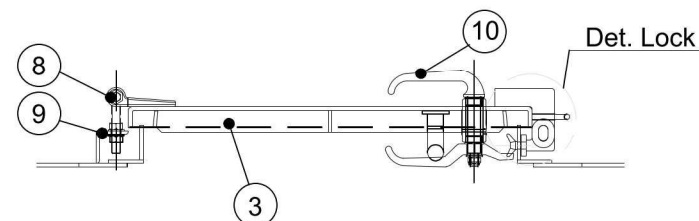


Pos. 21

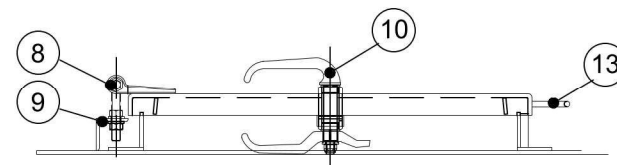
Scale 1:5



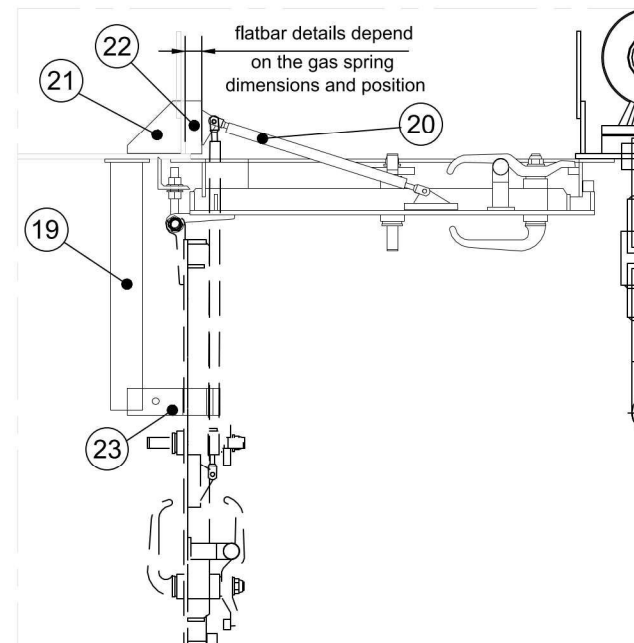
View C-C



View D-D

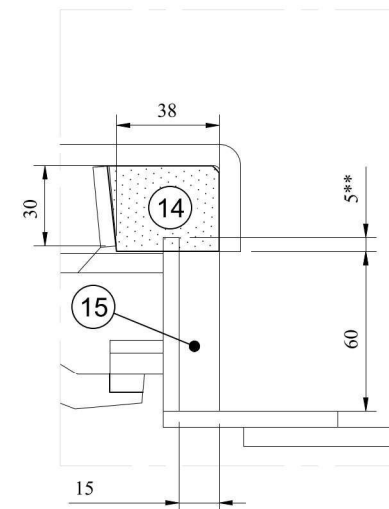


Top view detail hatch opening



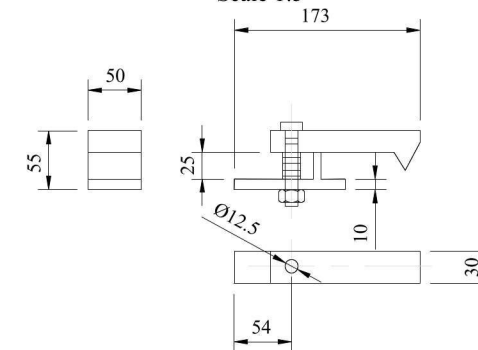
Det. A

Scale 1:2



Pos. 23-Autolocking device
pin assembly

Scale 1:5



Bill of material 8142-3029-002
Hatch escape Forecastle Store PS

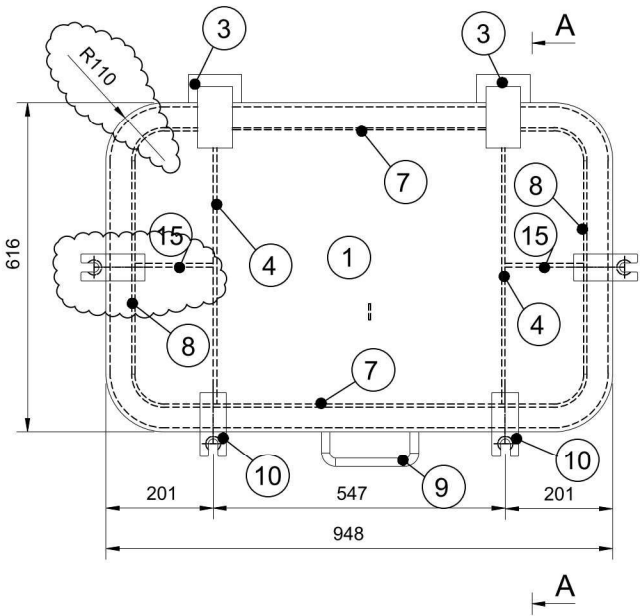
23	1	Autolocking device pin	
22	2	Flatbar	Dimensions depend on gas spring
21	2	Flatbar 100x8	L=100
20	2	Gas spring	
19	1	Door snapper	
18	1	Pad lock female	L=113
17	1	Pad lock male	L=63
16	2	Nut with butterfly head, with SS washer and rubber gasket	M14
15	2	Flatbar 30x6	L=60
14	1	Rubber 40x30	L=3000
13	1	Round bar Ø 10	L=250
12	1	Pipe Ø 33,7x3,25	L=350
11	2	Flatbar 50x6	L=50
10	4	Toggle set	M16
9	2	Angle bar 60x60x5	L=65
8	2	Hinge	M16
7	4	Plate 65x6	L=125
6	6	Plate 65x6	L=558
5	2	Plate 830x6	L=146
4	2	Flatbar 40x6	L=145
3	2	Flatbar 40x6	L=650
2	1	Flatbar 30x6	L=2600
1	1	Plate 840x8	L=840
No.	Pieces	Description	Dimensions

Notes:

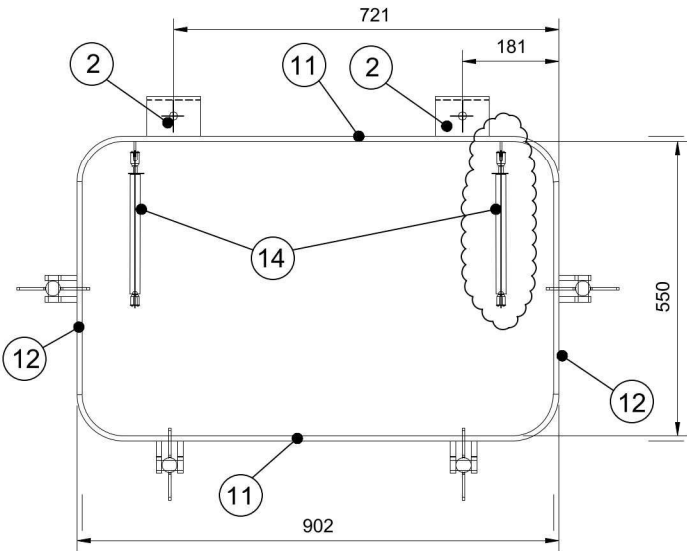
- (*) - Compression rubber has to be max 5mm;
- The type and details for components Pos. 8, 10, 16-23 to be determined by the Yard;
- The type, dimensions and mounting position of the gas spring (Pos. 20) and the components connected to it to be determined by the Yard;
- The final dimensions (**) of Pos. 22 to be determined on board by the Yard after the position and mounting of the gas spring has been decided;
- Reference drawing: UY175-3142-Rev01-Arrangement small hatches and ventilation openings.dwg;
- For position see Outfitting drawing.

01	02-07-25	YM	JM	General updated acc. Yard comments		
REV	DATE	MADE BY	APPROVED BY	DESCRIPTION		
		COPYRIGHT CONOSHIP INTERNATIONAL B.V. 2009. All rights reserved. This document or any part thereof may not be made public or disclosed, copied or otherwise reproduced or used in any form or by any means, including, but not limited to, use hereof for the design and manufacturing of identical, similar or derived designs, nor identical, similar or derived documents and specifications, without prior written consent of Conoship International B.V. P.O.Box 6029 - GRONINGEN - THE NETHERLANDS				
		DRAWING NO. 8142-3029-002				
DESCRIPTION Hatch escape Forecastle Store PS						
SCALE		SIZE:	YARD NO.	VERSION:	SHEET:	
1:10		A2	UY175	01	1-1	
DRAWN BY:		DATE:	APPROVED BY:			DATE:
YM		02-07-25	JM			02-07-25

Top view on hatch PS
Apply to SB

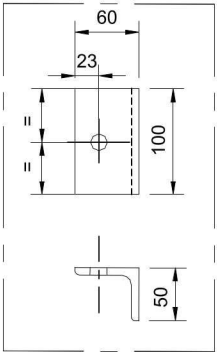


Top view hatch coaming PS
Apply to SB



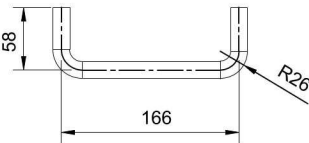
Pos. 2

Scale 1:5



Pos. 9

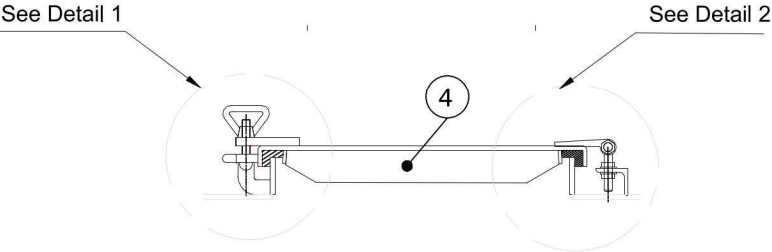
Scale 1:5



Notes:

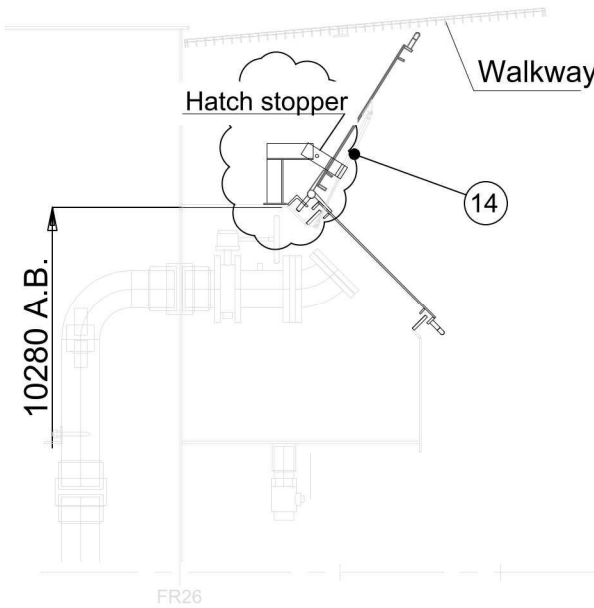
- The type and details for components Pos. 3, 5, 6, 13, 14 to be determined by the Yard;
- The type, dimensions and mounting position of the gas spring (Pos. 14) and the components connected to it to be determined by the Yard;
- (*) - Compression rubber has to be max 5mm;
- Hatch execute 2x;
- Position list components are for one hatch;
- Reference drawing UY175-3142-Rev02 -Arrangement small hatches and ventilation openings.dwg;
- For position see Outfitting drawings.

View section A-A



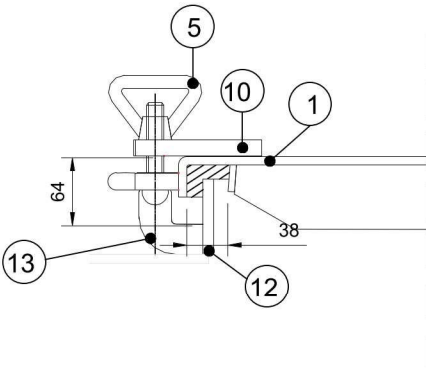
View hatch in opened position PS
Apply to SB

Scale 1:20



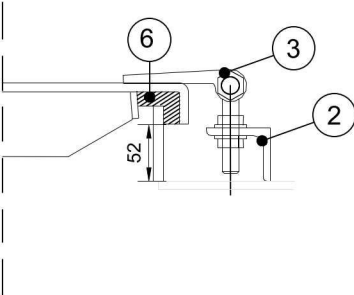
View Detail 1

Scale 1:5



View Detail 2

Scale 1:5



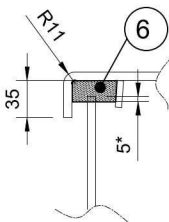
Pos. 4

Scale 1:5



Det. A

Scale 1:5

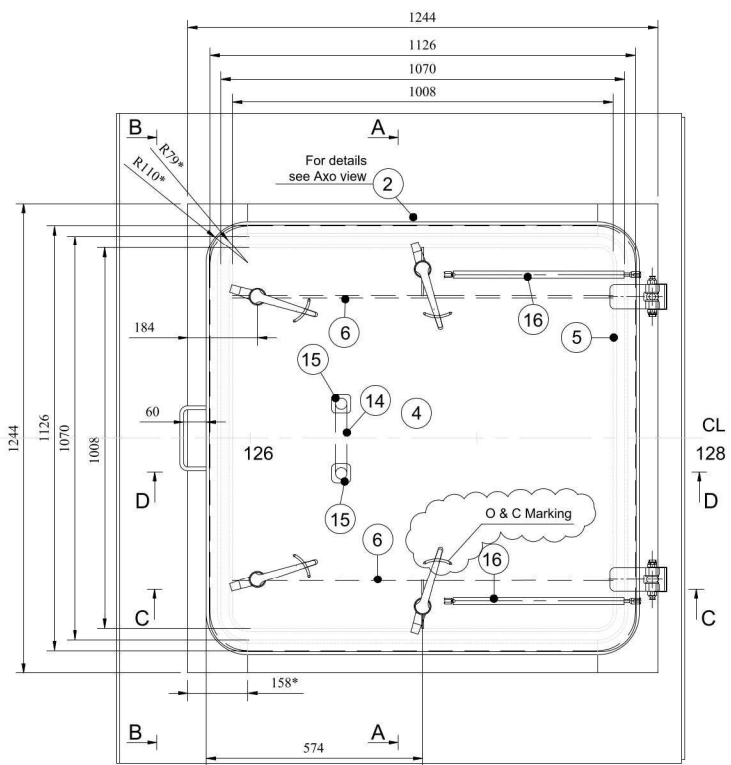


Bill of material 8142-3034-001
Hatch Bunker Station

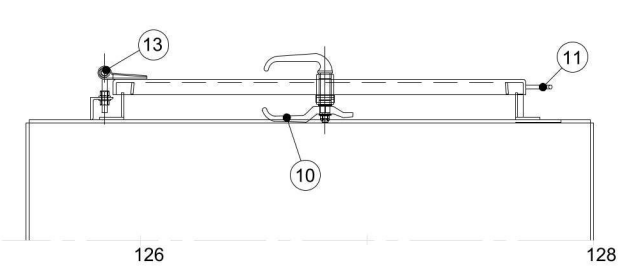
15	2	Flatbar 80x6	L=147
14	2	Gas spring	
13	4	Weld-on set	M16
12	2	Flatbar 70x10	L=397
11	2	Flatbar 70x10	L=1000
10	4	Hatch plate	M16
9	1	Pipe Ø 16x3,25	L=290
8	2	Flatbar 40x6	L=398
7	2	Flatbar 40x6	L=922
6	1	Rubber 40x30	L=±3,2m
5	4	Butterfly nut	M16
4	2	Flatbar 80x6	L=511
3	2	Hinge	M16
2	2	Angle bar 60x50x6	L=100
1	1	Plate 693x8	L=1026
No. Pieces		Description	Dimensions

01	10-07-25	YM	JM	Updated acc Yard's comments
REV	DATE	MADE BY	APPROVED BY	DESCRIPTION
COPYRIGHT CONOSHIP INTERNATIONAL B.V. 2009. All rights reserved. This document or any part thereof may not be made public or disclosed, copied or otherwise reproduced or used in any form or by any means, including, but not limited to, use hereof for the design and manufacturing of identical, similar or derived designs, nor identical, similar or derived documents and specifications, without prior written consent of Conoship International B.V. P.O.Box 6029 - GRONINGEN - THE NETHERLANDS				
DRAWING NO. 8142-3034-001				
DESCRIPTION Hatches Bunker Station 202&203				
SCALE 1:10	SIZE: A2	YARD NO. UY175	VERSION: 01	SHEET: 1-1
DRAWN BY: YM	DATE: 03-06-2025	APPROVED BY: JM	DATE: 03-06-2025	

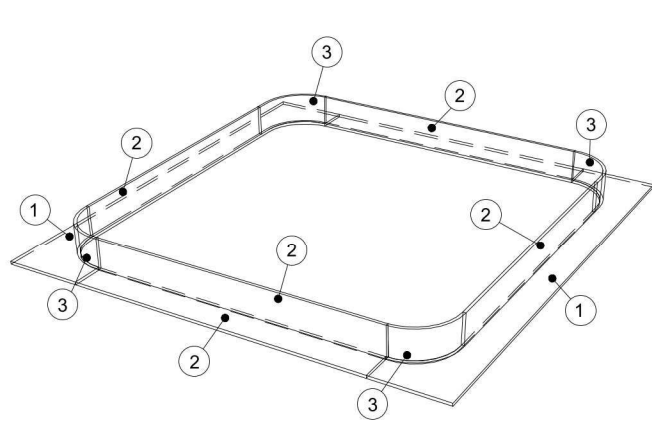
Top view hatch



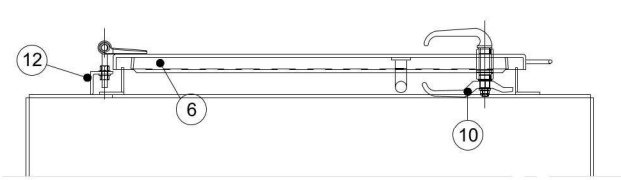
View C-C



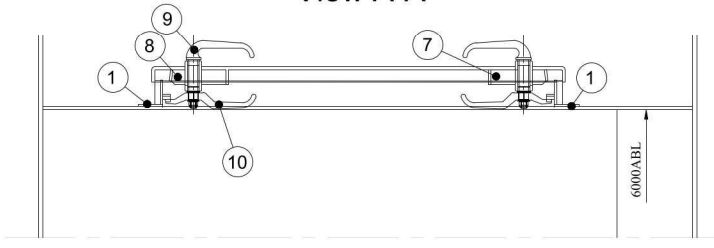
Axo view on positions 1-4



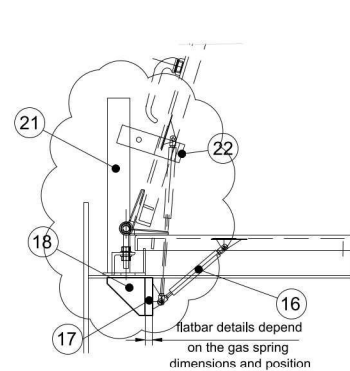
View D-D



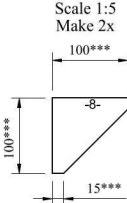
View A-A



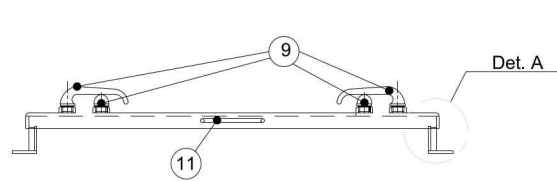
View detail hatch opening



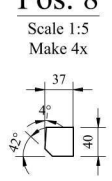
Pos. 18



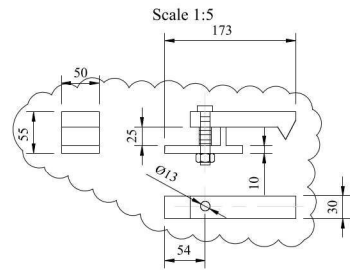
View B-B



Pos. 8

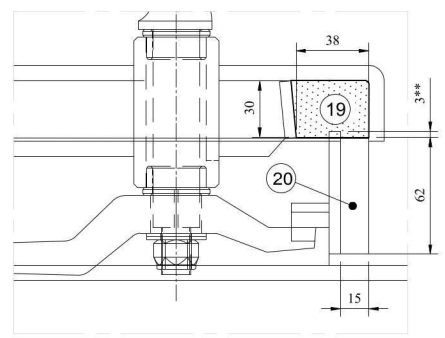


Pos. 22-Autolocking device pin assembly



Det. A

Scale 1:2



Bill of material 8142-1004-001

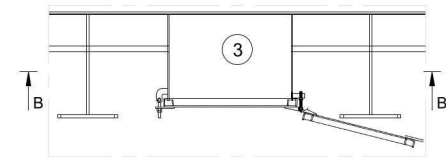
Hatch bowthruster room

No. Pieces	Description	Dimensions
22	1 Autolocking device pin	
21	1 Door snapper	
20	2 Flatbar 30x6	L=62
19	1 Rubber 40x30	L=4000
18	2 Flatbar 100x8	L=100
17	2 Flatbar	Dimensions depend on gas spring
16	2 Gas spring	
15	2 Flatbar 50x6	L=50
14	1 Pipe Ø 33,7x3,25	L=350
13	2 Hinge	M16
12	2 Angle bar 60x60x5	L=65
11	1 Round bar Ø 10	L=250
10	4 Toggle set	M16
9	4 Handle	
8	4 Flatbar 40x6	L=40
7	2 Flatbar 40x6	L=65
6	2 Flatbar 40x6	L=1000
5	1 Flatbar 30x6	L=4000
4	1 Plate 1170x8	L=1170
3	4 Plate 65x6	L=130
2	6 Plate 65x6	L=930
1	2 Plate 160x6	L=1244

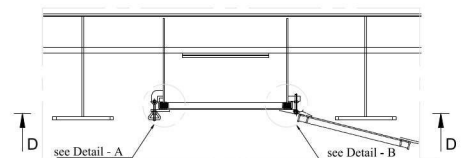
- Notes:
- The final dimensions (*) to be determined by the Yard after determined of the bent radius of Pos. 19 - Rubber;
 - (**) - Compression rubber has to be max 5mm;
 - The type and details for components Pos. 9, 10, 13, 16, 17, 18, 19 to be determined by the Yard;
 - The type, dimensions and mounting position of the gas spring (Pos. 18) and the components connected to it to be determined by the Yard;
 - The final dimensions (***) of Pos. 18 to be determined on board by the Yard after the position and mounting of the gas spring has been decided;
 - Reference drawing: UY175-3142-Rev01-Arrangement small hatches and ventilation openings.dwg;
 - For position see Outfitting drawing.

01	02-07-25	YM	JM	Updated acc. Yard comments	
REV	DATE	MADE BY	APPROVED BY	DESCRIPTION	
<div></div> <div>COPYRIGHT CONOSHIP INTERNATIONAL B.V. 2009 All rights reserved. This document or any part thereof may not be made public or disclosed, copied or otherwise reproduced or used in any form or by any means, including, but not limited to, use hereof for the design and manufacturing of identical, similar or derived designs, nor identical, similar or derived documents and specifications, without prior written consent of Conoship International B.V. P.O.Box 6029 - GRONINGEN - THE NETHERLANDS</div>					
DRAWING NO. 8142-1004-001					
DESCRIPTION Hatch bowthruster room					
SCALE	SIZE:	YARD NO.	VERSION:	SHEET:	
1:20	A1	UY175	01	1-1	
DRAWN BY:	DATE:	APPROVED BY:	DATE:		
YM	07-03-2025	JM	07-03-2025		

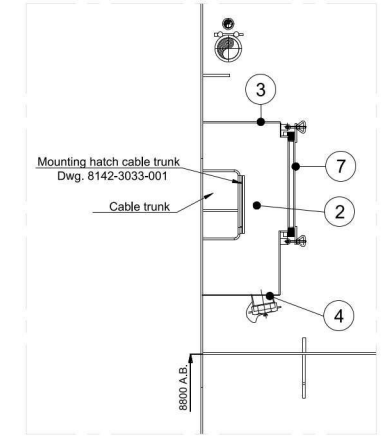
View A-A



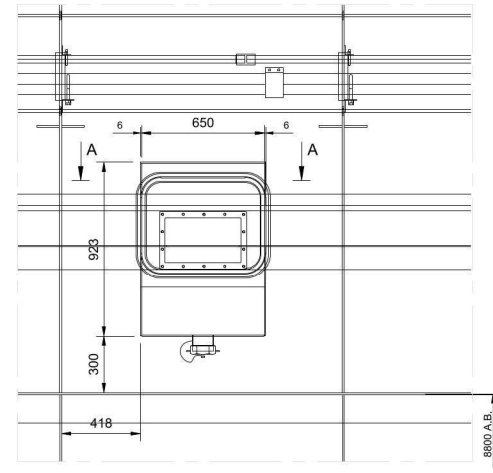
View C-C



View E-E

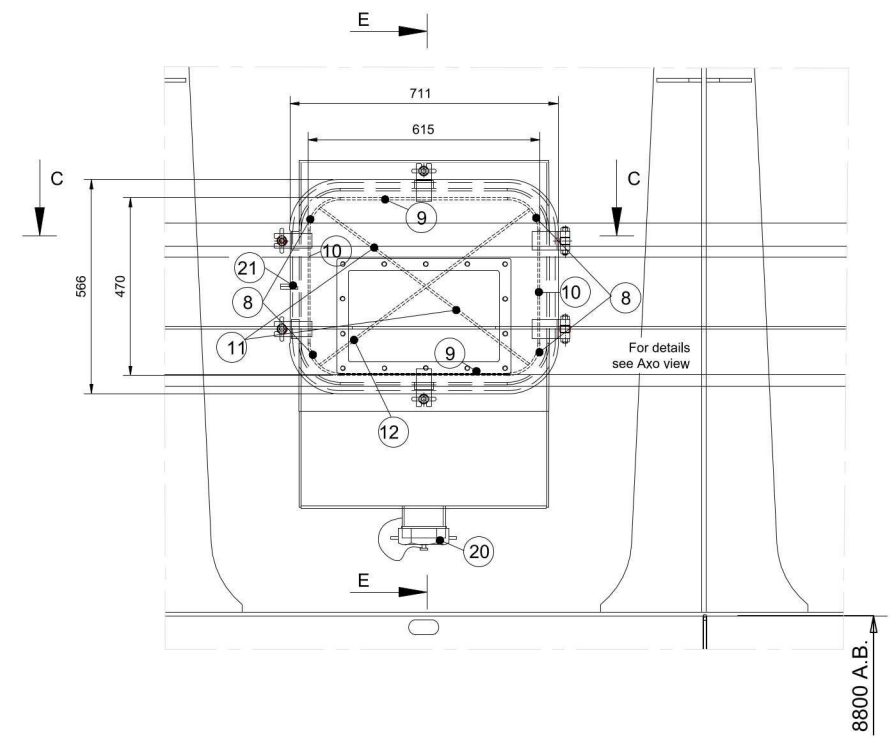


View B-B



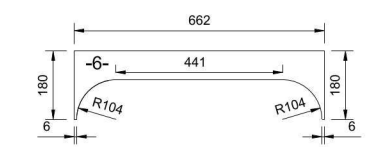
View D-D

Scale 1:15



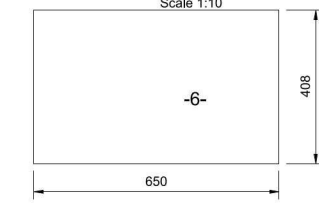
Detail Pos.1

Scale 1:10



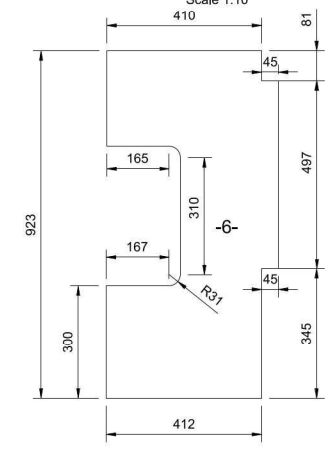
Detail Pos.3

Scale 1:10



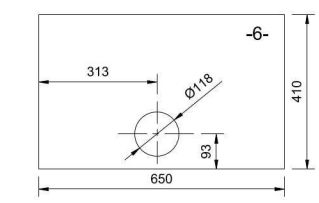
Detail Pos.2

Scale 1:10

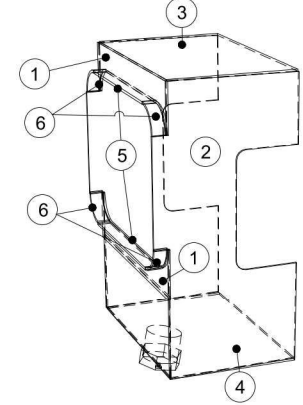


Detail Pos.4

Scale 1:10



Axo view on positions 1-6

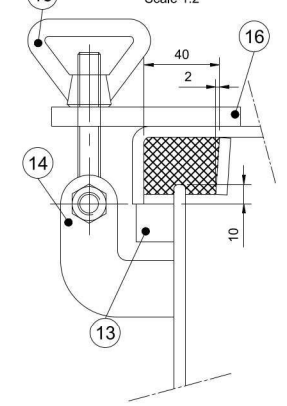


Detail Pad Lock assembly Pos.21

Scale 1:2

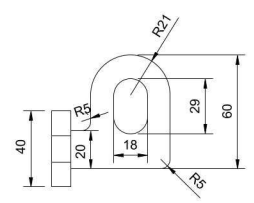
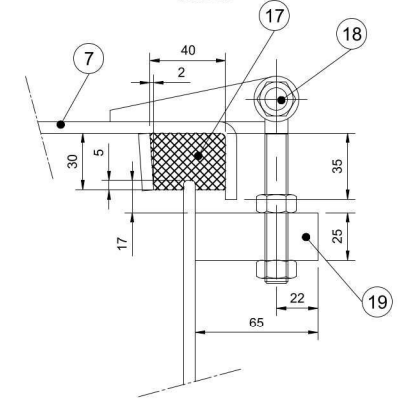
Detail A

Scale 1:2

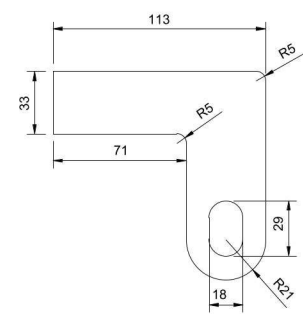


Detail B

Scale 1:2



Pad Lock Male



Pad Lock Female

Note:

- The final design of the connection box to be determined based on the specification of the hatch cover crane supplier;
- The dimension and position of hole for the pipe nipple Pos. 20 to be determined on board based on the specification from the hatch cover supplier;
- For position, see Outfitting drawing.

Reference drawings:

- 8142-3033-001-Rev00 Mounting hatch cable trunk.dwg

REV	DATE	MADE BY	APPROVED BY	DESCRIPTION
21				1 Padlock
20				1 4" Pipe nipple
19				2 Flatbar 40x25 L=650
18				2 Hinge M12
17				1 Rubber 40x30 L=3500
16				4 Hatch plate M12
15				4 Butterfly nut M12
14				4 Weld on set M12
13				4 Square bar 20x20 L=50
12				2 Flatbar 30x6 L=692
11				2 Flatbar 30x6 L=340
10				2 Flatbar 30x6 L=298
9				2 Flatbar 30x6 L=443
8				4 Flatbar 30x6 L=135
7				1 Plate 636x6 L=781
6				4 Flatbar 40x6 L=173
5				2 Flatbar 40x6 L=443
4				1 Plate 410x6 L=650
3				1 Plate 408x6 L=650
2				2 Plate 457x6 L=923
1				2 Plate 180x6 L=662
No. Pieces	Description	Dimensions		

COPYRIGHT CONOSHIP INTERNATIONAL B.V. 2009
All rights reserved. This document or any part thereof may not be made public or disclosed, copied or otherwise reproduced or used in any form or by any means, including, but not limited to, use hereof for the design and manufacturing of identical, similar or derived designs, nor identical, similar or derived documents and specifications, without prior written consent of Conoship International B.V.
P.O.Box 6029 - GRONINGEN - THE NETHERLANDS

DRAWING NO. 8142-3033-002

DESCRIPTION Connection hatch cover crane

SCALE 1:20 SIZE: A1 YARD NO. UY175 VERSION: 00 SHEET: 1-1

DRAWN BY: YM DATE: 01-07-25 APPROVED BY: JM DATE: 01-07-25

Table 1 Stability and watertight integrity

System / equipment description	DNV OS / rule reference	DNV surveillance focus
Watertight / weathertight doors and hatches	DNV-OS-C301 Ch.2 Sec.2 [9.1]	<ul style="list-style-type: none"> Pressure testing of watertight doors and hatches: <ul style="list-style-type: none"> Before installation (i.e. normally at the manufacturer), confirm that watertight doors or hatch covers are hydraulically tested with exposure to the side most prone to leakage. The test pressure shall correspond to the pressure height + 0.05 N/mm² (5 m water), and the acceptance criteria shall be: No leakage for doors or hatch covers with gaskets, maximum water leakage 1 litre per minute for doors or hatch covers with metallic sealing.
	DNV-OS-C301 Ch.2 Sec.2 [9.2]	<ul style="list-style-type: none"> Hose testing of all watertight and weathertight doors and hatch covers: <ul style="list-style-type: none"> After installation onboard, confirm watertight and weathertight doors or hatch covers are hose tested. The water pressure shall be at least 0.2 mm² (2 bar), and the nozzle shall be held at a distance of maximum 1.5 m from the door or hatch cover. No leakage shall be accepted. As an alternative to hose testing, chalk testing may be applied under special circumstances, upon acceptance by all parties involved.
	DNV-OS-C301 Ch.2 Sec.2 [9.3]	<ul style="list-style-type: none"> Function testing of watertight doors and hatch covers After installation onboard the operation, control and alarm functions for all watertight doors and hatch covers shall be tested. The following shall be verified: <ul style="list-style-type: none"> For each door, the total closing time shall not be less than 30 seconds or more than 60 seconds. It shall be possible to close all doors or hatch covers in one group simultaneously within 60 seconds from the control room. It shall be possible to open and close the doors or hatch covers three times by means of a local device and stored energy. It shall be possible for a person to pass through the doorway or hatchway and at the same time hold both handles in the "open position". It shall be possible to open the door or hatch cover locally from both sides, after being closed centrally, and the door or hatch cover shall close automatically after such opening. The door or hatch cover shall be mechanically locked in a closed position. The light and sound signals shall give warning when the door or hatch cover is closed centrally. The remote position indicator for doors or hatch covers shall function properly. The alarms for the following conditions shall function properly: <ul style="list-style-type: none"> Start of standby pump, loss of power to control, alarm and indicating system, low pressure (below lowest permissible).

General Terms and Condition

Annexure 2

SL NO	Description	Compliance by Supplier (YES/NO)
		In case of non-compliance, please provide remarks.
1	Tenderers are to carefully go through the terms and conditions and the technical specification of the items for which offers are called for. Tenderers have to adhere to above and supply full technical scope of items along with compliance of commercial conditions. UCSL have full right upon deviations, if any, including rejecting the partial scope/ complied offers.	
2	Offers are to be furnished in duplicate and should be free from overwriting. Corrections and additions, if any, must be attested. In the case of E-tender offers shall be submitted only through UCSL E- procurement portal. Incomplete/ambiguous/conditional offers are likely to be rejected.	
3	Technical checklist, if applicable and current general terms & conditions of enquiry duly filled and signed and technical specifications of items offered (refer clause 2), should be submitted along with part-1 techno-commercial bid in the case of two-bid tenders and along with the bid documents in the case of single bid. Non receipt of the document may lead to rejection of offers. In the case of E tender filling up of GTC check list in the portal itself is sufficient.	
4	Spare/Tool requirements to be confirmed, if applicable	
	i) Spare parts shall be furnished in accordance with the Class recommendations and manufacturers standard	
	ii) The same shall be included in offered costs and shall be a part of L1 evaluation.	
5	Following Certificates/documents is to be submitted for the item in the event of an order: Refer PTS-175-061-rev 01- clause no.3 Supplying Documents (page no. 3)	
	SPECIFICATIONS: -	
6	a) Manufacturer's name, their trade mark and brand, if any, should invariably be mentioned and illustrative leaflets giving technical particulars (technical details of items offered including technical literature) etc., should be attached to the offer.	
	b) Materials offered shall conform to UCSL specifications and drawings.	
	c) Samples are to be supplied free of cost in the event of requirement by UCSL. The detailed working drawing, if called for, is also to be furnished for approval before commencement of manufacture.	
7	Packing materials should be eco-friendly.	
8	Supplier should follow the statutory requirements of product offered.	
9	Products supplied shall be non-toxic and harmless to health. In case of toxic materials, Materials Safety Data Sheet may be furnished along with the material.	
	COMMISSIONING & SEATRIALS: - Service engineer assistance for 15 days(excluding travel days, Sundays) irrespective of number of engineers in 3 trips per shipset. Total 90 man-days (excluding travel days, Sundays) irrespective of number of engineers in 18 trips for all 6 ships to be included in scope and cost.	
	b) Cost considered to include all charges incurred for travel, lodging, food and local transport costs.	
	c) Additional man-day rates to be indicated separately (all inclusive of cost for boarding, lodging and local transport etc.) for extension beyond agreed man-days. Additional man-days/trips only applicable after completion of 28 man-days & 12 trips as indicated in 9a for all the vessels together.	
10	d) Whether the applicable taxes in India shall be borne by UCSL/Supplier (In the case of foreign vendors).	
	e) Income tax liability of non-resident service engineer based on his period of stay in India shall not be borne by UCSL	
	f). The non-resident seller/service provider shall provide such documents that are necessitated by the Indian income tax laws so as to enable UCSL to comply with the provisions of Indian statute and for payments of income tax in India. Following documents shall be sought by UCSL in this regard	
	(i) Certificate under 10 (F)	
	(ii) Tax residency certificate	
	(iii) The certification regarding the existence/non-existence of business connection or permanent establishment in India.	
	(The above is only an indicative list)	
11	Taxes and duties, if any, payable extra are to be indicated in the price part for single bid and in techno commercial part and price part (in the case of 2 bid tender).	
	MSEs, Startups and Make in India	
12	a) Local Suppliers (Make In India), MSME firms and Startups will be eligible for various Relaxations in pre-qualification criteria and other Benefits as per the orders promulgated by Government of India. Bidders are advised to refer the details of various Benefits and Relaxation in pre-qualification criteria as published at CSL website (www.cochinshipyard.in) under the Tenders tab for further reference.	
	Delivery Period:	
	a. Delivery time required for supplies should be indicated in the offer (including time frame for drawing preparation, class approvals, manufacture etc.) Please note, required date at UCSL are as follows:	
13	b. The supplier shall submit all the drawings for approval from UCSL within 15 days from the date of PO and UCSL has forward the drawing approval within 15 days thereafter.	

SL NO	Description	Compliance by Supplier (YES/NO)
		In case of non-compliance, please provide remarks.
	Material required date at UCSL : On Staggered Delivery Basis UY-175-by 05.02.2026, UY-176-by 21.04.2026 UY-177-by 10.07.2026, UY-178-by 08.10.2026 UY-179-by 05.02.2027, UY-180-by 21.04.2027 UY-181-by 10.07.2027, UY-182-by 08.10.2027	
14	SHIPMENT a. Supplier shall intimate UCSL the readiness of the Equipment/ Machinery/ Components and Parts prior to fourteen days of shipment.	
	b. A minimum 14 days free detention period is to be granted for clearance of the goods at Mangalore/Mumbai/Chennai seaport, as applicable for full containers.	
15	PAYMENT TERMS: a. For equipment's with commissioning	
	UCSL payment term is 80% along with 100% applicable taxes within 30 days from the date of receipt and acceptance of items at UCSL stores after inspection and balance 20% on satisfactory completion of commissioning certified by UCSL.	
	b. For general items	
	UCSL payment term is 100% within 30 days of receipt and acceptance of materials at UCSL stores after inspection.	
16	c) Payment mode shall be Electronic Clearing System (ECS)/cheque /NEFT/ /LC/CAD/TT-as mutually agreed in line with above standard payment terms. Variations from standard terms, if any, shall be appropriately loaded for tender comparison purposes for arriving the lowest bid. Bank charges (including LC charges, if any) inside India will be to UCSL account and outside India to supplier's account (In the case of import shipments). The charges for LC amendment, if any, shall be borne by the parties by whom the same is attributed/ necessitated.	
	d) Normally advance payments are not encouraged. In case, if advance payment is sought, the same can be considered for a maximum of 10% order value only. Interest at the base rate of SBI (applicable on the date of price bid opening) + 1% for the amount of advance will be charged. In addition, Bank guarantee for equivalent amount of advance to cover the period till advance payment is adjusted to be furnished. (i.e till completion of supplies or for a period as specifically agreed + 90 days). In case interest as above is not agreeable to be paid, the same will be loaded on your quoted basic prices, for tender comparison purposes for arriving the lowest bid	
	e) For deviation in Payments terms from UCSL standard terms, if any, aforesaid interest will be loaded on quoted item prices, for tender comparison purposes for arriving lowest bid.	
	f) Part payment shall be considered only if specifically agreed against partial supplies.	
17	Security Deposit/ Warrantee Bank Guarantee: a.i) The successful bidder shall remit a security deposit of 3% of the total order value (excluding taxes, duties) in the form of demand draft drawn in favor of Udupi Cochin Shipyard Ltd towards the satisfactory performance of the contract, if an order is placed on them. Alternatively, a Bank Guarantee equivalent to above % of the total order value (excluding taxes, duties) as per UCSL format from an International Bank as per approved list of banks available in CSL website (for overseas supplier) & Scheduled Indian bank for Indian supplier is to be submitted, if an order is placed towards satisfactory performance of the contract.	
	a.ii) The supplier shall also agree for 3% of total order value (excluding taxes and duties) as Bank guarantee towards the Guarantee clause	
	a.iii) The Bank Guarantee /DD as above should be initially valid till 90 days after completion of supplies in terms of SD and later revalidated (within the validity of initial BG) to cover the guarantee period mutually agreed plus 90 days. However, in the case of items where WBG is not applicable (as in 15.a.ii), the SD shall be valid for item delivery at yard plus 90 days. Fixed Deposit Receipt (for equivalent amount of Security Deposit/WBG required as per tender) in lieu of bank guarantee is also acceptable. Fixed Deposit Receipt shall be in the name of supplier with lien marked in favor of Udupi Cochin Shipyard Limited, Kochi.	
	a.iv) The above SD/WBG is required or applicable only when the total order value (excluding taxes and duties) is Rs.20lakhs and above (or equivalent foreign currency). In case supplier have quoted Rs.20 lakhs and above in tender and indicated that BG as not applicable in the check list, the clause 15b shall be considered for further process.	
	b) If the bidder is not agreeable to submission of SD/ warrantee bank guarantee as per UCSL general terms and conditions of enquiry, UCSL reserves the right to reject the offer at our discretion or 3% of total order value (excluding taxes and duties) will be added to the quoted price for tender comparison/ evaluation purpose on case to case basis for arriving the lowest bid.	
	However, in cases where total quoted value is less than 20 lakhs, (ie split order etc) and the order value of entire tendered items is more than Rs 20.0 lakhs, the aforesaid loading will be applied on individual items in following cases: - The bidder has not quoted for entire tendered quantity - UCSL has technically / commercially rejected a few items in the tender	
	c) SD to be submitted within 2 weeks of receipt of order from yard.	
	d) Format of bank guarantee along with enquiry to be agreed, in general	
	e) Mode of receipt of bank guarantee is strictly through SWIFT mode from supplier bank to UCSL designated bank (for overseas bidders)	

SL NO	Description	Compliance by Supplier (YES/NO)
		In case of non-compliance, please provide remarks.
18	Risk Purchase: If the supplier fails to supply the items ordered in good quality as per contract specification and fails to deliver within the delivery date or violate any of the terms and conditions of the purchase order, UCSL shall have the following rights.	
	a. To cancel the order partially or fully with 15 days, notice and to forfeit the security deposit, if any.	
	b. To impose tender holiday for the vendor for an appropriate period as decided by UCSL	
	c. To initiate alternate procurement action at the risk and cost of the supplier. This Risk Purchase clause is applicable only in the case of total order/ contract value (excluding taxes and duties) is Rs.20 lakhs and above (or equivalent foreign currency). Cases of value less than 20 lakhs will be addressed by serving appropriate caution/ warning notice to the firm.	
19	Liquidated Damage:	
	In case of delay in supply of ordered materials beyond the stipulated delivery period, which is not attributable to UCSL, supplier is to pay Liquidated Damages (and not by way of penalty) a sum equivalent to ¼% (half percent) per week or part of the week of the total basic price in case of Machinery/Equipment and of basic price of materials delayed in all other cases, subject to a maximum of 10% of the total basic price of undelivered material/10% of total basic price of machinery/equipment (Total basic price is the order value excluding freight, taxes, other charges etc.). Further, GST will be applicable upon LD and the same also will be deducted along with LD. However, LD applicability is without prejudice to UCSL right to terminate contract for delayed delivery or other actions as per clause 16.	
20	Guarantee	
	a) The Items supplied shall be guaranteed for rated performance and against damage or failure due to faulty design, defective materials and bad workmanship for a period of 18 months from the date of delivery of the ship to Owners OR 30 months from the date of delivery of items to Yard, whichever is earlier. Should such damage/failure occurred within the Guarantee period, the Supplier should immediately rectify the failure by repair/replacement of any such part found to be under performing/ defective, at his own expenses.	
	b) Further to equipment guarantee, replaced/repared items shall be guaranteed for 12 months from date of repair/replacement.	
21	Preservation & Packing	
	1.The preservation and packaging of the equipment to ensure that there is no damage and deterioration during transit and the period when the item is in storage in storhouse. 2. Duration of validity of preservation to be indicated. 3. Methodology for receipt inspection without affecting preservation (for main equipment and loose supplied items) is to be indicated by the OEM including any requirement for re-preservation 4. The procedure for re-preservation to be supplied by the firm. 5. Requirement of special provisions for storage and transportation to be specifically indicated. 6. Any consumables required for preservation/ re-preservation beyond a stipulated time period to be clearly indicated by OEM.	
22	Jurisdiction:	
	All questions, disputes or difference arising under, out of, or in connection with contracts shall be subject to the exclusive jurisdiction of the Courts at Bangalore, India. Alternate dispute resolution mechanism can also be considered.	
23	Force Majeure condition:	
	Should failure in performance of the contract or part thereof arise from war insurrection, restrain imposed by Government, Act of Legislature or other Statutory Authority or illegal strike, riot, legal lock-out, flood, fire, explosion, act of God or any inevitable or unforeseen event beyond human control which may be construed as reasonable ground for an extension of time, UCSL may allow such additional time as is mutually agreed, to be justified by the circumstances of the case. The occurrence/cessation of force majeure situation is to be informed with documentary evidence within 15 days from the date of occurrence/ cessation.	
24	Indian Agent:	
	a) Udupi Cochin Shipyard Ltd prefers to deal directly with the supplier. However, if the supplier appoints an Indian Agent to deal with Udupi Cochin Shipyard Ltd., the Agency commission payable by the supplier to such an agency shall be intimated.	
	b) If manufacturers affect the supply through Agents only, authorization in writing from manufacturers in favor of the Agent for supply to UCSL shall be furnished.	
	c) In case where an Agent participates a tender on behalf of a Foreign manufacturer Indian agent should submit specific authorization from the authorized person of foreign manufacturer.	
	d) In a tender, either the Indian agent on behalf of the Principal/ OEM or Principal/OEM itself can bid but both cannot bid simultaneously for the same item/ product in the same tender. If an agent submits bid on behalf of principal/OEM, the same agent shall not submit a bid on behalf of another principal/OEM in the same tender for the same item/product. Indian agents cannot represent more than one firm or quote on their behalf for any particular tender.	
	e) Clarifications, either technical or commercial, should be submitted to points specially asked for only. The opportunity so given should not be used for correcting/changing/amending the data/conditions already submitted with the tender	

SL NO	Description	Compliance by Supplier (YES/NO)
		In case of non-compliance, please provide remarks.
25	PRICING: a. Overseas firms should quote prices both on FOB and C&F Chennai Seaport terms. Indigenous bidders should quote prices for delivery of materials at UCSL stores. Insurance shall be to UCSL scope. In the case of E tender C&F price shall be quoted and the freight charges shall be indicated separately under header conditions as per the provision in the CSL e-tender portal.	
	b. Exchange rate variation will not be applicable and the prices shall be fixed for an order within validity period in the case of indigenous/ import orders.	
	c. Offer to be submitted in EUR/USD/INR currency Generally. Indian Firms shall quote in INR only.	
	d. Comparison of prices will be in INR only. All foreign currencies will be converted to INR for comparison and Exchange rate as on date of price bid opening shall be considered for arriving lowest bid	
	e. Prices should be valid for acceptance for a period of four months from the date of tender opening.	
	f. No enhancement of rate for whatsoever cause will be allowed once the offer is accepted and an order is placed. Withdrawal of the quotation after it is accepted or failure to make the supply within the stipulated delivery period, will entail cancellation of the order and forfeiture of Earnest Money Deposit/Security deposit, if any and/or risk purchase, without prejudice to other penal actions, including tender holiday after serving show cause notices, as deemed fit.	
	g. Conditional discounts, if any, will not be reckoned for tender evaluation/ comparison purpose. However, if the bidder becomes L1 at original offer, conditional discount shall also be considered.	
	h. Unpriced bid (price bid without price) duly signed is to be submitted along with techno-commercial offer in the price format, provided. Price should be quoted separately for each item shown in the format. In the event price bid is different from the unpriced format already submitted, yard reserves the right to reject the offer at our discretion without any further discussions. Details of optional items, if any, should be indicated under separate heading in the Techno commercial bid and the respective price details should also be given in the price bid. Combining of figures against more than one item and ambiguous clauses will lead to rejection of the bid.	
	i. If, in the price structure quoted for the required material/ item, there is discrepancy between the unit price and the total price (which is obtained by multiplying the unit price by the quantity), the unit price shall prevail and the total price corrected accordingly. If there is an error in a total corresponding to the addition or subtraction of subtotals, the subtotals shall prevail and the total shall be corrected. If there is a discrepancy between words and figures, amount in words of respective figures shall prevail. If the bidder does not agree to the observation of the UCSL, the tender is liable to be rejected and the same shall be intimated.	
	j. After submission of quotation/price offer no unsolicited correspondence will be entertained.	
	k. Udupi Cochin Shipyard Limited does not bind itself to accept the lowest or any tender but reserves to itself the right to reject any or all or a part of any tender at its discretion.	
	l. UCSL reserves the right to place order to the techno-commercially qualified lowest bidder in full or individual items to the respective lowest bidders in the tender (except in cases where basis of L1 arrival is declared specifically in enquiry). Also please refer loading applicable for split order of value less than 20 lakhs (Clause 15 b)	
26	m. In the case of part quantity order, the quoted freight charges applicable for the entire quantity as per enquiry shall be apportioned and allocated.	
	L1 computation shall be based on total cost of all items, including cost of spares as per tender & Class/certification charges, if any required (excluding GST/IGST). For all import consignments directly imported in UCSL's name/or on High Seas Sale agreement, customs duty is not applicable at import clearance. Customs clearance at Chennai port and transport till UCSL stores shall be to UCSL account.	
26	Integrity Pact: As per Government of India (Central Vigilance Department), UCSL and the SUPPLIER have to sign an Integrity Pact for the high value contracts, for ensuring transparency, equity and competitiveness in public procurement. The Tenderer has to sign Pre-Contract Integrity Pact as per format enclosed and to submit along with your offer. The above is applicable when the total basic price is above Rs. 100.0 lakhs. (present limit)	
27	Grievance Redressal Committee: As an alternate dispute redressal or reconciliation mechanism (other than arbitration clause), Cochin Shipyard has constituted Grievance Redressal Committee. Currently following executives of the committee may be contacted for the settlement of disputes, if any, arising out of all contracts.	
	a) Mrs. Anjana KR, GM (Design)	
	b) Mr.Subramanian K K, Deputy General Manager (HR)	
	c) Mr. Shibu John, Deputy General Manager (Finance)	
28	SUB CONTRACTING AND ASSIGNMENT Supplier shall not contract with any subcontractor and/or vendor without the prior written consent of UCSL. Such consent shall not relieve the Supplier from any of his responsibilities and liabilities under the Purchase Order. In addition, Supplier shall ensure that the terms and conditions of any such contract shall comply with and correspond to the terms and conditions of the Purchase Order.	
	General: a. Prior to price bid opening, UCSL is at liberty to take the credit rating of bidders at our cost on case to case basis, and to include the same during the evaluation of the tender.	
	b. Deviations, if any in the techno-commercial offer from that of the tender enquiry in any form should be clearly furnished in a separate document titled as "List of Deviations", failing which it will be presumed that all the terms and conditions are acceptable.	

SL NO	Description	Compliance by Supplier (YES/NO)
		In case of non-compliance, please provide remarks.
29	c. The techno-commercial part alone will be opened initially on the due date of tender. The price part will be opened only after evaluation of the Techno commercial part. Date of opening of the price part will be intimated to those firms whose Techno- commercial bids would be acceptable after the evaluation. Suppliers are allowed to depute their authorized representative to be present at the time of opening of Price Bid of their tender only. In case of E-Tender, suppliers shall not depute their representative to CSL. However techno-commercially qualified supplier can view the price details in CSL E-procurement portal after opening the price bid	
30	P.O:- a. In the event supplier's offer leads to an agreement to effect supplies, a formal purchase order shall be issued by UCSL on the basis of agreed terms and conditions of tender.	
	b. Upon placement of order (by post or mail) the supplier shall submit the acknowledgement (ie: signed and stamped original/ scanned soft copy by mail) as a token of acceptance of order within 5 days. In case UCSL doesn't receive the above, it will be deemed as accepted.	
	c. Supplier shall submit monthly progress report on the ordering status of raw materials, construction progress of the items ordered by UCSL, supporting with photo evidence.	
31	SUPPLY:- a) UCSL reserve the right to inspect the goods after receipt at UCSL store / prior to dispatch (by UCSL or UCSL authorized agency at yard cost). Short supply / Mismatch / Replacement of Defective items / those not meeting agreed / contractual specification/ Items failing during commissioning shall be sent on air freight/ DDP basis courier freight prepaid/delivered at UCSL store. The customs clearance charges of above shall be to supplier account.	
	b) Replacements during guarantee period to be sent on Duty and all taxes paid basis to location as required by yard/vessel owner with all expenses to supplier account.	
	c) Defective items, if any, after receipt shall be sent back on cost, carriage, handling and insurance prepaid basis including re-export (wherever desired by supplier) to be arranged by supplier. Defective items shall be returned after receipt of replacement item. Supplier shall replace all/ part of items as applicable, in case of rejection, within 4 weeks of reporting the defect, without any additional cost to UCSL. In case the defective materials are not taken back within the said period, UCSL reserves the right to dispose the same without further intimation.	
	d) The supplier shall compensate UCSL for loss on account of shortage in quantity and number of pieces received than that indicated in the bill of lading provided the UCSL's claim is rejected by the insurance due to any fault of supplier. Such claims, if any, shall be supported by recognized surveyors report. The supplier shall also compensate for losses, if any sustained by the UCSL due to defective packing and/or marking of the goods not in accordance with the terms of contract. The time limits for filing claims under clauses above shall be generally 180 days from the date of complete discharge of goods.	
32	UCSL reserves the right to alter, modify the scope of supply at its discretion and in consistent with the policy of the Government of India and statutory bodies under them as applicable to the contract from time to time.	
33	UCSL shall, at its own discretion and costs opt for obtaining credit information report on supplier's financial credentials through credit rating firms. The same shall also be considered as criteria for commercial evaluation. In the event supplier's credit rating is not at least satisfactory, offer will be summarily rejected.	
34	Public procurement policy as per order No. D.O. No. P-45021/2/2017-PP (BE-II) (E-1588) by Department for promotion of Industry and Internal Trade Ministry of Commerce & Industry is applicable for this tender	
35	UCSL reserves the right to commercially reject the offer if compliance is not issued to terms at Sl. No.14, 15, 16, 17 & 18 without any further clarification / notice / communication in this regard from M/s. Udupi Cochin Shipyard Ltd., even though the offer is technically acceptable.	
36	UCSL has an option of receiving 4 + 4 more similar projects within June 2024 and upon exercise of this option by owner yard will confirm the same quantity of item to supplier within June 2024 or earlier. Therefore the price offer shall consist the prices for current projects as well as the discounted prices applicable for these optional projects with validity to confirm the order till June 2024. However the L1 determination shall be purely based on current confirmed quantity.	
37	Restriction of bidders sharing land border with India vide Office memorandum dt 23.7.2020 Order - Public Procurement no 1 dt 23.7.2020, Order no 2 dt 23.7.2020 and Order no 3 dt 24.7.2020	
A	Requirement of registration	
1	Any bidder from a country which shares a land border with India will be eligible to bid in this tender only if the bidder is registered with competent authority as per C below. In works contracts, including turkey contracts, contractors shall not be allowed to sub contract works to any contractor from a country which shares a land border with India unless such contractor is registered with Competent authority. Relevant certificate to be submitted by bidder from a country which shares land border with India except for bidders to which Govt of India has extended lines of Credit or in which Govt of India has development projects, along with the offer as proof of registration with competent authority, failing which the offer will not be considered. A certificate is to be submitted by the bidder for compliance with the order referred above along with tender documents for consideration of offer (Wordings are as per Clause below). If such certificate given by a bidder whose bid is accepted is found to be false, this would be a ground for immediate termination and further legal action in accordance with law.	
2	Wordings of certificate to be submitted along with tender documents for Works involving possibility of sub contracting	

SL NO	Description	Compliance by Supplier (YES/NO)
		In case of non-compliance, please provide remarks.
3	I have read the clause regarding restrictions on procurement from a bidder of a country which shares a land border with India and on sub contracting to contractors from such countries. I certify that this bidder is not from such a country or if from such a country has been registered with the competent authority and will not subcontract any work to a contractor from such countries unless such contractor is registered with the competent authority. I hereby certify that this bidder fulfils all requirements in this regard and is eligible to be considered (Evidence of valid registration by the competent authority shall be attached wherever applicable)	
B	Validity of registration	
1	Registration should be valid at the time of submission of bids and at the time of acceptance of bids. In respect of supply otherwise than by tender, registration should be valid at the time of placement of order. If the bidder is validly registered at the time of acceptance /order placement, registration shall not be a relevant consideration during contract execution.	
C	Competent authority and Procedure for registration	
1	The competent authority for the purpose of registration under the order shall be Registration committee constituted by the Department of Promotion of Industry and Internal Trade (DPIIT). Details of the committee and procedure for registration and restrictions shall be as per Ann I of the Order - Public Procurement no 1 dt 23.7.2020 issued by Ministry of Finance, department of Expenditure.	
D	Definition of Bidder and Bidder from a country sharing land border with India	
1	Bidder is defined as any person or firm or company including any, member of a consortium or joint venture, every artificial, juridical person not falling in any of the descriptions of bidders stated hereinbefore, including any agency, branch or office controlled by such person, participating in a procurement process.	
2	"Bidder from a country which shares a land border with India" for the purpose of this Order means:-	
	a) An entity incorporated, established or registered in such a country; or	
	b) A subsidiary of an entity incorporated, established or registered in such a country; or	
	c) An entity substantially controlled through entities incorporated, established or registered in such a country; or	
	d) An entity whose beneficial owner is situated in such a country; or	
	e) An Indian (or other) agent of such an entity; or	
	f) A natural person who is a citizen of such a country; or	
3	g) A constitution or joint venture where any member of the consortium or joint venture falls under any of the above.	
	Type of business entity	
	(Private Limited Company/ Public Limited Company/ Sole Proprietorship/ One Person Company/ Partnership/ Limited Liability Partnership/ Joint Venture/ Trust/ NGO)	
4	In case of incorporated entity - to attach certificate of incorporation	
	Beneficial Owners - as defined in the Department of Expenditure Order (Public Procurement No.1) issued vide No. F.No.6/18/2019-PPD dated 23rd July, 2020.	
38	Details of all beneficial owners having entitlement of more than 01% of shares or capital or profit to be given, in the format as given in Annexure-I duly certified by practicing Chartered Account in India.	
	Preference to Make in India	
	Purchase preference in accordance with Public procurement (Preference to Make in India Order - 2017) Order from Department of Promotion of Industry and Internal Trade P - 45021 /2/2017/- B.E -II dt ,4.6.2020 and as amended from time to time shall be applicable as per below	
39	In the procurement of all goods/services/works in respect of which there is sufficient local capacity/local competition, only Class I Local suppliers shall be eligible to bid irrespective of purchase value	
	In the procurement of all goods/services /works which are not covered as above and with estimated value of purchase less than Rs 200.0 Crores, only Class I local suppliers along with Class II local suppliers shall be eligible to bid.	
A	Purchase preferences for Class I local suppliers	
B	In the procurement of goods/works covered under 2 above and which are divisible in nature, Class I local supplier shall be eligible for Purchase preference over Class II/Non local supplier as per following	
	If L1 bid is not a Class I local supplier, 50% of the order quantity shall be awarded to L1. Thereafter the lowest bidder among Class I local supplier will be invited to match the L1 price for the remaining 50% quantity subject to Class I local supplier quoted price falling within 20% margin. Contract for that quantity shall be awarded to such Class I local supplier subject to matching L1 price. In case such lowest eligible Class I local supplier fails to match L1 price or accept less than offered quantity, next higher Class I local supplier within 20% margin shall be invited to match the L1 price for the remaining qty and so on. If some quantity is left uncovered on Class I local supplier, such balance quantity shall be ordered on L1 bidder.	
	For procurements that are not divisible in nature and in procurement of services evaluated on price alone, Class I local supplier shall get purchase preference over Class II/Non local supplier as per below	
D	If L1 is not a Class I local supplier, lowest bidder among Class I local supplier will be invited to match L1 price subject to Class I local supplier quoted price falling within 20% of L1 price and contract will be awarded to such Class I local supplier, subject to matching L1 price. In case such lowest eligible Class I local supplier fails to match L1 price, procedure same as para 3 above will be opted. In case none of Class I local suppliers within 20% margin matches L1 price, contract shall be awarded to L1 bidder. The purchase preference as above will be only for Class I local supplier and Class II local supplier will not be eligible for any Purchase preference	

SL NO	Description	Compliance by Supplier (YES/NO)
		In case of non-compliance, please provide remarks.
E	Local content requirement to categorize a supplier as Class I/Class II/Non local supplier shall be as per below. Definition of local content shall be as per order dt 4.6.2020 ie amount of value added in India which shall be the total value of the item procured (excluding net domestic indirect taxes) minus the value of import content in the item (including all customs duties) as a proportion of total value in percentage.	
F	Class I -Local content equal to or greater than 50%	
G	Class II-Local content greater than 20%, less than 50%	
H	Non local -Local content less than 20%	
40	Declaration of local content	
A	Class I local supplier /Class II local supplier at the time of tender shall indicate % of local content and provide self-certification that offered item shall meet the local content requirement for Class I/Class II as applicable including details of locations at which local value addition is made.	
B	In case of procurement for a value in excess of Rs 10.0 Crores Class I/Class II local supplier is to provide a certificate from statutory auditor/cost auditor (for companies) /practicing cost accountant/Chartered accountant (suppliers other than companies) indicating % of local content	
C	Verification of the Certificates issued by the bidder shall be carried out by CSL on random basis. False declarations will attract actions as stipulated in the order referred, including other actions as permissible by law.	
D	Exemption is applicable from provisions of order for purchases with estimated values less than Rs 5.0 lakhs	
E	Notwithstanding above, exemptions for meeting local content as per relevant Clause of order dt 4.6.2020 and as amended from time to time shall apply.	

Note: Statement striked out is not applicable.

PRICE BID FORMAT

Tender Enquiry No: UCSL/MAT/PROJ/2025-26/1755

Tender Enquiry Date: 04 Dec 2025

Vessel/Project: Y 175 - Y182

SL. NO	DESCRIPTION			Total Qty (A)	UOM	Currency	Unit Rate (B)	Total Price C= (A)*(B)
	TTIGHTNESS TYPE	MINIMUM CLEARANCE OPENING	COAMING HEIGHT					
1	WEATHERTIGHT HATCH-102	800X800	600	8	Nos	INR		
2	WATERTIGHT HATCH-103	800X800	600	8	Nos	INR		
3	WEATHERTIGHT HATCH-104	800X800	600	8	Nos	INR		
4	WEATHERTIGHT HATCH-105	800X800	600	8	Nos	INR		
5	WATERTIGHT HATCH-106	800X800	700	8	Nos	INR		
6	WATERTIGHT HATCH-107	DIA 270	600	8	Nos	INR		
7	WATERTIGHT HATCH-108	1280X1170	700	8	Nos	INR		
8	WATERTIGHT HATCH-112	700X700		8	Nos	INR		
9	WEATHERTIGHT HATCH-202	547X820	600	8	Nos	INR		
10	WEATHERTIGHT HATCH-203	547X820	600	8	Nos	INR		
11	WEATHERTIGHT HATCH-204	835X750		8	Nos	INR		
12	WATERTIGHT HATCH-301	1070X1070	600	8	Nos	INR		
13	TOTAL BASIC PRICE FOR 8 SHIPSETS							
14	Packing & Forwarding Charges						To be Included	
15	Freight Charges						To be Included	
16	Class Inspection charges (Marine DNV Class Inspection Charges)						To be Included	
17	Other Charges, if any (specify)						To be Included	
18	Transit Insurance and Unloading Charges						By UCSL	
19	GST (as applicable)							
20	HSN CODE							
21	TOTAL ORDER VALUE FOR 8 SHIPSETS (FOR UCSL STORES PRICE)							

22	Delivery Period required at UCSL stores	<p>On Staggered Delivery Basis</p> <p>UY-175-by 05.02.2026, UY-176-by 21.04.2026</p> <p>UY-177-by 10.07.2026, UY-178-by 08.10.2026</p> <p>UY-179- by 05.02.2027, UY-180- by 21.04.2027</p> <p>UY-181- by 10.07.2027, UY-182- by 08.10.2027</p>
----	---	--

Important Note:

- 1 Price bids received other than the Price Bid Format in Annexure 4, will be rejected.
Un-priced Bid, to be submitted along with techno commercial bid with details like percentage of taxes & duties applicable and showing whether "Amount quoted/ Nil/ Included/ By UCSL" against respective column. Confirmation regarding exercising the option shall be provided during finalization of the purchase order.
- 2
- 3 L1 computation shall be on Overall L1 Basis.

BANK GUARANTEE IN LIEU OF SECURITY DEPOSIT

To

UDUPI COCHIN SHIPYARD LTD
(Formerly Tebma Shipyards Limited)
MALPE HARBOUR COMPLEX, MALPE UDUPI- 576108.

WHEREAS..... (Name & Address of Supplier) (Hereinafter called "**the Supplier**")
has undertaken, in pursuance of Contract.....
No..... Dated: to execute..... (Name of Contract
and brief description of works) (hereinafter called "**the Contract**" AND WHEREAS it has
been stipulated by UDUPI COCHIN SHIPYARD LTD (The Buyer- hereinafter called "**UCSL**") in the
said contract t h a t t h e supplier shall furnish UCSL with a Bank Guarantee for the sum
specified therein as security for compliance with the Supplier's obligations in accordance
with the Contract.

AND WHEREAS we have agreed to give the Supplier such a Bank Guarantee.

NOW THEREFORE we(Name of the
Bank) having its Head Office at.....(Address
of Head Office) and acting through its branch office at.....(Address
of the executing branch) (hereinafter called "**the Bank**") hereby affirm that we are the
Guarantor and responsible to **UCSL**, on behalf of the Supplier up to a total of
.....(amount*
of Guarantee).....in words).

We, the bank, hereby irrevocably undertake to pay you any amount not exceeding in total
the Guarantee Amount upon receipt by us of your demand in writing accompanied by the
following documents:

1. Your signed statement certifying that the Supplier is in breach of his obligation(s) under
the Contract and the respect in which the Supplier is in breach.
2. Your signed statement certifying that the Supplier has been given a prior written
notice by email from you to make good the aforesaid breach and that the Supplier
still failed to fulfill the Contract within 30 days of such notice. A copy of such notice given
by email to the Supplier shall be attached to the demand for payment.

Any demand for payment should contain your authorized signatures which must be authorized by your bankers or by a notary public.

We, the Bank, further agree that no change or addition to or other modification of the terms of the Contract or of the Works to be performed there under or of any of the Contract documents which may be made between **UCSL** and the Supplier shall in any way release us from any liability under this guarantee, and we hereby waive notice of any such change, addition or modification:- We, the Bank, further agree that any change in the constitution of the said contractor or the said bank shall not discharge our liability hereunder.

Notwithstanding anything contained herein:

1. Our liability under this Bank Guarantee shall not exceed.....
(.....Only).
2. This Bank Guarantee shall be valid up to {date} and
3. We are liable to pay the guaranteed amount or any part thereof under this bank guarantee only and only if **UCSL** serve upon us a written claim or demand on or before(validity date).

Any demand for payment under this guarantee must be received by us at this office during working hours on or before the validity date. Should we receive no claim from you by the validity date, our liability to you will cease and the guarantee will definitely become null and void whether returned to us or not.

Yours truly,

Signature and seal of the:

Guarantor:

Name of bank:

Address:Date:

*An amount shall be inserted by the Guarantor, representing the percentage of the Contract Price specified in the Contract and denominated in respective Dollars I Indian Rupees/Other Currency.