



UDUPI COCHIN SHIPYARD LIMITED

Malpe Harbour Complex, Malpe,
Udupi, Karnataka – 576 108, India.
Tel – 0820 2538604

MATERIALS DEPARTMENT

CORRIGENDUM - 1 dated 04.12.2025

ADDITION OF ANNEXURE -1 IN PTS- 183-046 Rev-0

Tender No.: UCSL/MAT/PROJ/2025-26/1752

Date: 02.12.2025

Sir,

CORRIGENDUM-1 dated 04.12.2025 -TENDER ENQUIRY FOR CABLE TRAYS FOR Y183-190

The following terms of the subject tender is amended as follows:

Sl. No.	Description	FOR	READ AS
1	Annexure -3	PTS-183-046 Rev-0	PTS-183-046 Rev-0 along with Annexure 1

Bidders may take note of the above changes and consider the same prior to quoting. All the other terms and conditions of the tender enquiry remains unchanged.

For Udupi Cochin Shipyard Limited,

AGM (Materials & Contract Cell)

Sony Clement T M
AGM - Materials
UCSL

Rev. No.	Pages	Description	Date	Sign.
0	3	FIRST ISSUE	13-10-2025	REVATHI

70 T BOLLARD PULL ASD TUG

This document contains 3 pages


Rev-0



UDUPI COCHIN SHIPYARD LIMITED. (A Cochin Shipyard Company)

YARD NO.	Y183-190	70T BOLLARD PULL ASD TUG														
OWNER	Ocean Sparkle Ltd	PURCHASE TECHNICAL SPECIFICATION OF CABLE TRAYS														
APPROVED	SACHITHLAL															
CHECKED	REVATHI															
PREPARED	SHASHI															
DATE	13-10-2025	Doc. No.: PTS-183-046														
ISSUED TO	DEP.															
NO.																

This document/specification is the property of Udupi Cochin Shipyards Limited, and it must not be copied or the contents thereof or any information received in conjunction therewith must not be imparted /shared to any third party or utilized for any other purpose. The receipt of the document/specification implies that the conditions as mentioned herein are accepted.

 UDUPI COCHIN SHIPYARD LIMITED	UDUPI COCHIN SHIPYARD LTD (FORMERLY TEBMA SHIPYARD LTD) MALPE – 576108 INDIA	70T BP ASD TUG	DOC. No.	PTS-183-046
			REV.	0
		YARD NO. UY183-190	PAGE. No.	2/3

TECHNICAL SPECIFICATION FOR CABLE TRAYS

1. SCOPE OF SUPPLY

- 1.1 The details of the cable trays (dimensional details, materials to be used for fabrication, treatment details, finishing details etc) are indicated for the corresponding cable tray type in the fabrication drawing 171-880-001-Electrical Outfitting Practice & Standards.
- 1.2 Supply of Marine quality **Cable ladders with Z-rungs** as per the quantity requirement table at Sl. No. 2.
- 1.3 The Cable tray materials shall be treated with anti-corrosive material Zinc hot dip galvanized to Marine standard (Mean coating as per ISO standard), which will not readily cause corrosion or rust.
- 1.4 The supply shall be made on the basis of number of pieces and sizes and not as per the weight.
- 1.5 All clarification required if any regarding dimensions, materials, etc for items should be made before submission of offer. Any deviation made from the material, process specification should be intimated and approval to be obtained.


2. QUANTITY REQUIREMENT TABLE

Quantity indicated below is for 01 vessel. Total requirement is for 08 vessels.

Sl. No	CABLE TRAY (mm)	Description	Type	Qty nos/Vessel
1	400	Z TYPE CABLE LADDER 1591(L) X 400(W) GAL.	ZSC-40	100
2	200	Z TYPE CABLE LADDER 1591(L) X 200(W) GAL.	ZSC-20	80
3	100	Z TYPE CABLE LADDER 1591(L) X 100(W) GAL.	ZSC-10	40

3. INSPECTION:

- 3.1 Fabrication at Manufacturer's shop shall be carried out in accordance with manufacturer's standard and requirements mentioned in the drawing 171-880-001 REV 00 placed at Annexure I. Type mentioned in the list at PART B must be fabricated and sample pieces must be offered for approval of yard before the fabrication of lot. If required, Shipyard representatives, Ship owner's representatives and or other agencies of shipyard may do inspection of the same, at fabrication stage.

 UDUPI COCHIN SHIPYARD LIMITED	UDUPI COCHIN SHIPYARD LTD (FORMERLY TEBMA SHIPYARD LTD) MALPE – 576108 INDIA	70T BP ASD TUG	DOC. No.	PTS-183-046
		YARD NO. UY183-190	REV.	0
			PAGE. No.	3/3

4. **CONDITIONS OF OFFER**

- 4.1 The offer shall clearly specify the exact thickness, grade and quantity (in number) being offered, against each line item specified in the quantity requirement table.
- 4.2 Size of all the pieces supplied must be only as per quoted plate size and any deviation in the supplied dimensions of any piece during delivery shall **NOT** be accepted.
- 4.3 Negative variation in the quantity being supplied shall **NOT** be accepted.
- 4.4 The offer should strictly conform to the details indicated in this specification.

Any clarification required regarding technical specification should be sought before submission of the offer.

5. **GUARANTEE**

Manufacturer shall guarantee all the items for any defect in design, material and workmanship for a period as mentioned in the commercial terms of the inquiry.

6. **COMPLIANCE**

All clarifications required regarding dimension, material etc should be made before submission offer. Any deviation made from the material, process specification should be intimated and approval to be obtained.

ANNEXURE-1

ELECTRICAL
YARD
STANDARDS

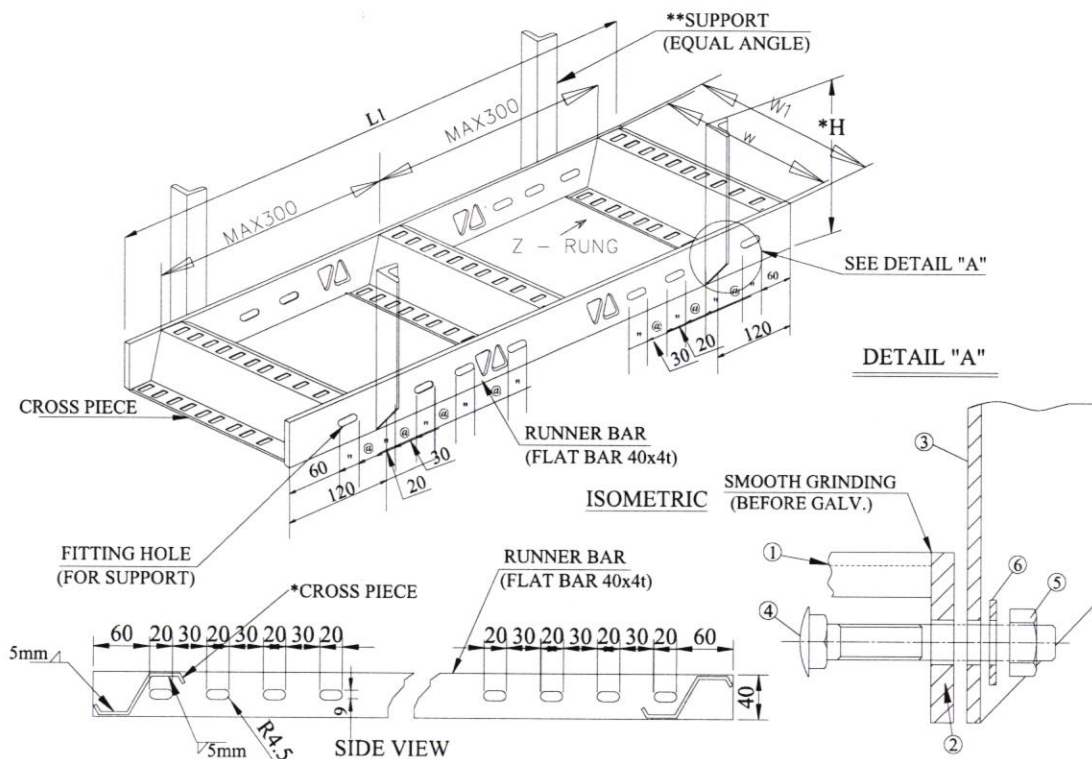
0	25.07.2024	INITIAL ISSUE		SK	TKK	TKK
REV	DATE	DESCRIPTION		PREPARED BY	CHECKED BY	APPROVED BY
		UDUPI COCHIN SHIPYARD LTD. Corporate Office: Malpe Harbour Complex, Malpe, Udupi-576 108, Karnataka, India. Phone:+91 820 2508 100, Fax:+91 820 2508 105, email : info.tsl@udupicsl.com website: www.tebma.co.in				
THIS DRAWING/SPECIFICATION IS THE PROPERTY OF UDUPI COCHIN SHIPYARD LTD, AND MUST NOT BE COPIED OR THE CONTENTS THERE OF OR ANY INFORMATION RECEIVED IN CONJUNCTION THERE WITH MUST NOT BE IMPORTED TO ANY UNAUTHORIZED THIRD PARTY. THE RECEIPT OF THE DRAWING/SPECIFICATION IMPLIES THAT THE CONDITIONS MENTIONED HERE IN ARE ACCEPTED.						
CLIENT OCEAN SPARKLE LIMITED				TITLE ELECTRICAL YARD STANDARDS		
DESIGNER UDUPI COCHIN SHIPYARD LTD.				DRAWING NO. 171 - 880 - 001		
All Dimensions are in mm		SCALE 1:1	FORMAT A4	PROJECT 171,172,174	FILE Gr.No. 5.2	REVISION 0
				PAGE No. 01 OF 06		

CABLE WAY INSTALLATION MATERIALS

DRAWING NO.

171 - 880 - 001

CABLE RACK (TYPICAL)



MATERIAL : STEEL IS 1079 + ZINC HOT DIP GALVANISED

ITEM NO.	DESCRIPTION	REMARK
1	CROSS PIECE	SEE PAGE 06
2	RUNNER BAR	SEE PAGE 06
3	SUPPORT	SEE NOTE
4	CUP SQUARE NECK BOLT	M8 x 20L
5	HEX NUT	M8
6	PLAIN WASHER	FOR M8

NOTE:

1. * SUPPORT

a) H < 1000 or W < 500 : 32 X 32 X 3 EQUAL ANGLE

b) H > 1000 or W > 600 : 40X40X5 EQUAL ANGLE

c) SPECIAL CASES AS INDICATED IN DRAWINGS.

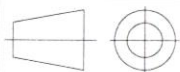
* SUPPORT HEIGHT(H) : SHALL BE DECIDED AS PER THE FITTING ARRANGEMENT DRAWING

TYPE	CABLE RACK LENGTH(L1)	CROSS PIECE	W1	WEIGHT (Kg)	REMARKS
ZSA	10	Z - 10	108	3.31	PAINT: ZINC HOT DIP GALVANISED
	15	Z - 15	158	3.83	
	20	Z - 20	208	4.36	
	30	Z - 30	308	5.4	
	40	Z - 40	408	6.45	
	50	Z - 50	508	7.5	
	60	Z - 60	608	8.55	
ZSB	10	Z - 10	108	4.33	
	15	Z - 15	158	4.99	
	20	Z - 20	208	5.65	
	30	Z - 30	308	6.97	
	40	Z - 40	408	8.29	
	50	Z - 50	508	9.61	
	60	Z - 60	608	10.92	
ZSC	10	Z - 10	108	5.36	
	15	Z - 15	158	6.15	
	20	Z - 20	208	6.95	
	30	Z - 30	308	8.53	
	40	Z - 40	408	10.12	
	50	Z - 50	508	11.71	
	60	Z - 60	608	13.30	

IN NORMAL CASE CABLE WAY SUPPORT TO BE BOLTED TO THE CABLE RACK USING THE SECOND HOLES (ie. 120mm from both ends) ON RUNNER BAR.

IN SPECIAL CASE WHEN THE CABLE RACK'S LENGTH IS CUT SHORT THEN THE HOLES NEAR TO THE CROSS PIECE CAN BE USED.

All Dimensions are in mm



SCALE

1:1

FORMAT

A4

PROJECT

171,172,174

FILE Gr.No.

5.2

REVISION

0

PAGE No.

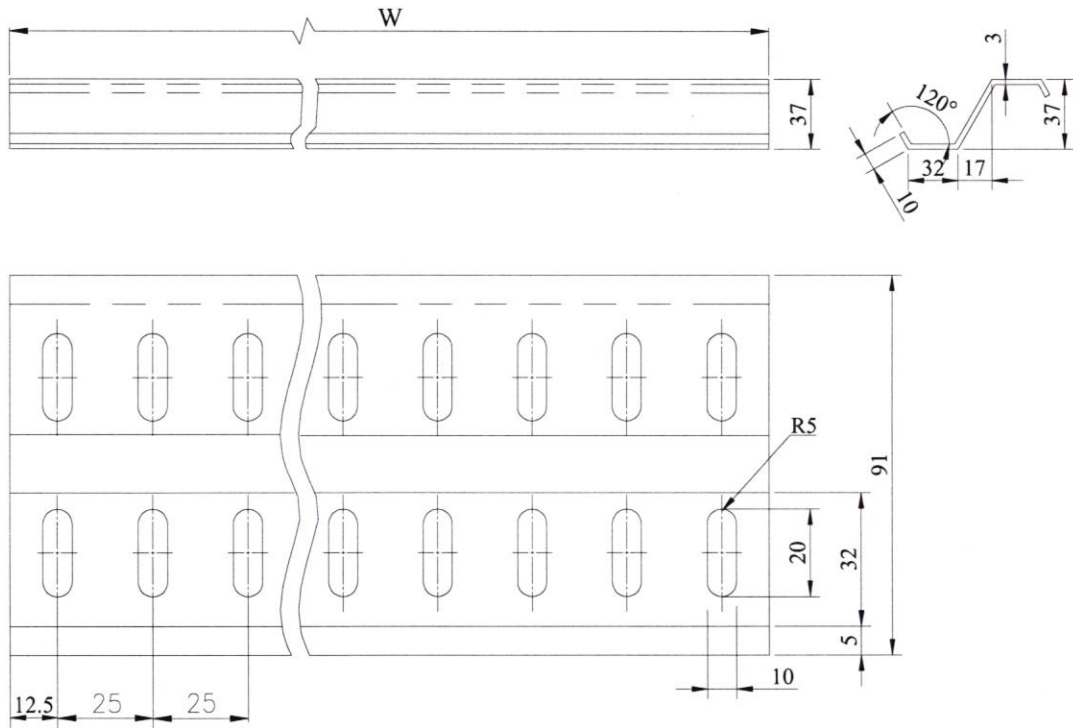
02 OF 06

CABLE WAY INSTALLATION MATERIALS

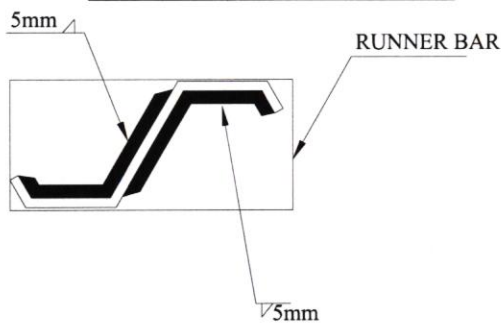
DRAWING NO.

171 - 880 - 001

CROSS PIECE (Z TYPE)



WELDING DETAILS OF CROSS PIECE



MATERIAL : STEEL IS 1079 + ZINC HOT DIP GALVANISED

TYPE	W	NO. OF SLOTS /HANGER	WEIGHT(kg)	PAINT
Z - 10	100	8	0.20	ZINC HOT DIP GALVANISED
Z - 15	150	12	0.31	
Z - 20	200	16	0.41	
Z - 30	300	24	0.62	
Z - 40	400	32	0.83	
Z - 50	500	40	1.04	
Z - 60	600	48	1.25	

All Dimensions are in mm



SCALE

1:1

FORMAT

A4

PROJECT

171,172,174

FILE Gr.No.

5.2

REVISION

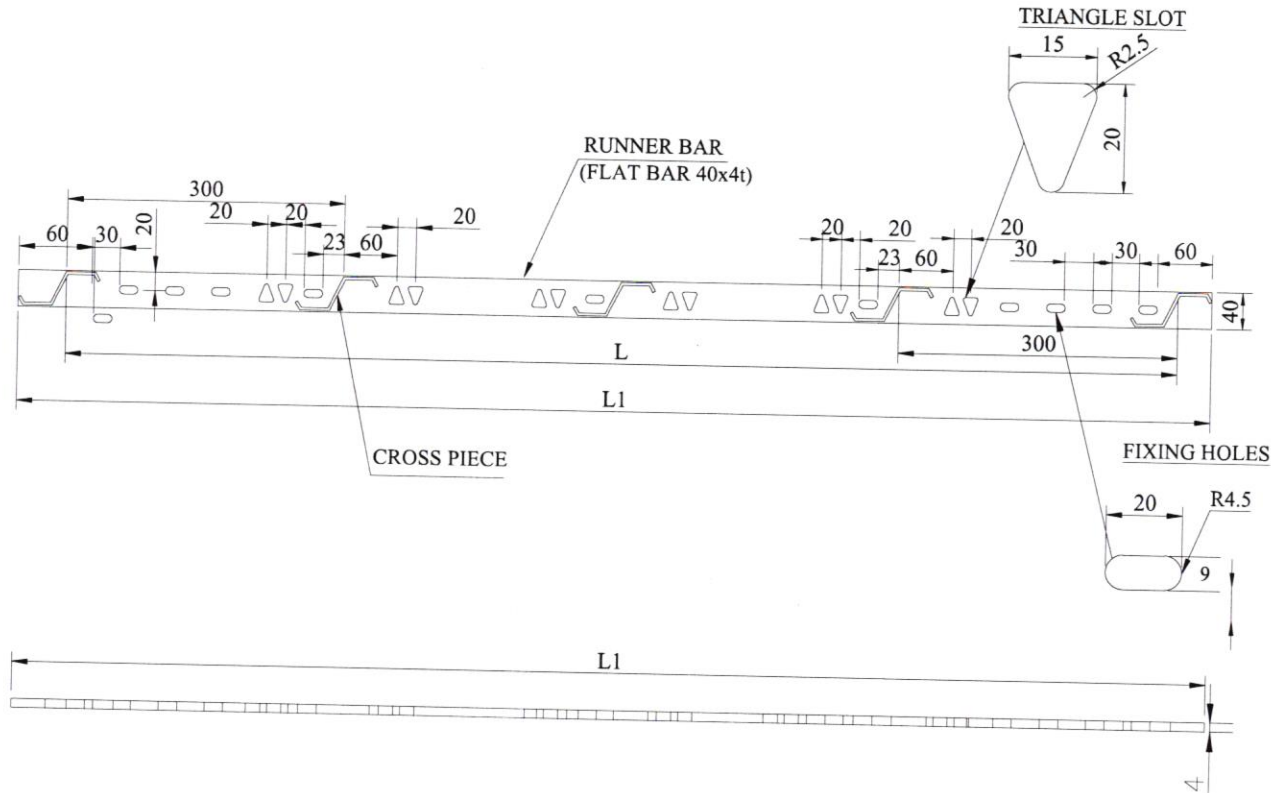
0

PAGE No.

03 OF 06

171 - 880 - 001

TRIANGLE SLOT



TYPE	LENGTH (L)	LENGTH (L1)	FITTING HOLE	WEIGHT(kg)	PAINT
A	900	991	9 X 20X4.5R	1.3105	ZINC HOT DIP GALVANISED
B	1200	1291	9 X 20X4.5R	1.7344	
C	1500	1591	9 X 20X4.5R	3.1583	
*SPECIAL	VARIABLE	VARIABLE	9 X 20X4.5R		

All
Dimensions
are in mm



1:1

A4

171, 172, 174

5.2

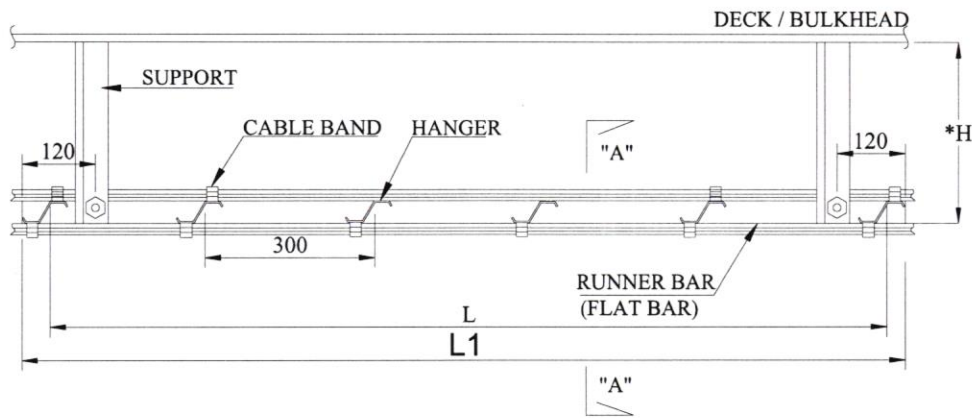
0

04 OF 06

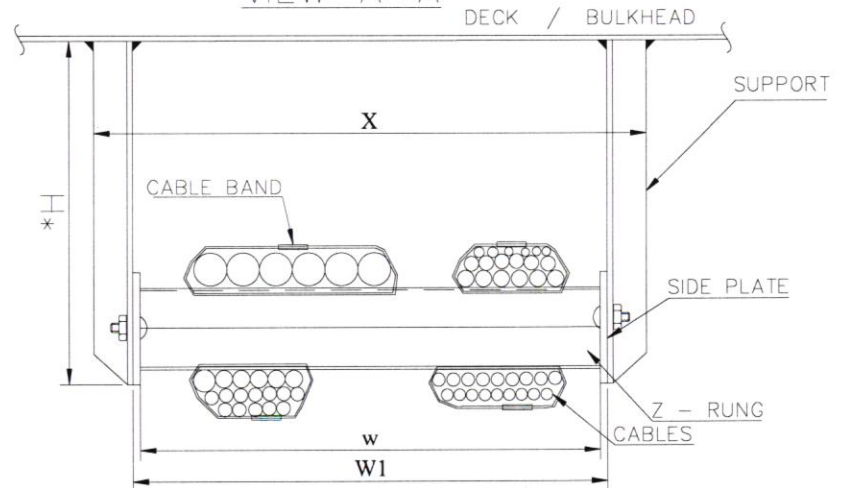
CABLE WAY INSTALLATION MATERIALS

DRAWING NO.
171 - 880 - 001

Z TYPE CABLE RACK SINGLE TIER



VIEW - A ~ A



STANDARD OF CABLE RACK LENGTH

SYMBOL	A	B	C
LENGTH (L)	900	1200	1500
LENGTH (L1)	991	1291	1591

MATERIAL : STEEL IS 1079 + ZINC HOT DIP GALVANISED

TYPE	CROSS PIECE	RUNNER BAR			W	W1	X**	
		SIDE PLATE	FITTING HOLE	BOLT			1	2
ZSA/B/C - 10	Z - 10	40 X 4 F.B.	9 X 20X4.5R	M8 X 20 L	100	108	168	188
ZSA/B/C - 15	Z - 15	"	"	"	150	158	218	238
ZSA/B/C - 20	Z - 20	"	"	"	200	208	268	288
ZSA/B/C - 30	Z - 30	"	"	"	300	308	368	388
ZSA/B/C - 40	Z - 40	"	"	"	400	408	468	488
ZSA/B/C - 50	Z - 50	"	"	"	500	508	568	588
ZSA/B/C - 60	Z - 60	"	"	"	600	608	668	688

NOTE:

1. * SUPPORT

a) H < 1000 or W < 500 : 32 X 32 X 3 EQUAL ANGLE

b) H > 1000 or W > 600 : 40X40X5 EQUAL ANGLE

c) SPECIAL CASES AS INDICATED IN DRAWINGS.

** CASE 1. IF ANGLE IS OF 32x32x3

CASE 2. IF ANGLE IS OF 40x40x5

IN NORMAL CASE CABLE WAY SUPPORT TO BE BOLTED TO THE CABLE RACK USING THE SECOND HOLES
(ie. 120mm FROM BOTH ENDS) ON RUNNER BAR..

IN SPECIAL CASE WHEN THE CABLE RACK'S LENGTH IS CUT SHORT THEN THE HOLES NEAR TO THE CROSS PIECE CAN
BE USED.

CABLES SHOWN ARE INDICATIVE ONLY.

All
Dimensions
are in mm



SCALE

1:1

FORMAT

A4

PROJECT

171,172,174

FILE Gr.No.

5.2

REVISION

0

PAGE No.

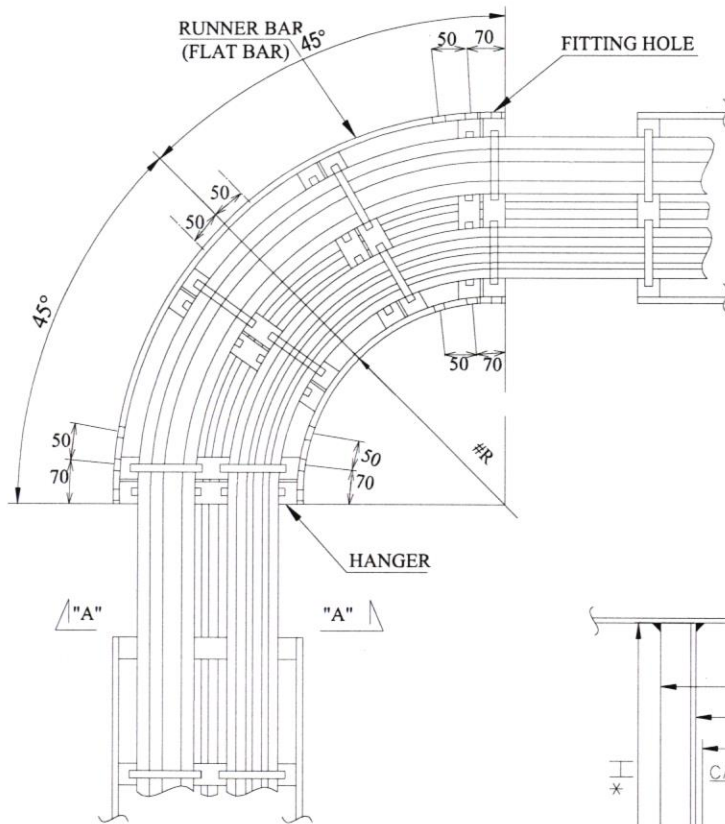
05 OF 06

CABLE WAY INSTALLATION MATERIALS

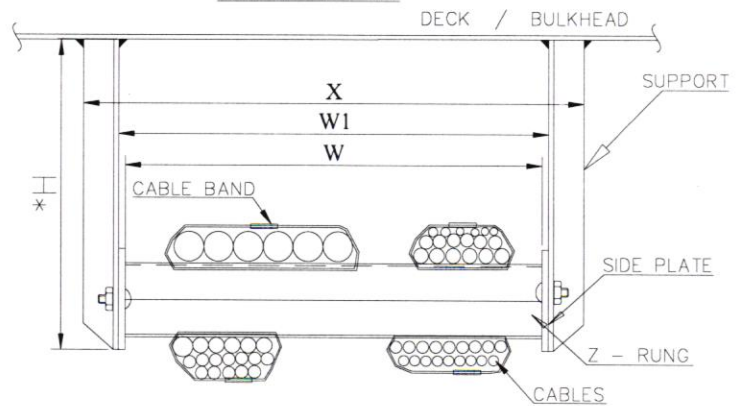
DRAWING NO.

171 - 880 - 001

CABLE RACK BEND TYPE



VIEW - A~A



W<300 : NO. OF *CROSS PIECE - 3 Nos AND W>300 : NO. OF #CROSS PIECE - 4Nos.

W<500 R = 300, W≥500 R=400

MATERIAL : STEEL IS 1079 + ZINC HOT DIP GALVANISED

TYPE	HANGER	RUNNER BAR			W	W1	X**		WEIGHT(kg)
		SIDE PLATE	FITTING HOLE	BOLT			1	2	
ZSR- 10	L - 10	40 X 4t F.B.	9 X 20X4.5R	M8 X 20 L	100	108	168	188	2.35
ZSR- 15	L - 15	"	"	"	150	158	218	238	2.99
ZSR- 20	L - 20	"	"	"	200	208	268	288	3.53
ZSR- 30	L - 30	"	"	"	300	308	368	388	5.51
ZSR- 40	L - 40	"	"	"	400	408	468	488	6.94
ZSR- 50	L - 50	"	"	"	500	508	568	588	8.39
ZSR- 60	L - 60	"	"	"	600	608	668	688	9.84

NOTE:

1. * SUPPORT

a) H < 1000 or W< 500 : 32 X 32 X 3 EQUAL ANGLE

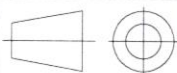
b) H > 1000 or W>600 : 40X40X5 EQUAL ANGLE

c) SPECIAL CASES AS INDICATED IN DRAWINGS.

** CASE 1. IF ANGLE IS OF 32x32x3
CASE 2. IF ANGLE IS OF 40x40x5

CABLES SHOWN ARE INDICATIVE ONLY.

All
Dimensions
are in mm



SCALE

1:1

FORMAT

A4

PROJECT

171,172,174

FILE Gr.No.

5.2

REVISION

0

PAGE No.

06 OF 06