

Date: 08.08.2025

**TENDER ENQUIRY**

Dear Sirs,

This tender enquiry is for the supply of Ladders which is required for 8 no's of for 6300 TDW Dry Cargo Vessel being constructed at Udupi Cochin Shipyard Limited (UCSL), Malpe, (A Govt. of India Enterprises).

Sealed Tenders in duplicate, super scribing the Enquiry Number & Last date for receipt of Quotations on the envelope, are invited TWO BID SYSTEM two separate covers as 'Part- I Techno-commercial' and 'Part- II Price' - both enclosed in the single envelope, for the supply of following materials so as to reach the undersigned on or before the last date and time shown. Tenders should be addressed to Assistant General Manager (Materials), Udupi Cochin Shipyard Limited, Malpe Harbor Complex, Malpe. Udupi-576108, Karnataka, India.

Submission by Email: Offers (both Part- I Techno-commercial' and 'Part- II Price) in two separate password protected PDF file format, can also be made by E-mail ([sony.clement@udupicsl.com](mailto:sony.clement@udupicsl.com), [purchase2@udupicsl.com](mailto:purchase2@udupicsl.com)/ [sunilsnair@udupicsl.com](mailto:sunilsnair@udupicsl.com)/ [muhammad.anas@udupicsl.com](mailto:muhammad.anas@udupicsl.com)/ [midhunthomas@udupicsl.com](mailto:midhunthomas@udupicsl.com)) on or before, the last date & time of receipt of tender as shown below, if delivery of sealed offers cannot be ensured at UCSL on the due date. The offer PDF files (Part- I Techno-commercial' and 'Part- II Price) to be named clearly (UCSL/MAT/PROJ/2025-26/1666- Techno-commercial and UCSL/MAT/PROJ/2025-26/1666 - Price bid)

Enquiry No.	Enquiry Date	Last Dt. & Time for Receipt of Tender	Tender Opening Date & Time
UCSL/MAT/PROJ/2025-26/1666	08.08.2025	22.08.2025, 15:30:00	22.08.2025, 15:30:00

पंजीकृत कार्यालय : एस. नं. 377,  
पझानूर सलाई, पझामाथुर गाँव, बुक्कथुराई पोस्ट,  
मदुरान्तक तालुका, चेंगलपट्ट - 603 308  
तमिलनाडु, भारत।

पंजीकृत कार्यालय : मलपे हार्बर कॉम्प्लेक्स, मलपे,  
उडुपी - 576 108, कर्नाटक, भारत।

Registered office: S. No.377,  
Pazhanoor Salai, Pazhamathur Village,  
Bukkathurai Post, Mathuranthagam Taluk,  
Chengalpattu - 603 308, Tamil Nadu, India

Corporate Office: Malpe Harbour Complex,  
Malpe, Udupi - 576 108, Karnataka, India

Phone:  
+91 820 2538600  
Fax:  
+91 820 2538605  
E-mail:  
[info.tsl@udupicsl.com](mailto:info.tsl@udupicsl.com)  
[www.udupicsl.com](http://www.udupicsl.com)

CERTIFIED  
ISO 9001:2015  
ISO 14001:2015  
ISO 45001:2018



Material	UCSL Material Description			Qty	UOM
1100010362	LADDERS			8	SETS
	Description & remarks	Deck Location	Qty per vessel		
	VENT SUPPLY HATCH GALVANIZED, W=400, step 300	15300 - 11800	1 Nos/Vessel		
	VENT SUPPLY HATCH GALVANIZED, W=400, step 300	15300 - 11800	1 Nos/Vessel		
	T121 WB GALVANIZED, W=400, Step 300	8800-1200	1 Nos/Vessel		
	T122 WB GALVANIZED, W=400, Step 300	8800-1200	1 Nos/Vessel		
	T121 WB GALVANIZED, W=400, Step 300	8800-1200	1 Nos/Vessel		
	T122 WB GALVANIZED, W=400, Step 300	8800-1200	1 Nos/Vessel		
	T201 FO Black Steel, grit Blasted	8800-1200	1 Nos/Vessel		
	T202 FO Black Steel, grit Blasted	8800-1200	1 Nos/Vessel		
	T201 FO Black Steel, grit Blasted	8800-1200	1 Nos/Vessel		
	T202 FO Black Steel, grit Blasted	8800-1200	1 Nos/Vessel		
	T119 WB GALVANIZED, W=400, Step 300	8800-1200	1 Nos/Vessel		
	T120 WB GALVANIZED, W=400, Step 300	8800-1200	1 Nos/Vessel		
	T117 WB GALVANIZED, W=400, Step 300	8800-1200	1 Nos/Vessel		
	T118 WB GALVANIZED, W=400, Step 300	8800-1200	1 Nos/Vessel		
	T115 WB GALVANIZED, W=400, Step 300	8800-1200	1 Nos/Vessel		
	T116 WB GALVANIZED, W=400, Step 300	8800-1200	1 Nos/Vessel		
	T113 WB GALVANIZED, W=400, Step 300	8800-1200	1 Nos/Vessel		
	T114 WB GALVANIZED, W=400, Step 300	8800-1200	1 Nos/Vessel		
	T113 WB GALVANIZED, W=400, Step 300	8800-1200	1 Nos/Vessel		
	T114 WB GALVANIZED, W=400, Step 300	8800-1200	1 Nos/Vessel		
	T111 WB GALVANIZED, W=400, Step 300	8800-1200	1 Nos/Vessel		
	T112 WB GALVANIZED, W=400, Step 300	8800-1200	1 Nos/Vessel		



1100010362	FORECASTLE DECK GALVANIZED, W=400, Step 300	11700-13860	1 Nos/Vessel
	FORECASTLE DECK GALVANIZED, W=400, Step 300	11700-13860	1 Nos/Vessel
	LASHING STORE GALVANIZED, W=400, Step 300	10900-8800	1 Nos/Vessel
	PAINT STORE GALVANIZED, W=400, Step 300	10900-8800	1 Nos/Vessel
	HOLD VENT GALVANIZED, W=400, Step 300, platform*	8800-1200	2 Nos/Vessel
	HOLD VENT GALVANIZED, W=400, Step 300, platform*	8800-1200	2 Nos/Vessel
	FOREPEAK GALVANIZED, W=400, Step 300	11700-8100	2 Nos/Vessel
	FOREPEAK GALVANIZED, W=400, Step 300	8100-1200	1 Nos/Vessel
	BOW THRUSTER ROOM GALVANIZED, W=400, Step 300	6000-1200	1 Nos/Vessel
	Hold Vent Access HOLD GALVANIZED, W=400, Step 300	11700-8100	1 Nos/Vessel
	Hold Vent Access HOLD GALVANIZED, W=400, Step 300	11700-8100	1 Nos/Vessel
	FORE MAST GALVANIZED, W=400, Step 300, with cage	11700-21630	1 Nos/Vessel
	ESCAPE GALVANIZED, W=400, Step 300	1200-8100	2 Nos/Vessel
	HOLD ENTRANCE GALVANIZED, W=400, Step 300	1200-8100	1 Nos/Vessel
	COAMING HATCH GALVANIZED, W=400, Step 300	8800-11800	6 Nos/Vessel
	HOLD VENT GALVANIZED, W=400, Step 300	1200-8100	1 Nos/Vessel
	HOLD ENTRANCE GALVANIZED, W=400, Step 300	1200-8100	2 Nos/Vessel
	BW GALVANIZED, W=400, Step 300	1200-8100	2 Nos/Vessel
	STEER GEAR ROOM GALVANIZED, W=400, Step 300	8800-10900	1 Nos/Vessel
	CO2 ROOM GALVANIZED, W=400, Step 300	8800-10900	1 Nos/Vessel
	BW GALVANIZED, W=400, Step 300	6100-8100	1 Nos/Vessel
	BW GALVANIZED, W=400, Step 300	6100-8100	1 Nos/Vessel
	FUNNEL TRUNK GALVANIZED, W=400, Step 300, platform*	5400-22950	3 Nos/Vessel
	TOP DECK GALVANIZED, W=400, Step 300, with cage*	19950-22950	1 Nos/Vessel

	Aft Mast GALVANIZED, W=400, Step 300, with cage*	22950-30980	1 Nos/Vessel		
	ESCAPE GALVANIZED, W=400, Step 300	8100-11800	1 Nos/Vessel		
	HOLD ENTRANCE GALVANIZED, W=400, Step 300	8100-11800	1 Nos/Vessel		

In case of commercial queries please contact			
Name	Designation	Contact No:	E-mail
Mr. Sunil S Nair	Manager (Material)	+91820 2912104	<a href="mailto:sunilsnair@udupicsl.com">sunilsnair@udupicsl.com</a>
Mr. Muhammad Anas	Manager (Material)	+91820 2912106	<a href="mailto:muhammad.anas@udupicsl.com">muhammad.anas@udupicsl.com</a>
Mr. Midhun Thomas	Assistant Manager (Materials)	+91820 2912116	<a href="mailto:midhunthomas@udupicsl.com">midhunthomas@udupicsl.com</a>
In case of technical queries please contact			
Name	Designation	Mobile no.	E-mail
Mr. Sarun S Kumar	Manager- Hull design	+919952971296	<a href="mailto:sarun.kumar@udupicsl.com">sarun.kumar@udupicsl.com</a>

**Enclosures:**

1. General Terms and Conditions of procurement - Annexure 1
2. Price bid format - Annexure 2
3. PTS -175-039 Rev. No: 1 - Annexure 3
4. Bank Guarantee/Security Deposit Format - Annexure 4

For Udupi Cochin Shipyard Ltd,

Authorized Signatory

**सुनील शशिधरन नायर**  
**SUNIL SASIDHARAN NAIR**  
 प्रबंधक MANAGER  
**उदुपि कोचीन शिपयार्ड लिमिटेड**  
**UDUPI COCHIN SHIPYARD LIMITED**  
 मालपे, कर्नाटक/MALPE, KARNATAKA-576 108

Rev.	Pages	Description	Date	Sign.
0	3	First Issue	28-01-2025	Chaturanan
1	4	Second Issue (Based on updated arrangement drawing and detailed drawings)	30-07-2025	Allen

## 6300 TDW DRY CARGO VESSEL



### UDUPI COCHIN SHIPYARD LTD (A Cochin Shipyard Company)

YARD NO	UY175 - UY182	<b>6300 TDW DRY CARGO VESSEL</b>											
OWNER	WILSON ASA, NORWAY	<b>PURCHASE TECHNICAL SPECIFICATIONS OF LADDERS</b>											
APPROVED	V LALITHA <i>V. LP</i>												
CHECKED	SARUN S KUMAR <i>[Signature]</i>												
PREPARED	ALLEN <i>[Signature]</i>												
DATE	30-07-2025	Doc. No.: PTS-175-039								Rev. No: 1			
ISSUED TO	NO. DEP.												

*This document/specification is the property of Udupi Cochin Shipyard Limited, and it must not be copied or the contents thereof or any information received in conjunction therewith must not be imparted /shared to any third party or utilized for any other purpose. The receipt of the document/specification implies that the conditions as mentioned herein are accepted.*





**UDUPI COCHIN SHIPYARD LTD**  
(A COCHIN SHIPYARD COMPANY)  
MALPE – 576108 INDIA

6300 T DRY CARGO VESSEL

LADDERS

Yard No.

Doc. No

Rev. No

Page No.

UY175 -UY182

PTS-175-039

0

2

**TECHNICAL SPECIFICATION FOR LADDERS**

**1. SCOPE OF SUPPLY**

This specification relates to the supply and manufacture of **Ladders** for the **6300T DRY CARGO VESSEL** being built at Udupi Cochin Shipyard Ltd. The manufacturing and supply shall be as per the attached plans.

**2. TABLE-1**

Below mentioned quantity is for 01 nos vessel. Actual requirement is for 08 nos vessels.

S.no.	Description	Deck Location	Nos. of ladder	Remarks
L1	Vent Supply Hatch	15300-11800	1	Galvanized, W=400, step 300
L2	Vent Supply Hatch	15300-11800	1	Galvanized, W=400, step 300
L3	T121 WB	8800-1200	1	Galvanized, W=400, step 300
L4	T122 WB	8800-1200	1	Galvanized, W=400, step 300
L5	T121 WB	8800-1200	1	Galvanized, W=400, step 300
L6	T122 WB	8800-1200	1	Galvanized, W=400, step 300
L7	T201 FO	8800-1200	1	Black steel, grit blasted
L8	T202 FO	8800-1200	1	Black steel, grit blasted
L9	T201 FO	8800-1200	1	Black steel, grit blasted
L10	T202 FO	8800-1200	1	Black steel, grit blasted
L11	T119 WB	8800-1200	1	Galvanized, W=400, step 300
L12	T120 WB	8800-1200	1	Galvanized, W=400, step 300
L13	T117 WB	8800-1200	1	Galvanized, W=400, step 300
L14	T118 WB	8800-1200	1	Galvanized, W=400, step 300
L15	T115 WB	8800-1200	1	Galvanized, W=400, step 300
L16	T116 WB	8800-1200	1	Galvanized, W=400, step 300
L17	T113 WB	8800-1200	1	Galvanized, W=400, step 300
L18	T114 WB	8800-1200	1	Galvanized, W=400, step 300
L19	T113 WB	8800-1200	1	Galvanized, W=400, step 300
L20	T114 WB	8800-1200	1	Galvanized, W=400, step 300
L21	T111 WB	8800-1200	1	Galvanized, W=400, step 300
L22	T112 WB	8800-1200	1	Galvanized, W=400, step 300
L23	Forecastle Deck	11700-13860	1	Galvanized, W=400, step 300
L24	Forecastle Deck	11700-13860	1	Galvanized, W=400, step 300
L25	Lashing Store	10900-8800	1	Galvanized, W=400, step 300
L26	Paint Store	10900-8800	1	Galvanized, W=400, step 300
L27	Hold Vent	8800-1200	2	Galvanized, W=400, step 300, platform*
L28	Hold Vent	8800-1200	2	Galvanized, W=400, step 300, platform*
L29	Forepeak	11700-8100	2	Galvanized, W=400, step 300
L30	Forepeak	8100-1200	1	Galvanized, W=400, step 300
L31	Bow Thruster Room	6000-1200	1	Galvanized, W=400, step 300



**UDUPI COCHIN SHIPYARD LTD**  
(A COCHIN SHIPYARD COMPANY)  
MALPE - 576108 INDIA

6300 T DRY CARGO VESSEL

LADDERS

Yard No.

Doc. No.

Rev. No.

Page No.

UY175 -UY182

PTS-175-039

0

3

L32	Hold Vent Access HOLD	11700-8100	1	Galvanized, W=400, step 300
L33	Hold Vent Access HOLD	11700-8100	1	Galvanized, W=400, step 300
L34	Fore Mast	11700-21630	1	Galvanized, W=400, step 300, with cage
L35	Escape	1200-8100	2	Galvanized, W=400, step 300
L36	Hold Entrance	1200-8100	1	Galvanized, W=400, step 300
L37	Coaming Hatch	8800-11800	6	Galvanized, W=400, step 300
L38	Hold Vent	1200-8100	1	Galvanized, W=400, step 300
L39	Hold Entrance	1200-8100	2	Galvanized, W=400, step 300
L40	BW	1200-8100	2	Galvanized, W=400, step 300
L41	Steer gear room	8800-10900	1	Galvanized, W=400, step 300
L42	CO2 Room	8800-10900	1	Galvanized, W=400, step 300
L43	BW	6100-8100	1	Galvanized, W=400, step 300
L44	BW	6100-8100	1	Galvanized, W=400, step 300
L45	Funnel Trunk	5400-22950	3	Galvanized, W=400, step 300, platform*
L46	Top Deck	19950-22950	1	Galvanized, W=400, step 300, with cage
L47	Aft Mast	22950-30980	1	Galvanized, W=400, step 300, with cage
L48	Escape	8100-11800	1	Galvanized, W=400, step 300
L49	Hold Entrance	8100-11800	1	Galvanized, W=400, step 300

### 3. CONDITIONS OF SUPPLY

- Ladder material to be mild steel Grade A.
- The Bolts, nuts, washers and pins shall be of Stainless Steel 316 grade.
- All the sharp edges must be rounded off.
- The ladders in the fuel oil tanks are NOT to be galvanized.
- The Galvanization requirement shall be clearly mentioned in the drawings attached.
- The supply and manufacturing of ladders shall be done precisely as per the drawing shared by YARD.
- Preliminary arrangement drawing and detailed drawings are given (refer annexure - 1).
- Ladders are to be blasted and primed with one coat of EPOXY PRIMER prior to the delivery.
- Ladder numbers shall be marked for identification by paint/tag marked on the respective items.
- The manufacturer shall bear the responsibility for the shop tests and delivery of the items to the yard.
- Each set of parts shall be individually packed and protected against dampness and corrosion.
- Material certificates shall be provided along with the delivery.
- The manufacturer's test certificate shall be provided for each consignment of material.
- All other materials required for the ladder and fittings shall be in the supplier's scope.
- The final quantity shall be mentioned in the Purchase order.
- Any clarification required regarding technical specifications shall be sought before submission of order. No deviation will be granted after the placement of order.





**UDUPI COCHIN SHIPYARD LTD**  
(A COCHIN SHIPYARD COMPANY)  
MALPE – 576108 INDIA

6300 T DRY CARGO VESSEL

LADDERS

Yard No.	Doc. No	Rev. No	Page No.
UY175 -UY182	PTS-175-039	0	4

**4. Supplying documents**

- Test and inspection results.
- Detailed Packing list.

**5. PRESERVATION**

- Each item shall be cleaned, prepared & suitably protected for dispatch in such a way so as to prevent ingress of moisture and contamination during transportation & storage.
- The rust / corrosion preventive (if applicable) used shall be removable with a petroleum solvent or the same shall not be harmful to welding.

**6. GUARANTEE**

Manufacturer shall guarantee all the items for any defect in design, material and workmanship for a period as mentioned in the commercial terms of the inquiry.

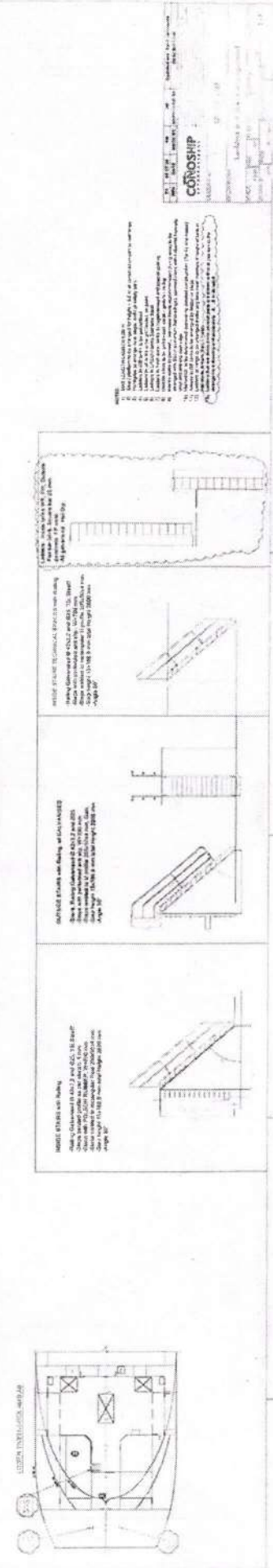
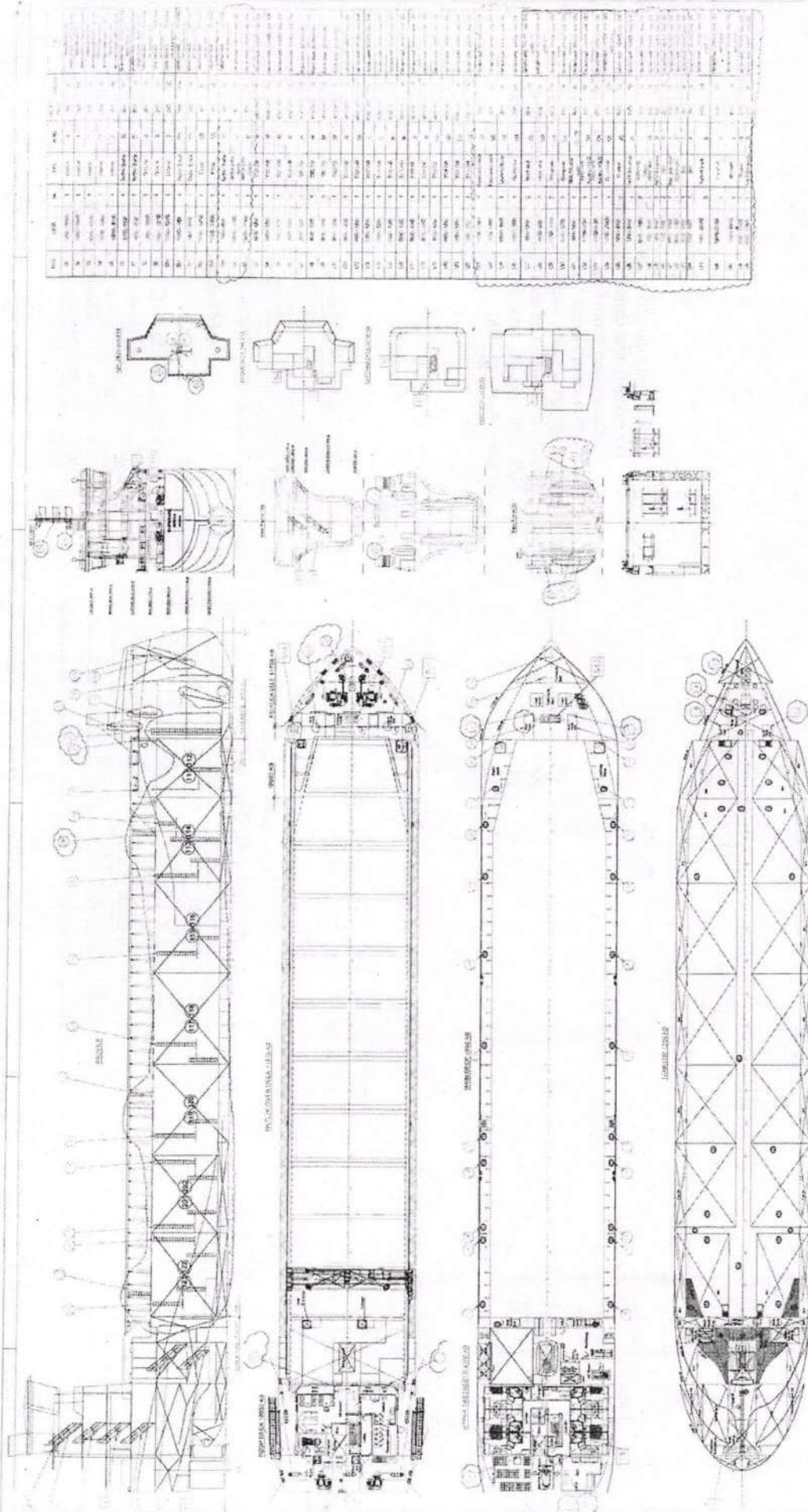
***Note: Notwithstanding any omission in this specification, all items/features required as per class rules/statutory regulations, safe working and good ship building practice shall be included in the offer by the bidder.***

\*\*\*\*\*

**Annexures**

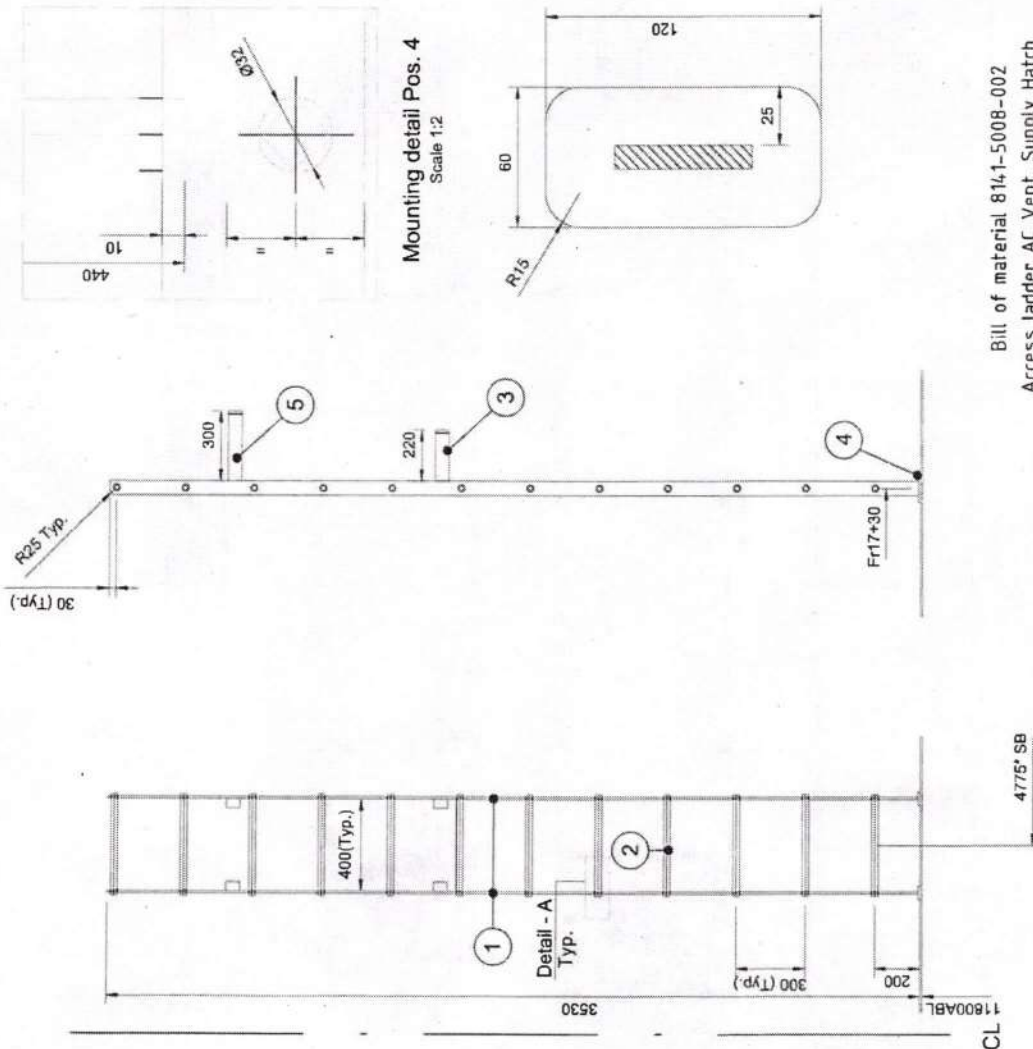
- Arrangement drawing and detailed drawings of ladders.



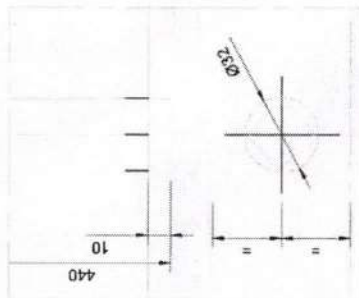


LADDER L1

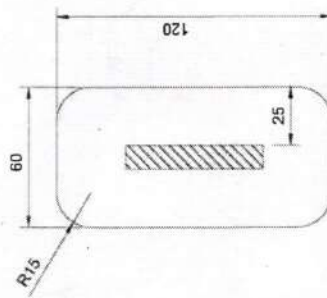
Access ladder AC Vent. Supply Hatch



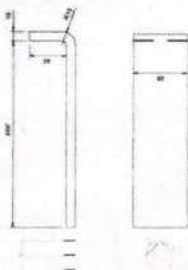
Detail A  
Scale 1:2



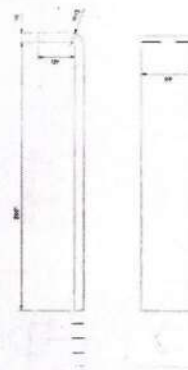
Mounting detail Pos. 4  
Scale 1:2



Mounting detail Pos.3  
2x  
Scale 1:5



Mounting detail Pos.5  
2x  
Scale 1:5



- Note:
- Material: Hot dip galvanized steel;
  - For position see Outfitting drawing;
  - \* - Dimension is not final, to be positioned on board;
  - Reference drawings:
- 8142-5010-001-Rev01 - Hatch AC Vent. Supply.dwg;  
UY175-3141-Rev00- Ladders and stairs Arrangement.dwg;  
UY175-3142-Rev01- Arrangement small hatches and ventilation openings.dwg.

Bill of material 8141-5008-002

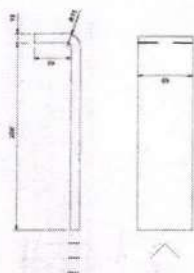
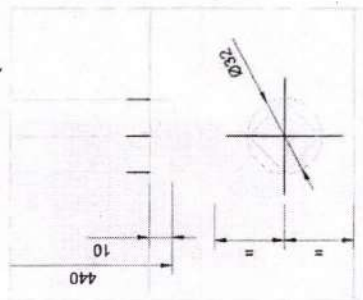
Access ladder AC Vent. Supply Hatch

No.	Pieces	Description	Dimensions
5	2	Flatbar 60x10	L=330
4	2	Flatbar 60x10	L=120
3	2	Flatbar 60x10	L=220
2	12	Squarebar 22	L=440
1	2	Flatbar 60x10	L=3520

REV	DATE	MADE BY	APPROVED BY	DESCRIPTION
<p><b>CONOSHIP INTERNATIONAL</b></p> <p>Copyright CONOSHIP INTERNATIONAL B.V. 2009. All rights reserved. This document or any part thereof may not be made public or disclosed, copied or otherwise reproduced or used in any form or by any means, including, but not limited to, use thereof for the design and manufacturing of technical drawings or other documents, without the prior written consent of CONOSHIP INTERNATIONAL B.V. P.O.Box 6029 - GRONINGEN - THE NETHERLANDS</p>				
DRAWING NO. <b>8141-5008-002</b>				
DESCRIPTION <b>Access ladder AC Vent. Supply Hatch</b>				
SCALE	SIZE	YARD NO.	VERSION	SHEET:
1:20	A3	UY175	00	1-1
DRAWN BY: JM		DATE: 25-06-25		APPROVED BY: JM
		DATE: 25-06-25		

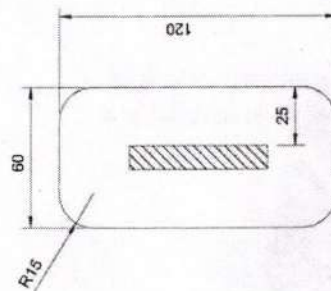


Mounting detail Pos.2

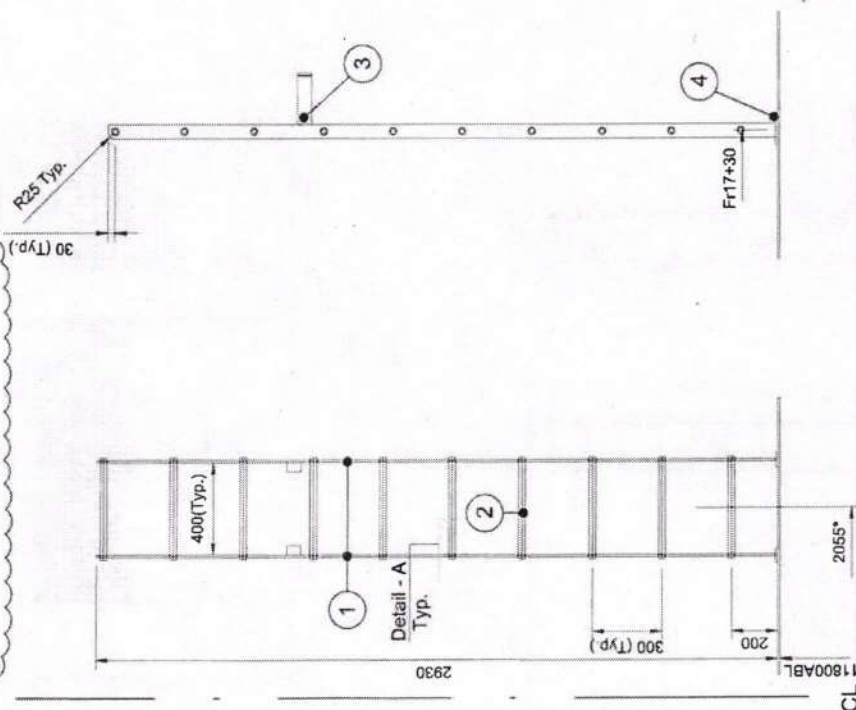
2X  
Scale 1:5Detail A  
Scale 1:2

Mounting detail Pos. 4

Scale 1:2



L2 - Access ladder Hold Vent. Supply Hatch PS



- Note:**
- Material: Hot dip galvanized steel;
  - For position see Outfitting drawing;
  - \* - Dimension is not final, to be positioned on board;
  - Reference drawings:
- 8142-5008-001-Rev00- Hatch Hold Vent. Supply.dwg;  
UY175-3141-Rev00- Ladders and stairs Arrangement.dwg;  
UY175-3142-Rev01- Arrangement small hatches and ventilation openings.dwg.

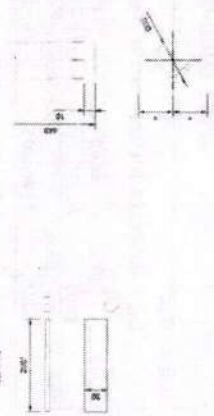
REV	DATE	YM	APPROVED BY	JM	Updated acc. Yard comments
01	26-06-2025				
<b>CONOSHIP INTERNATIONAL</b> COPYRIGHT CONOSHIP INTERNATIONAL B.V. 2009 All rights reserved. This document or any part thereof may not be made public or disclosed, copied or otherwise reproduced or used in any form or by any means, including, but not limited to, use hereof for the design and manufacturing of any product, without the prior written consent of Conoship International B.V. P.O.Box 6029 - GRONINGEN - THE NETHERLANDS					
DRAWING NO. 8141-5008-001					
DESCRIPTION					
L2 - Access ladder Hold Vent. Supply Hatch					
SCALE	SIZE:	YARD NO.	VERSION:	SHEET:	
1:20	A3	UY175	01	1-1	
DRAWN BY:	DATE:	APPROVED BY:	DATE:		
YM	11-04-2025	JM	11-04-2025		

## Bill of material 8141-5008-001

## Access ladder Hold Vent. Supply Hatch

No.	Pieces	Description	Dimensions
4	2	Flatbar 60x10	L=120
3	2	Flatbar 60x10	L=220
2	10	Squarebar 22	L=440
1	2	Flatbar 60x10	L=2930
Dimensions			

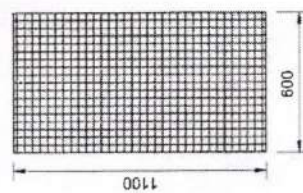
ADDERS L3 & L4

Detail Pos. 7  
Scale 1:5

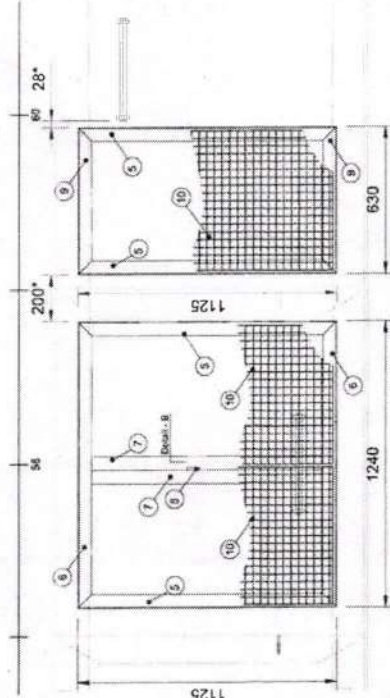
Mounting detail B, Pos. 8  
Scale 1:2



Detail drawings  
Scale 1:10



View A  
Scale 1:10



Bill of material 0441-1003-007  
Ladder's access side frame L3-L4 593P5

[illegible]

**File:** Material Ladders and grating - High galvanneal steel  
Components of the part list are for (L3A, L3B, P1, P2)  
To be Evaluation 2 (200) lines.

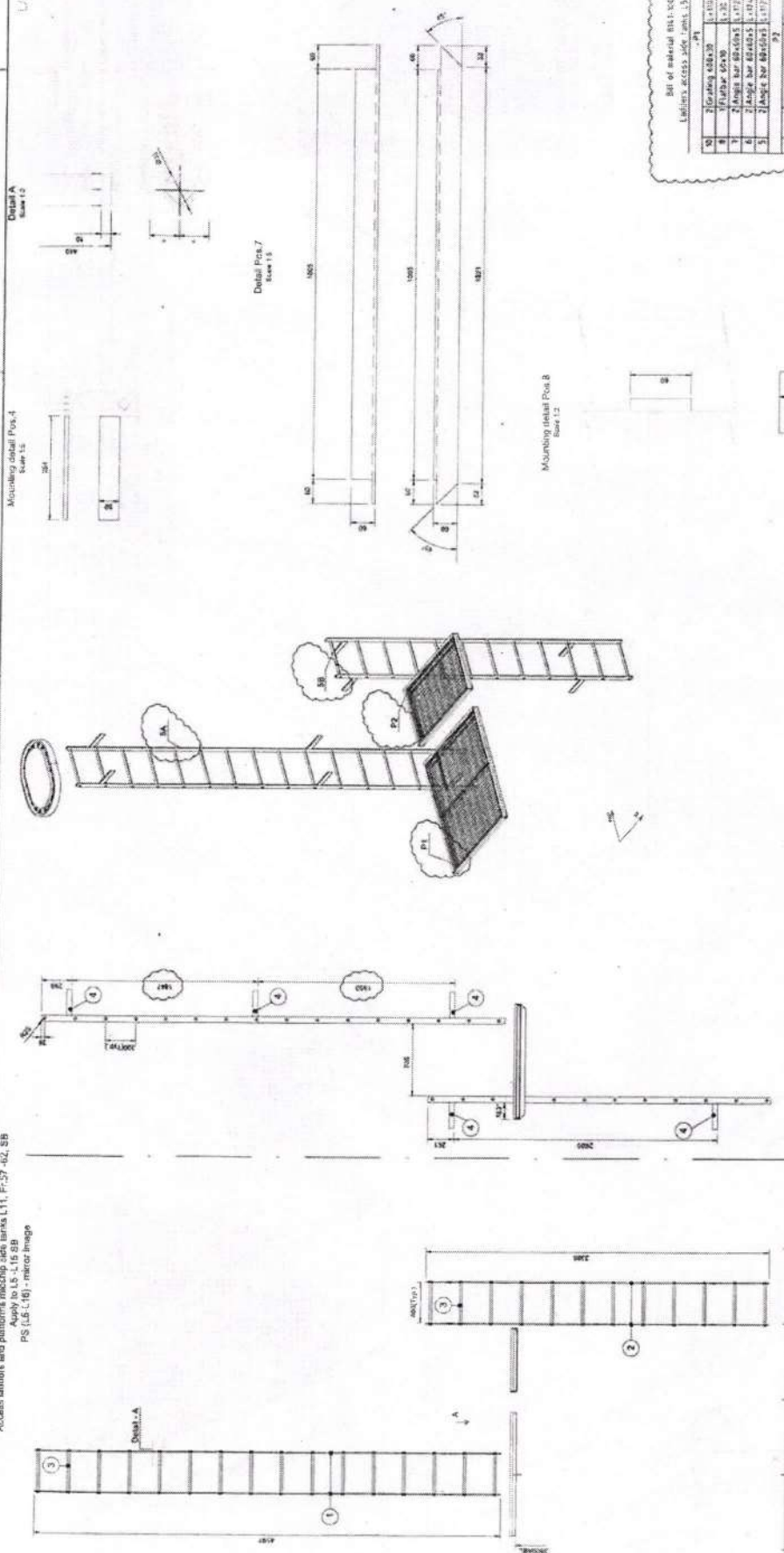
For position see Cultivating drawing.  
 Reference drawings: UY175-3141-Rev00- Ladders and stairs Arrangement drawing  
 UY175-3141-Rev01- Manhole arrangement drawing

adders access side tanks L3-L4 SB&amp;PS

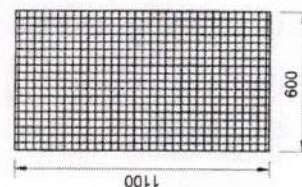
SCALE	SIZE	AL	PERM NO.	REVISED	DATE
1:25					
DRAWN BY	DATE	APPROVED BY	DATE		
VM	10-02-2023	JW	08-02-2023		1-1



Access ladders and platform midship slide larks L11, Fr.57-62, SB  
Apply to L5-L15 SB  
PS (L5-L16) - mirror image



Detailed gratings



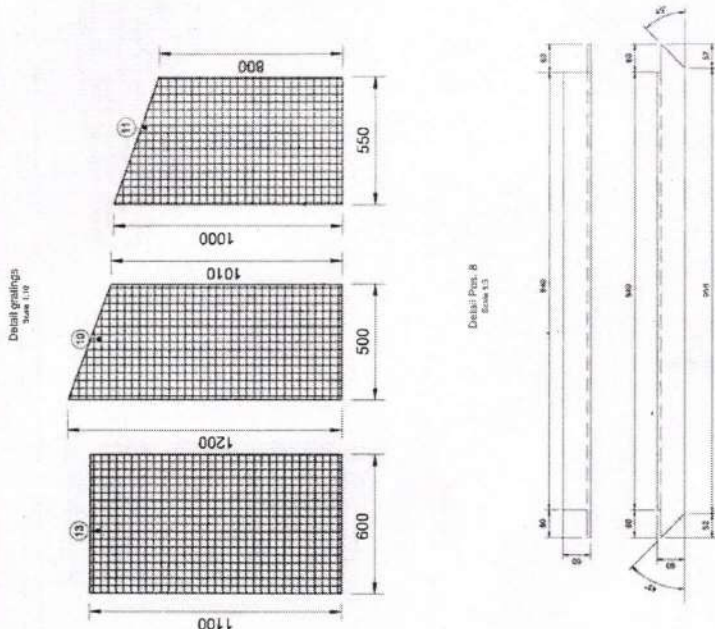
LADIES' ACCESSORY		UNIT		LADIES	
1	1	1	1	1	1
2	2	2	2	2	2
3	3	3	3	3	3
4	4	4	4	4	4
5	5	5	5	5	5
6	6	6	6	6	6
7	7	7	7	7	7
8	8	8	8	8	8
9	9	9	9	9	9
10	10	10	10	10	10
11	11	11	11	11	11
12	12	12	12	12	12
13	13	13	13	13	13
14	14	14	14	14	14
15	15	15	15	15	15
16	16	16	16	16	16
17	17	17	17	17	17
18	18	18	18	18	18
19	19	19	19	19	19
20	20	20	20	20	20
21	21	21	21	21	21
22	22	22	22	22	22
23	23	23	23	23	23
24	24	24	24	24	24
25	25	25	25	25	25
26	26	26	26	26	26
27	27	27	27	27	27
28	28	28	28	28	28
29	29	29	29	29	29
30	30	30	30	30	30
31	31	31	31	31	31
32	32	32	32	32	32
33	33	33	33	33	33
34	34	34	34	34	34
35	35	35	35	35	35
36	36	36	36	36	36
37	37	37	37	37	37
38	38	38	38	38	38
39	39	39	39	39	39
40	40	40	40	40	40
41	41	41	41	41	41
42	42	42	42	42	42
43	43	43	43	43	43
44	44	44	44	44	44
45	45	45	45	45	45
46	46	46	46	46	46
47	47	47	47	47	47
48	48	48	48	48	48
49	49	49	49	49	49
50	50	50	50	50	50
51	51	51	51	51	51
52	52	52	52	52	52
53	53	53	53	53	53
54	54	54	54	54	54
55	55	55	55	55	55
56	56	56	56	56	56
57	57	57	57	57	57
58	58	58	58	58	58
59	59	59	59	59	59
60	60	60	60	60	60
61	61	61	61	61	61
62	62	62	62	62	62
63	63	63	63	63	63
64	64	64	64	64	64
65	65	65	65	65	65
66	66	66	66	66	66
67	67	67	67	67	67
68	68	68	68	68	68
69	69	69	69	69	69
70	70	70	70	70	70
71	71	71	71	71	71
72	72	72	72	72	72
73	73	73	73	73	73
74	74	74	74	74	74
75	75	75	75	75	75
76	76	76	76	76	76
77	77	77	77	77	77
78	78	78	78	78	78
79	79	79	79	79	79
80	80	80	80	80	80
81	81	81	81	81	81
82	82	82	82	82	82
83	83	83	83	83	83
84	84	84	84	84	84
85	85	85	85	85	85
86	86	86	86	86	86
87	87	87	87	87	87
88	88	88	88	88	88
89	89	89	89	89	89
90	90	90	90	90	90
91	91	91	91	91	91
92	92	92	92	92	92
93	93	93	93	93	93
94	94	94	94	94	94
95	95	95	95	95	95
96	96	96	96	96	96
97	97	97	97	97	97
98	98	98	98	98	98
99	99	99	99	99	99
100	100	100	100	100	100
Up	Parcel Description				Overseas

**Note**

- Materials: Ladders and gratings L5-L6, L11-L15 - no dip galvanised slant:
  - Composites: Ladders and gratings L2-L9 dipcoated.
  - Composites: Ladders and gratings L10-L10, L16-L17, L20
  - Timber: Ladders L12-L13, L14, L18-L19, L21
  - Timber: Ladders L22-L23, L24-L25
- Climber is not fixed, to be positioned on floor.
- For position see Climbing drawing.
- Reference drawings: L17175-314-Ren2 - Ladders and slats Arrangement, L17175-314-Ren21 - Ladder Arrangement dwg

[illegible]

## LADDERS L17 à L16

Bill of material 0001-0001-0001

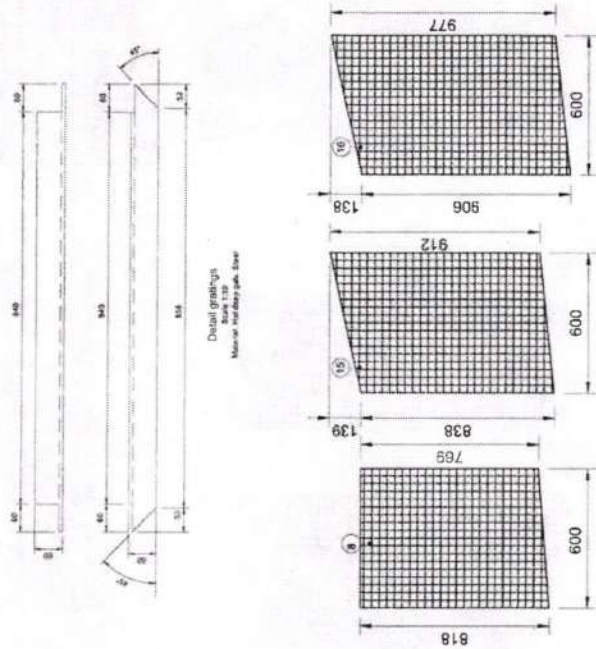
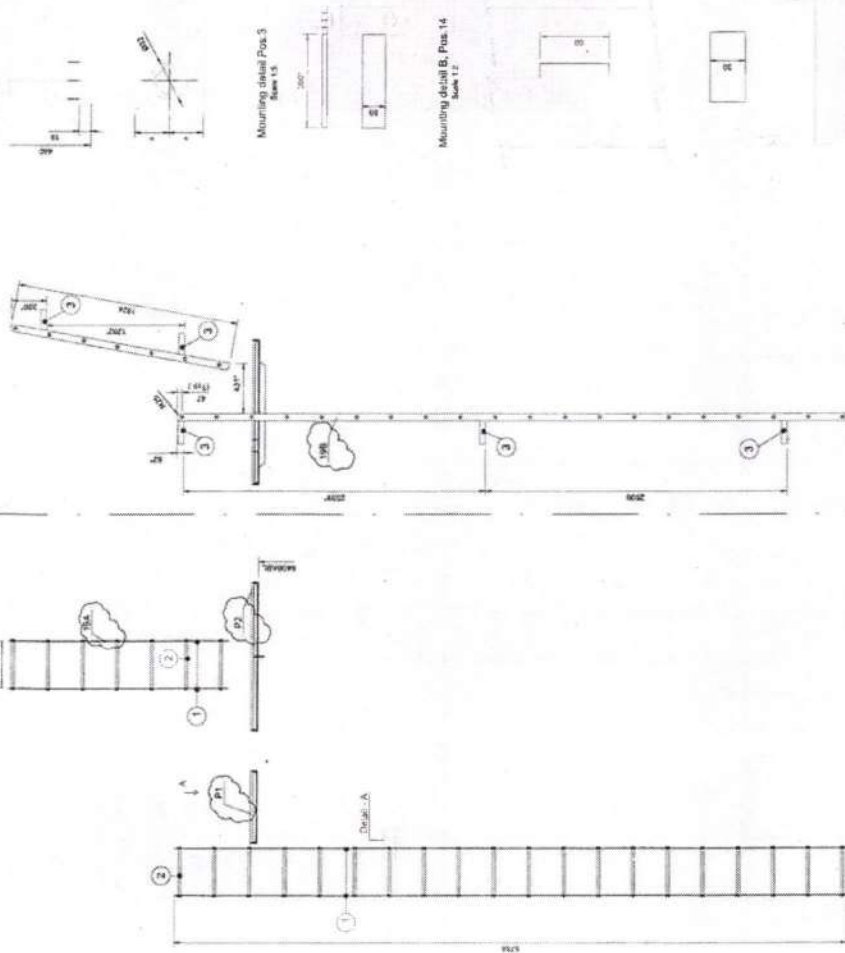
PT	
1	10 galing 500 m 10.50
2	10 galing 500 m 10.50
3	10 galing 500 m 10.50
4	20 galing 500 m 10.50
5	20 galing 500 m 10.50
6	20 galing 500 m 10.50
7	20 galing 500 m 10.50
8	20 galing 500 m 10.50
9	20 galing 500 m 10.50
10	20 galing 500 m 10.50
11	20 galing 500 m 10.50
12	20 galing 500 m 10.50
13	20 galing 500 m 10.50
14	20 galing 500 m 10.50
15	20 galing 500 m 10.50
16	20 galing 500 m 10.50
17	20 galing 500 m 10.50
18	20 galing 500 m 10.50
19	20 galing 500 m 10.50
20	20 galing 500 m 10.50
21	20 galing 500 m 10.50
22	20 galing 500 m 10.50
23	20 galing 500 m 10.50
24	20 galing 500 m 10.50
25	20 galing 500 m 10.50
26	20 galing 500 m 10.50
27	20 galing 500 m 10.50
28	20 galing 500 m 10.50
29	20 galing 500 m 10.50
30	20 galing 500 m 10.50
31	20 galing 500 m 10.50
32	20 galing 500 m 10.50
33	20 galing 500 m 10.50
34	20 galing 500 m 10.50
35	20 galing 500 m 10.50
36	20 galing 500 m 10.50
37	20 galing 500 m 10.50
38	20 galing 500 m 10.50
39	20 galing 500 m 10.50
40	20 galing 500 m 10.50
41	20 galing 500 m 10.50
42	20 galing 500 m 10.50
43	20 galing 500 m 10.50
44	20 galing 500 m 10.50
45	20 galing 500 m 10.50
46	20 galing 500 m 10.50
47	20 galing 500 m 10.50
48	20 galing 500 m 10.50
49	20 galing 500 m 10.50
50	20 galing 500 m 10.50
51	20 galing 500 m 10.50
52	20 galing 500 m 10.50
53	20 galing 500 m 10.50
54	20 galing 500 m 10.50
55	20 galing 500 m 10.50
56	20 galing 500 m 10.50
57	20 galing 500 m 10.50
58	20 galing 500 m 10.50
59	20 galing 500 m 10.50
60	20 galing 500 m 10.50
61	20 galing 500 m 10.50
62	20 galing 500 m 10.50
63	20 galing 500 m 10.50
64	20 galing 500 m 10.50
65	20 galing 500 m 10.50
66	20 galing 500 m 10.50
67	20 galing 500 m 10.50
68	20 galing 500 m 10.50
69	20 galing 500 m 10.50
70	20 galing 500 m 10.50
71	20 galing 500 m 10.50
72	20 galing 500 m 10.50
73	20 galing 500 m 10.50
74	20 galing 500 m 10.50
75	20 galing 500 m 10.50
76	20 galing 500 m 10.50
77	20 galing 500 m 10.50
78	20 galing 500 m 10.50
79	20 galing 500 m 10.50
80	20 galing 500 m 10.50
81	20 galing 500 m 10.50
82	20 galing 500 m 10.50
83	20 galing 500 m 10.50
84	20 galing 500 m 10.50
85	20 galing 500 m 10.50
86	20 galing 500 m 10.50
87	20 galing 500 m 10.50
88	20 galing 500 m 10.50
89	20 galing 500 m 10.50
90	20 galing 500 m 10.50
91	20 galing 500 m 10.50
92	20 galing 500 m 10.50
93	20 galing 500 m 10.50
94	20 galing 500 m 10.50
95	20 galing 500 m 10.50
96	20 galing 500 m 10.50
97	20 galing 500 m 10.50
98	20 galing 500 m 10.50
99	20 galing 500 m 10.50
100	20 galing 500 m 10.50

Note:

- Material: Ladders and gratings - Hot dip galvanized steel;
- Components of the part list are for: 1 (one) ladder;
- To be executed 2 (two) ladders;
- Dimension is not final, to be positioned on board;
- For position see Outfitting drawing;
- Reference drawings: UY17S-3141-Rev00- Ladders and stairs  
UY17S-3141-Rev01- Manhole arrangement

81	07-07-73	YW	JM	UNITED STATES AIR FORCE
REV	DATE	MADE BY	APPROVED BY	DESCRIPTION
				008
				008
8141-1003-002 Ladders access slide tanks L17-18 S&S'S 1-1				






Bill of material 814-0017-014  
44-101-413 resolution 10 110  
Sellers access only 19-20-2025

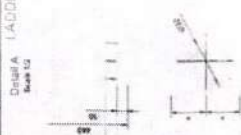
P1		P2		P3	
6	10/Jan/95 605/30	8	10/Jan/95 605/30	10	10/Jan/95 605/30
7	11/Jan/95 606/30	9	11/Jan/95 606/30	11	11/Jan/95 606/30
8	12/Jan/95 607/30	10	12/Jan/95 607/30	12	12/Jan/95 607/30
9	13/Jan/95 608/30	11	13/Jan/95 608/30	13	13/Jan/95 608/30
10	14/Jan/95 609/30	12	14/Jan/95 609/30	14	14/Jan/95 609/30
11	15/Jan/95 610/30	13	15/Jan/95 610/30	15	15/Jan/95 610/30
12	16/Jan/95 611/30	14	16/Jan/95 611/30	16	16/Jan/95 611/30
13	17/Jan/95 612/30	15	17/Jan/95 612/30	17	17/Jan/95 612/30
14	18/Jan/95 613/30	16	18/Jan/95 613/30	18	18/Jan/95 613/30
15	19/Jan/95 614/30	17	19/Jan/95 614/30	19	19/Jan/95 614/30
16	20/Jan/95 615/30	18	20/Jan/95 615/30	20	20/Jan/95 615/30
17	21/Jan/95 616/30	19	21/Jan/95 616/30	21	21/Jan/95 616/30
18	22/Jan/95 617/30	20	22/Jan/95 617/30	22	22/Jan/95 617/30
19	23/Jan/95 618/30	21	23/Jan/95 618/30	23	23/Jan/95 618/30
20	24/Jan/95 619/30	22	24/Jan/95 619/30	24	24/Jan/95 619/30
21	25/Jan/95 620/30	23	25/Jan/95 620/30	25	25/Jan/95 620/30
22	26/Jan/95 621/30	24	26/Jan/95 621/30	26	26/Jan/95 621/30
23	27/Jan/95 622/30	25	27/Jan/95 622/30	27	27/Jan/95 622/30
24	28/Jan/95 623/30	26	28/Jan/95 623/30	28	28/Jan/95 623/30
25	29/Jan/95 624/30	27	29/Jan/95 624/30	29	29/Jan/95 624/30
26	30/Jan/95 625/30	28	30/Jan/95 625/30	30	30/Jan/95 625/30
27	31/Jan/95 626/30	29	31/Jan/95 626/30	31	31/Jan/95 626/30
28	1/Jan/96 627/30	30	1/Jan/96 627/30	32	1/Jan/96 627/30
29	2/Jan/96 628/30	31	2/Jan/96 628/30	33	2/Jan/96 628/30
30	3/Jan/96 629/30	32	3/Jan/96 629/30	34	3/Jan/96 629/30
31	4/Jan/96 630/30	33	4/Jan/96 630/30	35	4/Jan/96 630/30
32	5/Jan/96 631/30	34	5/Jan/96 631/30	36	5/Jan/96 631/30
33	6/Jan/96 632/30	35	6/Jan/96 632/30	37	6/Jan/96 632/30
34	7/Jan/96 633/30	36	7/Jan/96 633/30	38	7/Jan/96 633/30
35	8/Jan/96 634/30	37	8/Jan/96 634/30	39	8/Jan/96 634/30
36	9/Jan/96 635/30	38	9/Jan/96 635/30	40	9/Jan/96 635/30
37	10/Jan/96 636/30	39	10/Jan/96 636/30	41	10/Jan/96 636/30
38	11/Jan/96 637/30	40	11/Jan/96 637/30	42	11/Jan/96 637/30
39	12/Jan/96 638/30	41	12/Jan/96 638/30	43	12/Jan/96 638/30
40	13/Jan/96 639/30	42	13/Jan/96 639/30	44	13/Jan/96 639/30
41	14/Jan/96 640/30	43	14/Jan/96 640/30	45	14/Jan/96 640/30
42	15/Jan/96 641/30	44	15/Jan/96 641/30	46	15/Jan/96 641/30
43	16/Jan/96 642/30	45	16/Jan/96 642/30	47	16/Jan/96 642/30
44	17/Jan/96 643/30	46	17/Jan/96 643/30	48	17/Jan/96 643/30
45	18/Jan/96 644/30	47	18/Jan/96 644/30	49	18/Jan/96 644/30
46	19/Jan/96 645/30	48	19/Jan/96 645/30	50	19/Jan/96 645/30
47	20/Jan/96 646/30	49	20/Jan/96 646/30	51	20/Jan/96 646/30
48	21/Jan/96 647/30	50	21/Jan/96 647/30	52	21/Jan/96 647/30
49	22/Jan/96 648/30	51	22/Jan/96 648/30	53	22/Jan/96 648/30
50	23/Jan/96 649/30	52	23/Jan/96 649/30	54	

**Note:**

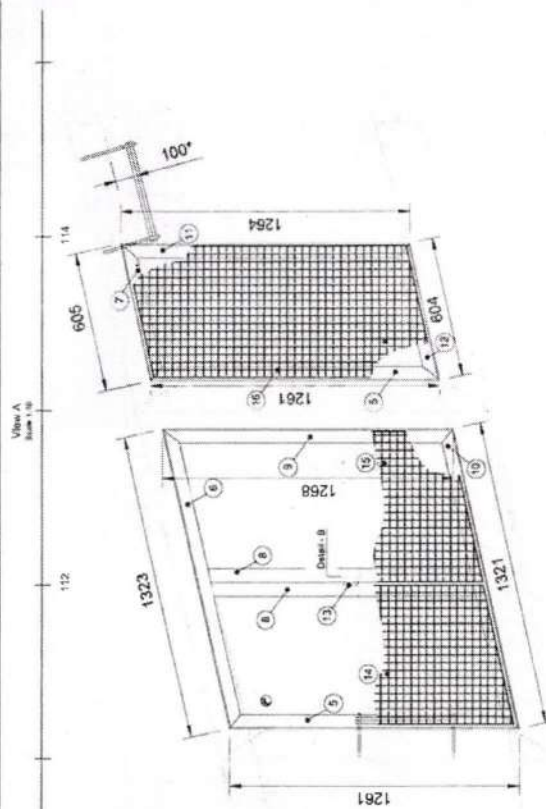
- Material: Ladders, platforms and ladders - Hot Dip Galvanized steel
- Components of the part list are for 2 (two) ladders and platforms.
- To be executed 2 (two) times.
- • Dimension is not final, to be positioned on board.

UV175-3141-Rev00- Ladders and stairs Arrangement dwg  
UV175-3141-Rev01- Manhole arrangement dwg

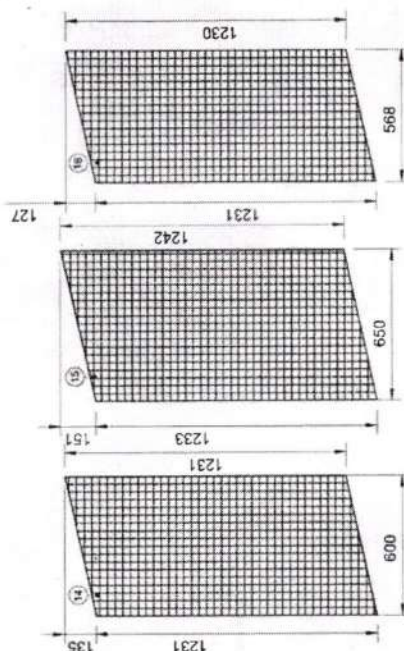
ST	18-07-2025	TIME	20	Updated all. Total earnings...
SLIP	DATE	WAS 67	APPROVED BY	DISCOUNT
				
<p>FOR THE MONTH OF JULY 2025</p> <p>FOR THE MONTH OF JULY 2025</p>				
<p>8141-1003-004</p>				
<p>Loaders across slide tanks L 19-20 SB&amp;PS</p>				

Mourling dated B, Page 13  
Page 12

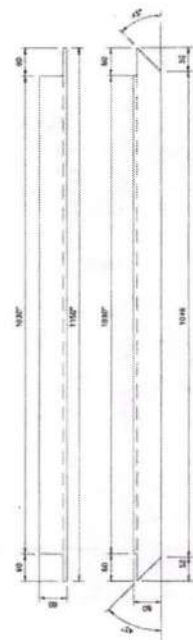
12



**Detail drawings**  
 Section 1-100



Selected Post-8



Accounting detail Pos. 4  
Pos. 5

List of medical tests: 1073-465	
Listed under the tests: 1074-77-504P5	
15	15) Gating 550-320
16	16) Gating 400-200
17	17) Gating 300-150
18	18) Gating 200-100
19	19) Gating 150-75
20	20) Gating 100-50
21	21) Gating 50-25
22	22) Gating 25-12.5
23	23) Gating 12.5-6.25
24	24) Gating 6.25-3.125
25	25) Gating 3.125-1.5625
26	26) Gating 1.5625-0.78125
27	27) Gating 0.78125-0.390625
28	28) Gating 0.390625-0.1953125
29	29) Gating 0.1953125-0.09765625
30	30) Gating 0.09765625-0.048828125
31	31) Gating 0.048828125-0.0244140625
32	32) Gating 0.0244140625-0.01220703125
33	33) Gating 0.01220703125-0.006103515625
34	34) Gating 0.006103515625-0.0030517578125
35	35) Gating 0.0030517578125-0.00152587890625
36	36) Gating 0.00152587890625-0.000762939453125
37	37) Gating 0.000762939453125-0.0003814697265625
38	38) Gating 0.0003814697265625-0.00019073486328125
39	39) Gating 0.00019073486328125-0.000095367431640625
40	40) Gating 0.000095367431640625-0.0000476837158203125
41	41) Gating 0.0000476837158203125-0.00002384185791015625
42	42) Gating 0.00002384185791015625-0.000011920928955078125
43	43) Gating 0.000011920928955078125-0.0000059604644775390625
44	44) Gating 0.0000059604644775390625-0.00000298023223876953125
45	45) Gating 0.00000298023223876953125-0.000001490116119384765625
46	46) Gating 0.000001490116119384765625-0.0000007450580596923828125
47	47) Gating 0.0000007450580596923828125-0.00000037252902984619140625
48	48) Gating 0.00000037252902984619140625-0.000000186264514923095703125
49	49) Gating 0.000000186264514923095703125-0.0000000931322574615478515625
50	50) Gating 0.0000000931322574615478515625-0.00000004656612873077392578125
51	51) Gating 0.00000004656612873077392578125-0.000000023283064365386962890625
52	52) Gating 0.000000023283064365386962890625-0.0000000116415321826934814453125
53	53) Gating 0.0000000116415321826934814453125-0.00000000582076609134674072265625
54	54) Gating 0.00000000582076609134674072265625-0.000000002910383045673370361328125
55	55) Gating 0.000000002910383045673370361328125-0.00000000145519152283668518056640625
56	56) Gating 0.00000000145519152283668518056640625-0.000000000727595761418342590283203125
57	57) Gating 0.000000000727595761418342590283203125-0.0000000003637978807091712951416015625
58	58) Gating 0.0000000003637978807091712951416015625-0.00000000018189894035458564757580078125
59	59) Gating 0.00000000018189894035458564757580078125-0.000000000090949470177292823787900390625
60	60) Gating 0.000000000090949470177292823787900390625-0.0000000000454747350886461918939501953125
61	61) Gating 0.0000000000454747350886461918939501953125-0.00000000002273736754432309594697509765625
62	62) Gating 0.00000000002273736754432309594697509765625-0.000000000011368683772161547973487548828125
63	63) Gating 0.000000000011368683772161547973487548828125-0.000000000005684341886080773986743774140625
64	64) Gating 0.000000000005684341886080773986743774140625-0.0000000000028421709430403869933718870703125
65	65) Gating 0.0000000000028421709430403869933718870703125-0.00000000000142108547152019349668594353515625
66	66) Gating 0.00000000000142108547152019349668594353515625-0.000000000000710542735760096748342971767578125
67	67) Gating 0.000000000000710542735760096748342971767578125-0.000000000000355271367880048374171488888690625
68	68) Gating 0.000000000000355271367880048374171488888690625-0.0000000000001776356839400241870857444444353125
69	69) Gating 0.0000000000001776356839400241870

- \* **Note:**
- \* Material: Ladders, rungs and railings - HSL dip galvanised steel.
- \* Components of the part list are for (L21A, L21B, P1, P2):
- \* To be executed 2 (two) times.
- \* - Dimension is not final, to be positioned on board.
- \* For position see Outfitting drawing.
- \* Reference drawings: UY175-3141-Rev00: Ladders and stairs Arrangement  
UY175-3141-Rev01: Manhole arrangement 20g

8141-1003-005

**Ladders access slide tanks L21-22 SB&PS**

0:25	A1	UT175	01
EXAMINER	DATE	APPROVED BY	DATE

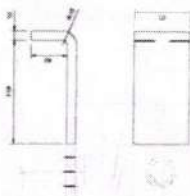
1-1



Access ladder PS  
SB - mirror image

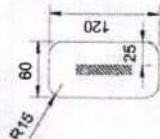
Mounting detail Pos.4

2x  
Scale 1:5

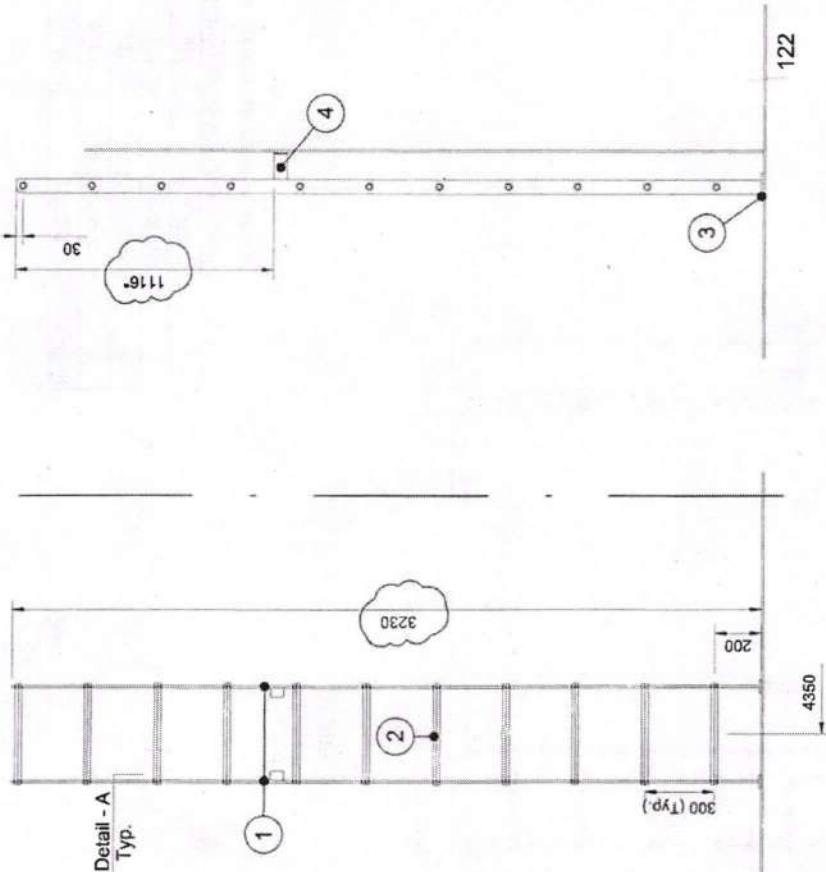


Mounting detail Pos. 3

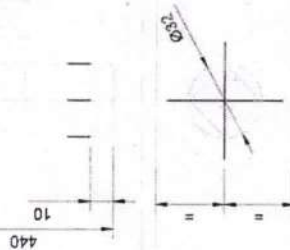
Scale 1:5



Detail - A  
Typ.



Detail A  
Scale 1:2



Bill of material 8141-4009-002

Access ladder

No.	Pieces	Description	Dimensions
4	8	Flatbar 60x10	L=150
3	6	Flatbar 60x10	L=120
2	11	Squarebar 22	L=440
1	2	Flatbar 60x10	L=3130

Note:

- Material: Hot dip galvanized steel;
- Components of the part list are for PS ladder;
- \* - Dimension is not final, to be positioned on board;
- For position see Outfitting drawing;
- Reference drawings:  
UY175-3141-Rev00- Ladders and stairs Arrangement.dwg.

**CONOSHIP**  
INTERNATIONAL

Copyright CONOSHIP INTERNATIONAL B.V. 2009.  
All rights reserved. This document or any part thereof may not be made public without the written consent of CONOSHIP INTERNATIONAL B.V. in any form or by any means, including, but not limited to, electronic, mechanical, photocopying, recording, or by any information storage and retrieval system, for the purpose of reproducing, distributing, or otherwise making available to the public, in whole or in part, any part of this document, without prior written consent of CONOSHIP INTERNATIONAL B.V.  
P.O. Box 6029 - GRONINGEN - THE NETHERLANDS

DRAWING NO.

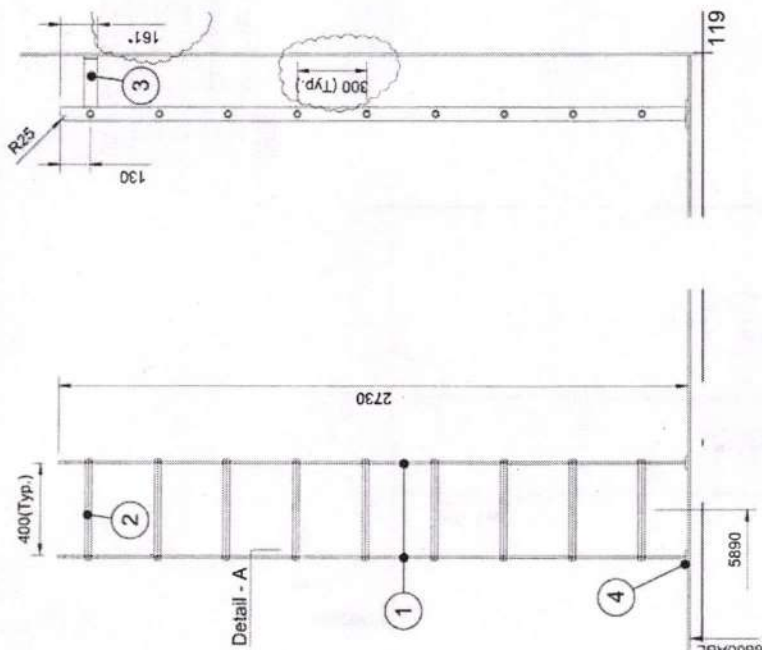
8141-4009-002

DESCRIPTION

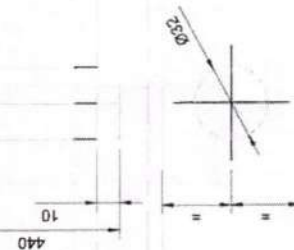
Access ladders PS & SB

SCALE	SIZE:	YARD NO.	VERSION:	SHEET:
1:20	A3	UY175	00	1-1
DRAWN BY:	DATE:	APPROVED BY:	DATE:	
YM	27-05-2025	JM	27-05-2025	

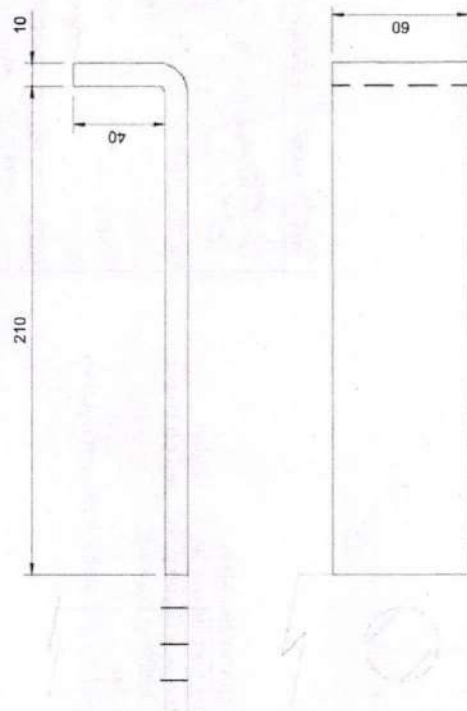
L25 - Access ladder entrance lashing store SB



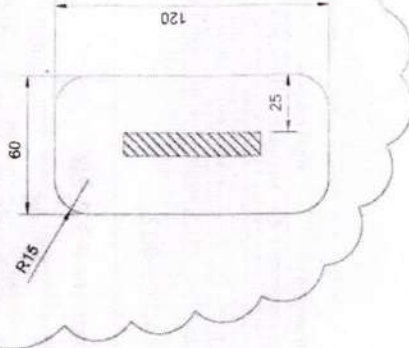
Detail A  
Scale 1:2



Mounting detail Pos.3  
Scale 1:2



Mounting detail Pos. 4  
Scale 1:2



**Note:**

- Material: Hot dip galvanized steel;
- Components of the part list are for **1** (one) ladder;
- \* - Dimension is not final, to be positioned on board;
- For position see Outfitting drawing;
- Reference drawings:  
 UY175-3141-Rev00- Ladders and stairs Arrangement.dwg;  
 UY175-3142-Rev01- Arrangement small hatches and ventilation openings.dwg.

Bill of material 8141-3027-002

L25 - Access ladder entrance lashing store SB

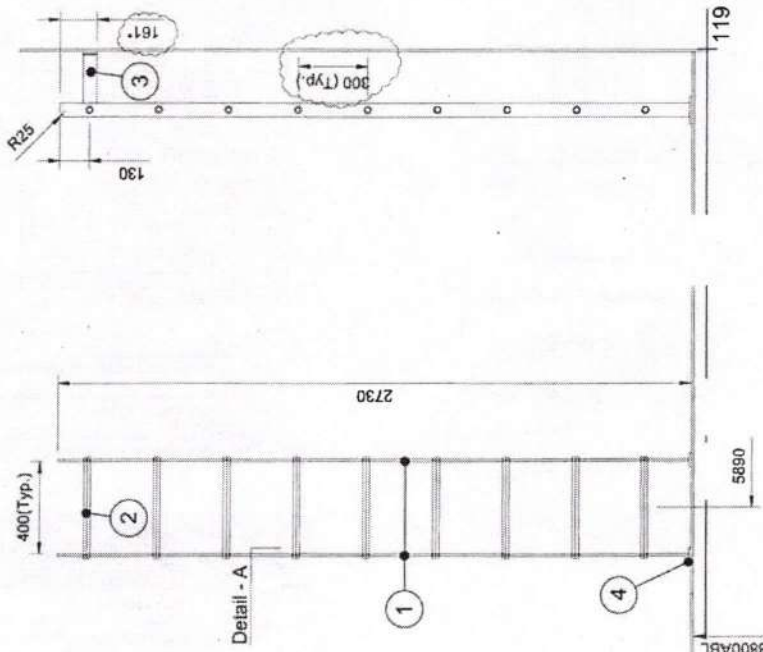
4	2 Flatbar 60x10	L=120
3	2 Flatbar 60x10	L=250
2	9 Squarebar 22	L=440
1	2 Flatbar 60x10	L=2720
No.	Pieces	Description
		Dimensions

01	16-06-2025	YM	MADE BY	APPROVED BY	JM	Updated acc. Yard comments
REV	DATE					DESCRIPTION
 <p><b>CONOSHIP</b> INTERNATIONAL</p>						
<p><b>COPYRIGHT CONOSHIP INTERNATIONAL B.V. 2009</b>  All rights reserved. This document or any part thereof may not be made public,  reproduced, copied or otherwise reproduced or used in any form or by any means,  electronic or mechanical, including photocopying, recording, or by any information  storage and retrieval system, without prior written consent of Conoship International B.V.  identical, similar or derived designs, nor identical, similar or derived documents  and specifications, without prior written consent of Conoship International B.V.  P.O.Box 6029 -- GRONINGEN - THE NETHERLANDS</p>						
DRAWING NO.						
8141-3027-002						
DESCRIPTION						
L25 - Access ladder entrance lashing store SB						
SCALE	SIZE:	YARD NO.	VERSION:	SHEET:		
1:20	A3		UY175	01		
DRAWN BY:	DATE:	APPROVED BY:	DATE:	1-1		
YM	28-02-2025	JM	28-02-2025			

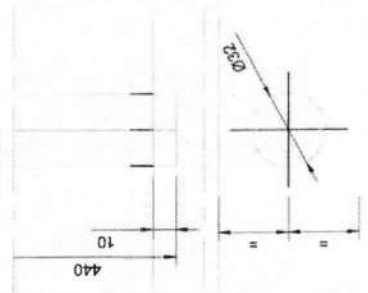


LADDER L26

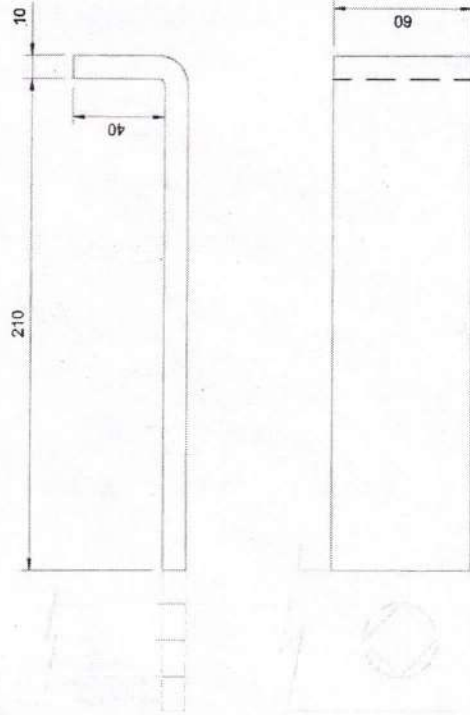
L26 - Access ladder entrance paint store PS



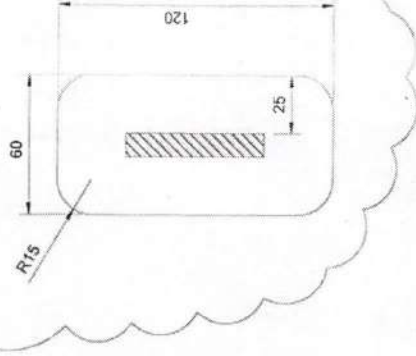
Detail A  
Scale 1:2



Mounting detail Pos.3  
Scale 1:2



Mounting detail Pos. 4  
Scale 1:2



Note:

- Material: Hot dip galvanized steel;
- Components of the part list are for 1 (one) ladder;
- \* - Dimension is not final, to be positioned on board;
- For position see Outfitting drawing;
- Reference drawings:  
UY175-3141-Rev00- Ladders and stairs Arrangement.dwg;  
UY175-3142-Rev01- Arrangement small hatches and ventilation openings.dwg.

Bill of material 8141-3029-002

L26 - Ladder entrance paint store PS

No.	Pieces	Description	Dimensions
4	2	Flatbar 60x10	L=120
3	2	Flatbar 60x10	L=250
2	9	Squarebar 22	L=440
1	2	Flatbar 60x10	L=2720

REV	DATE	MADE BY	APPROVED BY	Updated acc. Yard comments
-----	------	---------	-------------	----------------------------

**CONOSHIP**  
INTERNATIONAL

Copyright CONOSHIP INTERNATIONAL B.V. 2008  
All rights reserved. This document or any part thereof may not be reproduced or disclosed, copied or otherwise reproduced or used in any form or by any means, including, but not limited to, use hereof for the design and manufacturing of identical, similar or derived designs, nor identical, similar or derived documents, drawings, specifications, or other documents, without the prior written consent of CONOSHIP INTERNATIONAL, P.O. Box 8029 - GRONINGEN - THE NETHERLANDS

DRAWING NO.

8141-3029-002

DESCRIPTION

L26 - Access ladder entrance paint store PS

SCALE	SIZE	YARD NO.	VERSION	SHEET:
1:20	A3	UY175	01	1-1
DRAWN BY:	DATE:	APPROVED BY:	DATE:	
YM	28-02-2025	JM	28-02-2025	

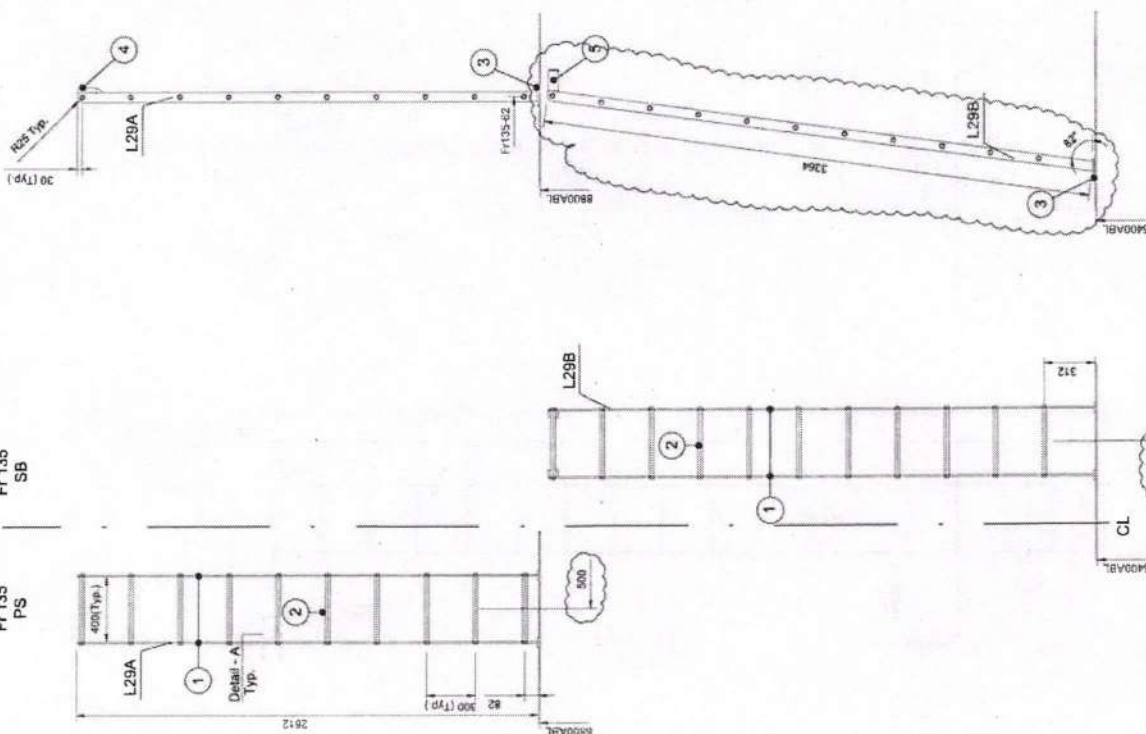




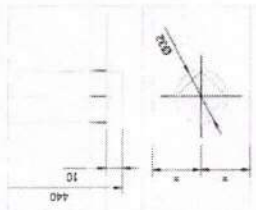
L29 - Access ladders to Forecastle deck

Fr 135  
SB

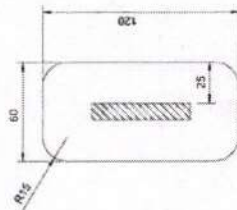
Fr 135  
PS



Detail A  
Scale 1:2



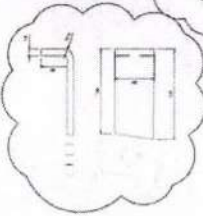
Mounting detail Pos 3  
Scale 1:2



Mounting detail Pos 4  
2x  
Scale 1:5



Mounting detail Pos 5  
2x  
Scale 1:5



Bill of material 8141-4013-001  
L29 - Access ladders to Forecastle deck

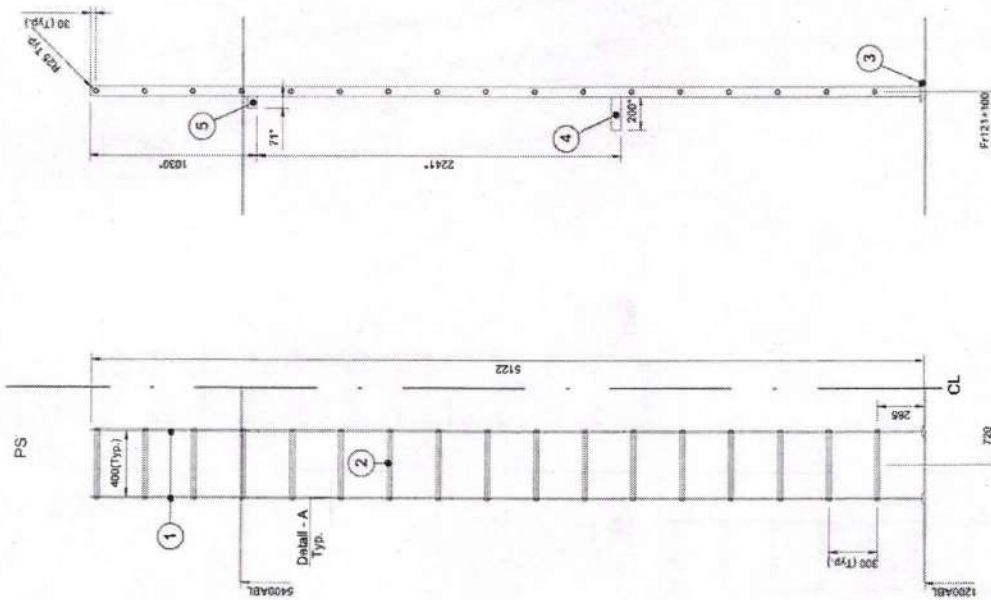
L29A		
4	2 Flatbar 30x10	L=150
3	2 Flatbar 60x10	L=120
2	10 Squarebar 22	L=440
1	2 Flatbar 60x10	L=2812
L29B		
5	2 Flatbar 60x10	L=176
3	2 Flatbar 60x10	L=120
2	11 Squarebar 22	L=440
1	2 Flatbar 60x10	L=3264
No.	Description	Dimensions

Note:

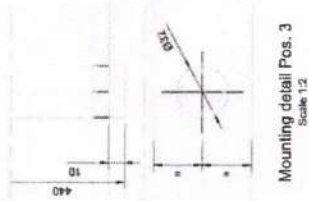
- Material: Hot dip galvanized steel;
- For position see Outfitting drawing;
- Reference drawings:  
UY175-3141-Rev00- Ladders and stairs Arrangement dwg.  
UY175-3142-Rev01- Arrangement small hatches and ventilation openings dwg.

01	02-07-25	YM	JM	Updated acc. Yard comments
REV	DATE	MADE BY	APPROVED BY	DESCRIPTION
<b>CONOSHIP</b> <small>CONOSHIP INTERNATIONAL B.V. 2009          All rights reserved. No part of this publication may be reproduced, stored in a retrieval system, or transmitted, in any form or by any means, electronic, mechanical, photocopying, recording, or by any information storage or retrieval system, without prior written permission from CONOSHIP INTERNATIONAL B.V.          P.O. Box 8828 - GEDINGEN - THE NETHERLANDS</small>				
DRAWING NO. 8141-4013-001				
DESCRIPTION L29 - Access ladders to Forecastle deck				
SCALE	SIZE	YARD NO.	VERSION	SHEET
1:20	A2	UY175	01	1-1
DRAWN BY	DATE	APPROVED BY	DATE	
YM	24-03-2025	JM	24-03-2025	

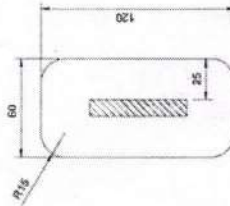
L30 - Access ladder to Upper Tweeneck deck



Detail A  
Scale 1:2



Mounting detail Pos. 3  
Scale 1:2



Bill of material 8141-2003-001

L30 - Access ladder to Upper Tweeneck deck

No.	Pieces	Description	Dimensions
5	2	Flatbar 60x10	L=71 - exact length to be positioned on board
4	2	Flatbar 60x10	L=200 - exact length to be positioned on
3	2	Flatbar 60x10	L=120
2	17	Squarebar 22	L=440
1	2	Flatbar 60x10	L=5122

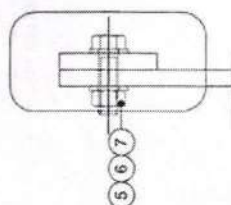
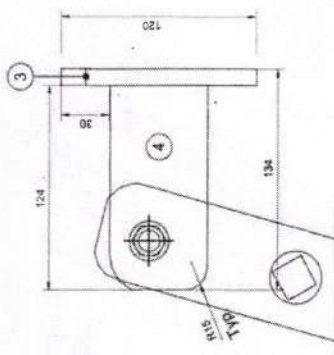
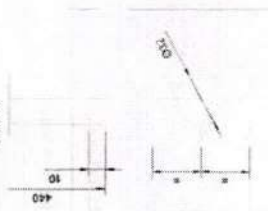
Note:

- Material: Hot dip galvanized steel;
- Dimension is not final, to be positioned on board;
- For position see Outfitting drawing;
- Reference drawings:  
UY175-3141-Rev00: Ladders and stairs Arrangement.dwg;  
UY175-3142-Rev01: Arrangement small hatches and ventilation openings.dwg.

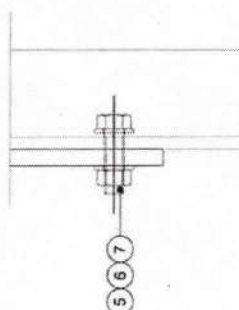
REV	DATE	MADE BY	APPROVED BY	DESCRIPTION
 COPYRIGHT CONOSHIP INTERNATIONAL B.V. 2009 All rights reserved. No part of this publication may be reproduced, stored in a retrieval system, or transmitted, in any form or by any means, electronic, mechanical, photocopying, recording, or by any information storage and retrieval system, without prior written permission from CONOSHIP INTERNATIONAL, P.O. Box 8929, 3720 JN, THE NETHERLANDS.				
DRAWING NO. 8141-2003-001				
DESCRIPTION L30 - Access ladder to Upper Tweeneck deck				
SCALE	SIZE	YARD NO.	VERSION	SHEET
1:20	A2	UY175	00	1-1
DRAWN BY:	DATE:	APPROVED BY:	DATE:	
JM	24-03-2025	JM	24-03-2025	



Detail A  
Scale 1:2



Mounting detail bottom  
Scale 1:2



Bill of material 8141-1004-001  
Access ladder Bow Thruster Room

7	4	Ref	Access	Order	Room
7	4	Ref			M12
6	8	Washer			M12
5	5	4 Bolt			M12x40
4	2	Flatbar 60x10			L-124
3	2	Flatbar 60x10			L-128
2	14	Squarebar 22			L-4,40
1	2	Flatbar 60x10			L-4,223
		Description			Dimensions

**Note:**

- Material: Hot dip galvanized steel;
- Components of the part list are for 1 (one) ladder;
- For position see Outfitting drawing;
- Reference drawings:  
 UY175-3141-Rev001- Ladders and stairs Arrangement.dwg;  
 UY175-3142-Rev01- Arrangement small hatches and ventilation openings.dwg;  
 8141-1004-003-Rev01 - Chequered floor in Bow thruster room.dwg.

REV	DATE	MADE BY	APPROVED BY	Updated acc. Yard comments
01	02-07-25	YM	JM	

**CONOSHIP**

DRAWING NO.

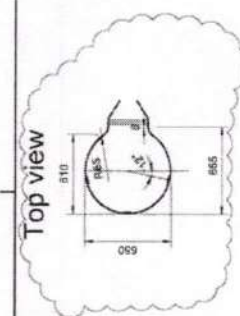
8141-1004-001

DESCRIPTION	DATE	AMOUNT	REMARKS
...	...	...	...

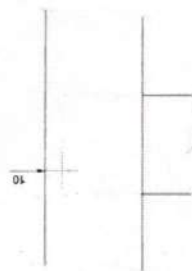
L31 - Access ladder Bow Thruster Room

SCALE	SIZE	YARD NO.	VERSION	SHEET
1:20	A2	UY175	01	1-1
DRAWN BY:	DATE:	APPROVED BY:	DATE:	
VM	24.03.2025		IM	

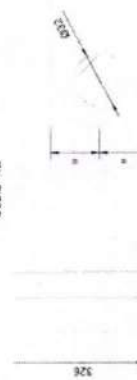
Aft view



Scale 1:2

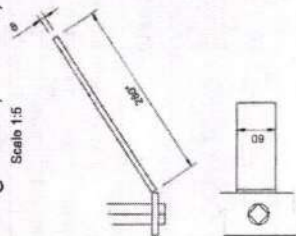


Scale 1:2



Mounting detail, Pos. 9; 7

LADDER L34



Bill of material 8141-6012-002

Ladder fore mast

--	--	--	--	--	--	--	--	--	--	--	--	--	--	--	--	--	--	--	--	--	--	--	--	--	--	--	--	--	--	--	--	--	--	--	--	--	--	--	--	--	--	--	--	--	--	--	--	--	--	--	--	--	--	--	--	--	--	--	--	--	--	--	--	--	--	--	--	--	--	--	--	--	--	--	--	--	--	--	--	--	--	--	--	--	--	--	--	--	--	--	--	--	--	--	--	--	--	--	--	--	--	--	--	--	--	--	--	--	--	--	--	--	--	--	--	--	--	--	--	--	--	--	--	--	--	--	--	--	--	--	--	--	--	--	--	--	--	--	--	--	--	--	--	--	--	--	--	--	--	--	--	--	--	--	--	--	--	--	--	--	--	--	--	--	--	--	--	--	--	--	--	--	--	--	--	--	--	--	--	--	--	--	--	--	--	--	--	--	--	--	--	--	--	--	--	--	--	--	--	--	--	--	--	--	--	--	--	--	--	--	--	--	--	--	--	--	--	--	--	--	--	--	--	--	--	--	--	--	--	--	--	--	--	--	--	--	--	--	--	--	--	--	--	--	--	--	--	--	--	--	--	--	--	--	--	--	--	--	--	--	--	--	--	--	--	--	--	--	--	--	--	--	--	--	--	--	--	--	--	--	--	--	--	--	--	--	--	--	--	--	--	--	--	--	--	--	--	--	--	--	--	--	--	--	--	--	--	--	--	--	--	--	--	--	--	--	--	--	--	--	--	--	--	--	--	--	--	--	--	--	--	--	--	--	--	--	--	--	--	--	--	--	--	--	--	--	--	--	--	--	--	--	--	--	--	--	--	--	--	--	--	--	--	--	--	--	--	--	--	--	--	--	--	--	--	--	--	--	--	--	--	--	--	--	--	--	--	--	--	--	--	--	--	--	--	--	--	--	--	--	--	--	--	--	--	--	--	--	--	--	--	--	--	--	--	--	--	--	--	--	--	--	--	--	--	--	--	--	--	--	--	--	--	--	--	--	--	--	--	--	--	--	--	--	--	--	--	--	--	--	--	--	--	--	--	--	--	--	--	--	--	--	--	--	--	--	--	--	--	--	--	--	--	--	--	--	--	--	--	--	--	--	--	--	--	--	--	--	--	--	--	--	--	--	--	--	--	--	--	--	--	--	--	--	--	--	--	--	--	--	--	--	--	--	--	--	--	--	--	--	--	--	--	--	--	--	--	--	--	--	--	--	--	--	--	--	--	--	--	--	--	--	--	--	--	--	--	--	--	--	--	--	--	--	--	--	--	--	--	--	--	--	--	--	--	--	--	--	--	--	--	--	--	--	--	--	--	--	--	--	--	--	--	--	--	--	--	--	--	--	--	--	--	--	--	--	--	--	--	--	--	--	--	--	--	--	--	--	--	--	--	--	--	--	--	--	--	--	--	--	--	--	--	--	--	--	--	--	--	--	--	--	--	--	--	--	--	--	--	--	--	--	--	--	--	--	--	--	--	--	--	--	--	--	--	--	--	--	--	--	--	--	--	--	--	--	--	--	--	--	--	--	--	--	--	--	--	--	--	--	--	--	--	--	--	--	--	--	--	--	--	--	--	--	--	--	--	--	--	--	--	--	--	--	--	--	--	--	--	--	--	--	--	--	--	--	--	--	--	--	--	--	--	--	--	--	--	--	--	--	--	--	--	--	--	--	--	--	--	--	--	--	--	--	--	--	--	--	--	--	--	--	--	--	--	--	--	--	--	--	--	--	--	--	--	--	--	--	--	--	--	--	--	--	--	--	--	--	--	--	--	--	--	--	--	--	--	--	--	--	--	--	--	--	--	--	--	--	--	--	--	--	--	--	--	--	--	--	--	--	--	--	--	--	--	--	--	--	--	--	--	--	--	--	--	--	--	--	--	--	--	--	--	--	--	--	--	--	--	--	--	--	--	--	--	--	--	--	--	--	--	--	--	--	--	--	--	--	--	--	--	--	--	--	--	--	--	--	--	--	--	--	--	--	--	--	--	--	--	--	--	--	--	--	--	--	--	--	--	--	--	--	--	--	--	--	--	--	--	--	--	--	--	--	--	--	--	--	--	--	--	--	--	--	--	--	--	--	--	--	--	--	--	--	--	--	--	--	--	--	--	--	--	--	--	--	--	--	--	--	--	--	--	--	--	--	--	--	--	--	--	--	--	--	--	--	--	--	--	--	--	--	--	--	--	--	--	--	--	--	--	--	--	--	--	--	--	--	--	--	--	--	--	--	--	--	--	--	--	--	--	--	--	--	--	--	--	--	--	--	--	--	--	--	--	--	--	--	--	--	--	--	--	--	--	--	--	--	--	--	--	--	--	--	--	--	--	--	--	--	--	--	--	--	--	--	--	--	--	--	--	--	--	--	--	--	--	--	--	--	--	--	--	--	--	--	--	--	--	--	--	--	--	--	--	--	--	--	--	--	--	--	--	--	--	--	--	--	--	--	--	--	--	--	--	--	--	--	--	--	--	--	--	--	--	--	--	--	--	--	--	--	--	--	--	--	--	--	--	--	--	--	--	--	--	--	--	--	--	--	--	--	--	--	--	--	--	--	--	--	--	--	--	--	--	--	--	--	--	--	--	--	--	--	--	--	--	--	--	--	--	--	--	--	--	--	--	--	--	--	--	--	--	--	--	--	--	--	--	--	--	--	--	--	--	--	--	--	--	--	--	--	--	--	--	--	--	--	--	--	--	--	--	--	--	--	--	--	--	--	--	--	--	--	--	--	--	--	--	--	--	--	--	--	--	--	--	--	--	--	--	--	--	--	--	--	--	--	--	--	--	--	--	--	--	--	--	--	--	--	--	--	--	--	--	--	--	--	--	--	--	--	--	--	--	--	--	--	--	--	--	--	--	--	--	--	--	--	--	--	--	--	--	--	--	--	--	--	--	--	--	--	--	--	--	--	--	--	--	--	--	--	--	--	--	--	--	--	--	--	--	--	--	--	--	--	--	--	--	--	--	--	--	--	--	--	--	--	--	--	--	--	--	--	--	--	--	--	--	--	--	--	--	--	--	--	--	--	--	--	--	--	--	--	--	--	--	--	--	--	--	--	--	--	--	--	--	--	--	--	--	--	--	--	--	--	--	--	--	--	--	--	--	--	--	--	--	--	--	--	--	--	--	--	--	--	--	--	--	--	--	--	--	--	--	--	--	--	--	--	--	--	--	--	--	--	--	--	--	--	--	--	--	--	--	--	--	--	--	--	--	--	--	--	--	--	--	--	--	--	--	--	--	--	--	--	--	--	--	--	--	--	--	--	--	--	--	--	--	--	--	--	--	--	--	--	--	--	--	--	--	--	--	--	--	--	--	--	--	--	--	--	--	--	--	--	--	--	--	--	--	--	--	--	--	--	--	--	--	--	--	--	--	--	--	--	--	--	--	--	--	--	--	--	--	--	--	--	--	--	--	--	--	--	--	--	--	--	--	--	--	--	--	--	--	--	--	--	--	--	--	--	--	--	--	--	--	--	--	--	--	--	--	--	--	--	--	--	--	--	--	--	--	--	--	--	--	--	--	--	--	--	--	--	--	--	--	--	--	--	--	--	--	--	--	--	--	--	--	--	--	--	--	--	--	--	--	--	--	--	--	--	--	--	--	--	--	--	--	--	--

\*. Pos. 9 to be welded to pipe Ø 114,3x6,02, L=255; Pos. 7 to be welded to pipe Ø 60,3x3,91, L=285;  
Ladder and cage to be galvanized;  
For position see Outfitting drawing;  
Reference drawings: 8141-3025-001-Rev00- Fore mast arrangement.dwg

01	10-07-25	YM	MADE BY	JM	Updated acc. Van's remarks
REV	DATE		APPROVED BY		DESCRIPTION
					
<p align="center"><b>COPYRIGHT CONOSHIP INTERNATIONAL B.V. 2003</b></p> <p>             All rights reserved. The document or any part thereof may not be re-used publicly without the written permission of CONOSHIP INTERNATIONAL. The use of this document for any other purpose than the intended one is prohibited. Any use of this document without the written permission of CONOSHIP INTERNATIONAL is prohibited.         </p> <p align="center">             P.O. BOX 6828 - GRONINGEN - THE NETHERLANDS              TEL. 0031 (0)50 623 1234 FAX 0031 (0)50 623 1235              E-MAIL: <a href="mailto:info@conoship.nl">info@conoship.nl</a> <a href="http://www.conoship.nl">www.conoship.nl</a> </p>					
DRAWING NO. 8141-4012-002					
DESCRIPTION					
Ladder fore mast					
SCALE	1:25	SIZE	A2	VARD NO.	UTYTS
DRAWN BY	VM	DATE	24-03-2025	APPROVED BY	DATE
					24-03-2025
				VERSION	01
				SHEET:	1-1

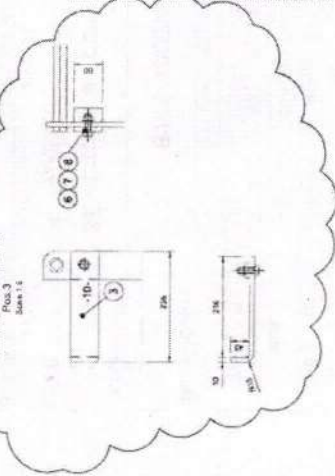


Frame 28  
Access ladders

PS

SB

Mounting detail L48-L49  
Pos. 3  
Scale 1:4



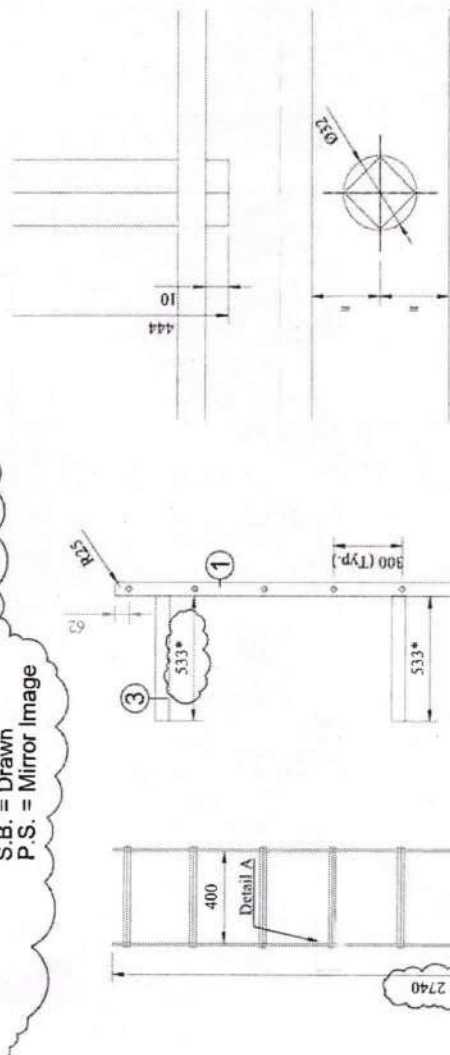
Bill of material 8141-5009-001											
Access ladders											
L764											
1	1	6	1	1	1	1	1	1	1	1	1
2	2	1	1	1	1	1	1	1	1	1	1
3	3	1	1	1	1	1	1	1	1	1	1
4	4	1	1	1	1	1	1	1	1	1	1
5	5	1	1	1	1	1	1	1	1	1	1
6	6	1	1	1	1	1	1	1	1	1	1
7	7	1	1	1	1	1	1	1	1	1	1
8	8	1	1	1	1	1	1	1	1	1	1
9	9	1	1	1	1	1	1	1	1	1	1
10	10	1	1	1	1	1	1	1	1	1	1
11	11	1	1	1	1	1	1	1	1	1	1
12	12	1	1	1	1	1	1	1	1	1	1
13	13	1	1	1	1	1	1	1	1	1	1
14	14	1	1	1	1	1	1	1	1	1	1
15	15	1	1	1	1	1	1	1	1	1	1
16	16	1	1	1	1	1	1	1	1	1	1
17	17	1	1	1	1	1	1	1	1	1	1
18	18	1	1	1	1	1	1	1	1	1	1
19	19	1	1	1	1	1	1	1	1	1	1
20	20	1	1	1	1	1	1	1	1	1	1
21	21	1	1	1	1	1	1	1	1	1	1
22	22	1	1	1	1	1	1	1	1	1	1
23	23	1	1	1	1	1	1	1	1	1	1
24	24	1	1	1	1	1	1	1	1	1	1
25	25	1	1	1	1	1	1	1	1	1	1
26	26	1	1	1	1	1	1	1	1	1	1
27	27	1	1	1	1	1	1	1	1	1	1
28	28	1	1	1	1	1	1	1	1	1	1
29	29	1	1	1	1	1	1	1	1	1	1
30	30	1	1	1	1	1	1	1	1	1	1
31	31	1	1	1	1	1	1	1	1	1	1
32	32	1	1	1	1	1	1	1	1	1	1
33	33	1	1	1	1	1	1	1	1	1	1
34	34	1	1	1	1	1	1	1	1	1	1
35	35	1	1	1	1	1	1	1	1	1	1
36	36	1	1	1	1	1	1	1	1	1	1
37	37	1	1	1	1	1	1	1	1	1	1
38	38	1	1	1	1	1	1	1	1	1	1
39	39	1	1	1	1	1	1	1	1	1	1
40	40	1	1	1	1	1	1	1	1	1	1
41	41	1	1	1	1	1	1	1	1	1	1
42	42	1	1	1	1	1	1	1	1	1	1
43	43	1	1	1	1	1	1	1	1	1	1
44	44	1	1	1	1	1	1	1	1	1	1
45	45	1	1	1	1	1	1	1	1	1	1
46	46	1	1	1	1	1	1	1	1	1	1
47	47	1	1	1	1	1	1	1	1	1	1
48	48	1	1	1	1	1	1	1	1	1	1
49	49	1	1	1	1	1	1	1	1	1	1
50	50	1	1	1	1	1	1	1	1	1	1
51	51	1	1	1	1	1	1	1	1	1	1
52	52	1	1	1	1	1	1	1	1	1	1
53	53	1	1	1	1	1	1	1	1	1	1
54	54	1	1	1	1	1	1	1	1	1	1
55	55	1	1	1	1	1	1	1	1	1	1
56	56	1	1	1	1	1	1	1	1	1	1
57	57	1	1	1	1	1	1	1	1	1	1
58	58	1	1	1	1	1	1	1	1	1	1
59	59	1	1	1	1	1	1	1	1	1	1
60	60	1	1	1	1	1	1	1	1	1	1
61	61	1	1	1	1	1	1	1	1	1	1
62	62	1	1	1	1	1	1	1	1	1	1
63	63	1	1	1	1	1	1	1	1	1	1
64	64	1	1	1	1	1	1	1	1	1	1
65	65	1	1	1	1	1	1	1	1	1	1
66	66	1	1	1	1	1	1	1	1	1	1
67	67	1	1	1	1	1	1	1	1	1	1
68	68	1	1	1	1	1	1	1	1	1	1
69	69	1	1	1	1	1	1	1	1	1	1
70	70	1	1	1	1	1	1	1	1	1	1
71	71	1	1	1	1	1	1	1	1	1	1
72	72	1	1	1	1	1	1	1	1	1	1
73	73	1	1	1	1	1	1	1	1	1	1
74	74	1	1	1	1	1	1	1	1	1	1
75	75	1	1	1	1	1	1	1	1	1	1
76	76	1	1	1	1	1	1	1	1	1	1
77	77	1	1	1	1	1	1	1	1	1	1
78	78	1	1	1	1	1	1	1	1	1	1
79	79	1	1	1	1	1	1	1	1	1	1
80	80	1	1	1	1	1	1	1	1	1	1
81	81	1	1	1	1	1	1	1	1	1	1
82	82	1	1	1	1	1	1	1	1	1	1
83	83	1	1	1	1	1	1	1	1	1	1
84	84	1	1	1	1	1	1	1	1	1	1
85	85	1	1	1	1	1	1	1	1	1	1
86	86	1	1	1	1	1	1	1	1	1	1
87	87	1	1	1	1	1	1	1	1	1	1
88	88	1	1	1	1	1	1	1	1	1	1
89	89	1	1	1	1	1	1	1	1	1	1
90	90	1	1	1	1	1	1	1	1	1	1
91	91	1	1	1	1	1	1	1	1	1	1
92	92	1	1	1	1	1	1	1	1	1	1
93	93	1	1	1	1	1	1	1	1	1	1
94	94	1	1	1	1	1	1	1	1	1	1
95	95	1	1	1	1	1	1	1	1	1	1
96	96	1	1	1	1	1	1	1	1	1	1
97	97	1	1	1	1	1	1	1	1	1	1
98	98	1	1	1	1	1	1	1	1	1	1
99	99	1	1	1	1	1	1	1	1	1	1
100	100	1	1	1	1	1	1	1	1	1	1

L37 - Coaming ladder Fr 33-34  
Apply to Fr 64-65; Fr 104-105  
S.B. = Drawn  
P.S. = Mirror Image

Detail A  
Scale 1:2

Mounting detail Pos. 3  
Scale 1:5

LADDER L37



Bill of material 8141-1003-006

Ladders access coaming

No	Pieces	Description	Dimensions
4	8	Flatbar 60x10	L=120
3	2	Flatbar 60x10	L=533*
2	9	Squarebar 22	L=440
1	2	Flatbar 60x10	L=2730

Note:

- Material: Hot dip galvanized steel;
- Make 6x;
- Position list components are for 1 ladder;
- \* - Dimension is not final, to be positioned on board;
- For position see outfitting drawing;

Reference drawing:

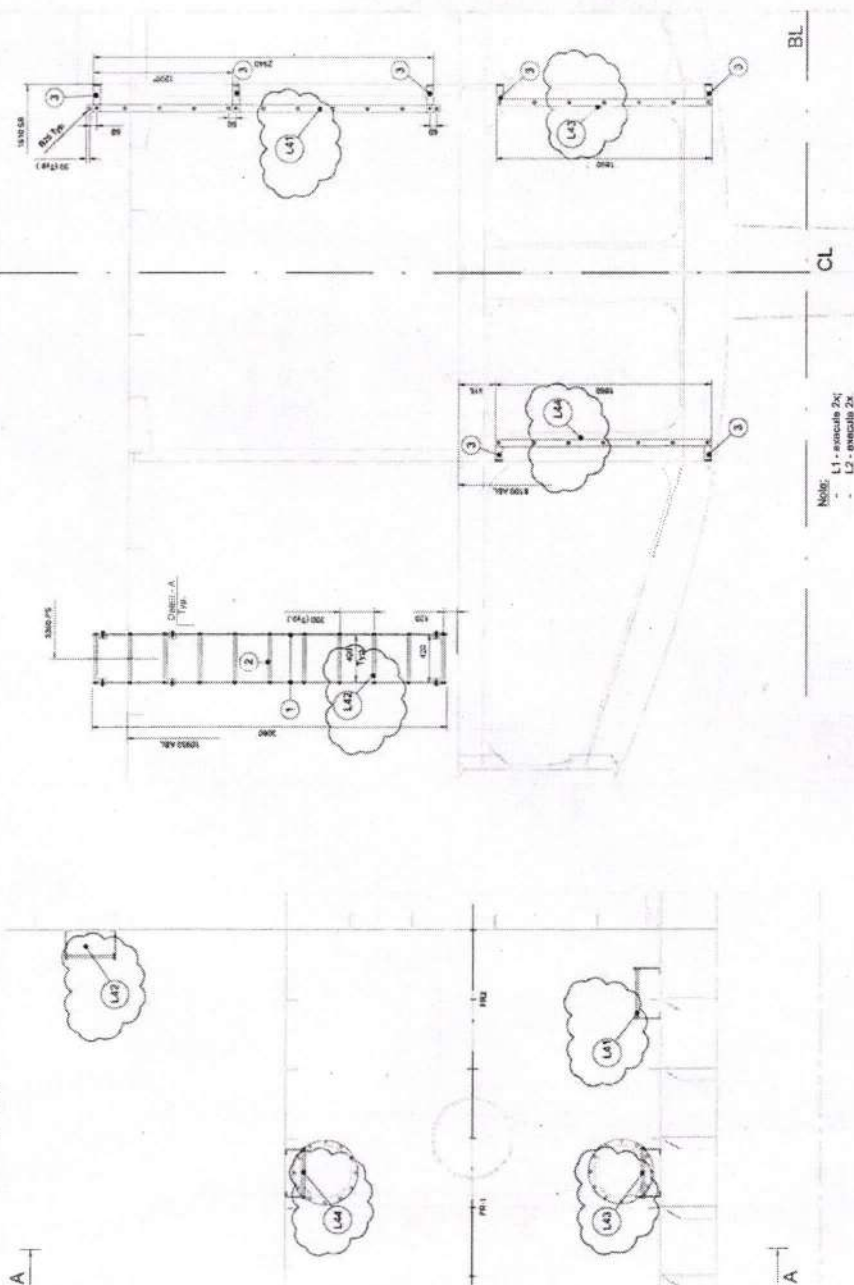
- UY475-3141-Rev00- Ladders and Stairs arrangement.dwg;
- 8140-3033-004-Rev00 Upper walkway.dwg.

REV	16-06-2025	YM	JM	Updated acc.	Yard comments
01					
<div> <div> <div>CONOSHIP</div> <div>INTERNATIONAL</div> </div> <div> <div>Copyright CONOSHIP INTERNATIONAL B.V. 2009</div> <div>All rights reserved. This document or its contents may not be made public or disclosed, copied or otherwise reproduced or used in any form or by any means, including, but not limited to, use hereof for the design and manufacturing of identical, similar or derived designs, nor identical, similar or derived documents or drawings, without the prior written consent of CONOSHIP INTERNATIONAL. P.O. Box 6029 - GRONINGEN - THE NETHERLANDS</div> </div> </div>					
DRAWING NO. 8141-1003-006					
DESCRIPTION L37 - Ladders access coaming					
SCALE	1:20	SIZE	A3	YARD NO.	UY175
DRAWN BY:	YM	DATE:	06-02-2025	APPROVED BY:	PM
					SHEET: 1-1



## LADDERS L41 L42 L43 L44

## Section A-A

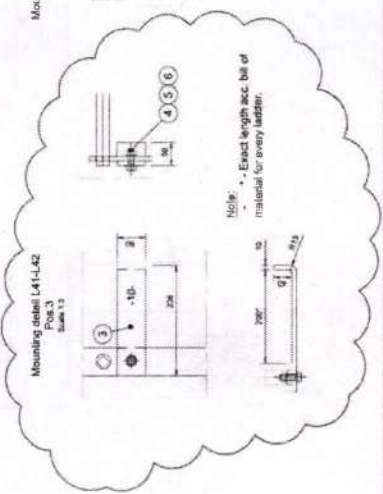
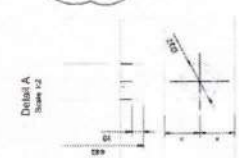
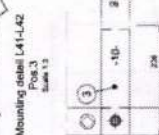
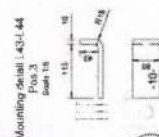


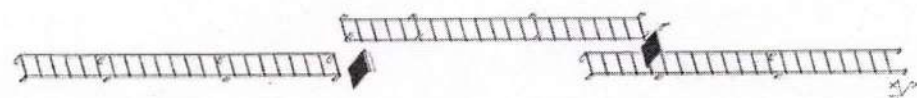
	1	2	3	4	5	6	7	8	9	10	11	12	13	14	15	16	17	18	19	20	21	22	23	24	25	26	27	28	29	30	31	32	33	34	35	36	37	38	39	40	41	42	43	44	45	46	47	48	49	50	51	52	53	54	55	56	57	58	59	60	61	62	63	64	65	66	67	68	69	70	71	72	73	74	75	76	77	78	79	80	81	82	83	84	85	86	87	88	89	90	91	92	93	94	95	96	97	98	99	100
1	1	2	3	4	5	6	7	8	9	10	11	12	13	14	15	16	17	18	19	20	21	22	23	24	25	26	27	28	29	30	31	32	33	34	35	36	37	38	39	40	41	42	43	44	45	46	47	48	49	50	51	52	53	54	55	56	57	58	59	60	61	62	63	64	65	66	67	68	69	70	71	72	73	74	75	76	77	78	79	80	81	82	83	84	85	86	87	88	89	90	91	92	93	94	95	96	97	98	99	100

**Note:**

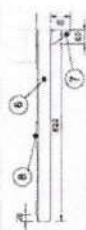
- Material: Hot dip galvanized steel.
- For position see Drafting drawing.
- Dimension is not ~~not~~ to be positioned on board.
- Bill of material for L41-L3, L43, L43-2 excycle 2 times.
- Reference drawings:

UV175-3141-Rev03- Ladders and stairs Arrangement dwg:  
 UV175-3142-Rev01- Arrangement small hatches and  
 ventilation openings dwg.

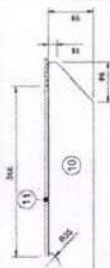
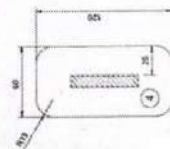
[illegible]



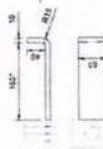
View Section A-A  
Bufile's Incubator  
Scale: 1:10



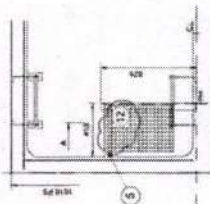
View Section B-B  
without grating

Moulding detail: Pos. 4  
Scale 1:2

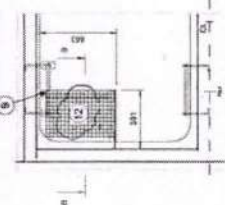
Mounting detail Pos 3



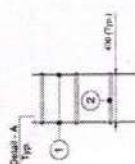
Top View on P1 10950 ABL  
Scale 1:20



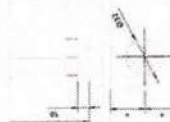
Top view on P2 16550 ABL



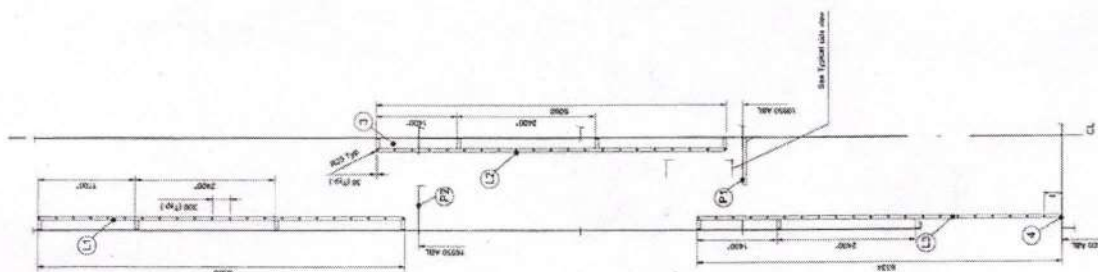
Typical side view on ladder:



### Outfall A



Frame view  
3+200  
Scale 1:40

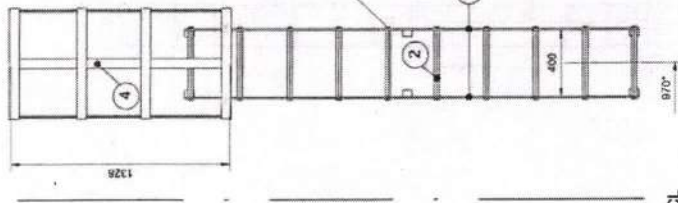
[illegible]

**Notes:**

- Complete steel platforms, grailings and ladders to be galvanneal.
- Additional brackers for platform to be chosen by Vendor.
- For position see Detailing drawings.
- Dimension is not final, to be positioned on board.
- Bill of material for 3 ladders, grailings and platforms.
- Reference drawings:
- JY 175-3-41-Rav00. Ladders and stairs Arrangement dwg

14	10-27-25	TIME	MADE BY		APPROVED BY	RECEIVED	DATE
REV	DATE						
							
<p>8141-7001-003</p> <p>Access ladders Furnal</p>							
SCALE	1:25	DATE	1:25	DATE	1:25	DATE	1:25
SCALE	1:25	DATE	1:25	DATE	1:25	DATE	1:25

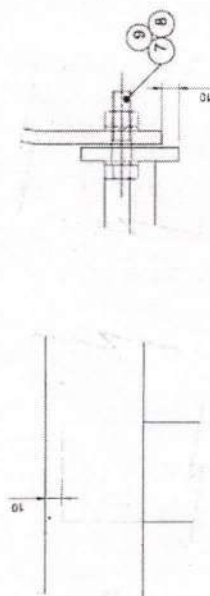
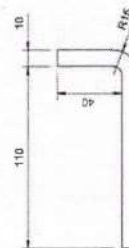




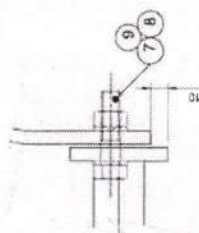
Scale 1:10



Scale 1:2



Scale 1:2

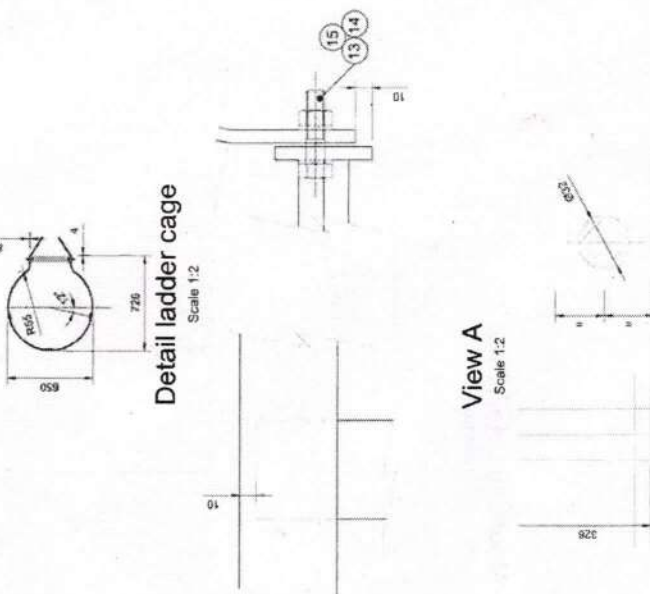


Scale 1:2

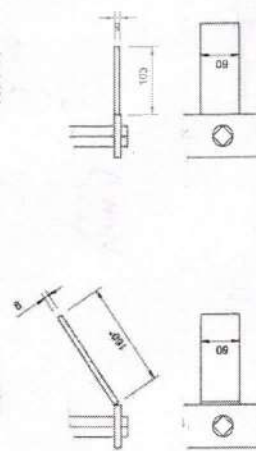
						Length	Top Deck
	9	2 Bolt				M12x40	
	8	4 Spring Washer				M12	
	7	2 Nut				M12	
	6	6 Flatbar 60x8					
	5	4 Flatbar 60x8				L=320	
	4	3 Flatbar 60x8				L=2000	
	3	6 Flatbar 60x10				L=1328	
	2	10 Squarebar 22				L=120	
	1	2 Flatbar 60x10				L=440	
		Description				L=2169	Dimensions

\* - preliminary dimensions, to be executed on board;  
Ladder and cage to be hot dipped galvanized;  
For position see Outfitting drawing;  
Reference drawings: UY175-3141-Rev00- Ladders and  
stairs Arrangement.dwg.

REV	DATE	MADE BY	APPROVED BY	DESCRIPTION
				<p><b>8141-7004-001</b></p> <p><b>Access Ladder Top deck</b></p>
<p>As rights reserved this document or any part thereof may not be re-used public or private without the written permission of CONOSHIP INTERNATIONAL. All rights are reserved. It shall be limited to what is covered by this design and product including all drawings, specifications, and other documents, without other written consent of CONOSHIP INTERNATIONAL B.V. P.O. BOX 8799 - GRONINGEN - THE NETHERLANDS</p>				
DRAWING NO.		SHEET 1		
SCALE	SIZE	VARIED NO.	VERSION	UO
1:20	A2	U1Y15		
DRAWN BY:	DATE	APPROVED BY:	DATE	
VM	24.03.2005			24.03.2005




Mounting detail,  
Pos. 11  
Scale 1:5



Note:

- \* - Pos. 11 to be welded to pipe Ø 219,1x6.35, L=180; Pos. 10 to be welded to plate s5, L=103;
- Ladder and cage to be galvanized;
- For position see Outfitting drawing;
- Reference drawings: 8141-7001-001-Rev00-Alt mast arrangement.dwg

Bill of material 8141-7001-002		Ladder aft mast	
15	14	Belit	M12x40
14	28	Spring Washer	M12
13	14	Nut	M12
12	8	Flatbar 60x8	L=103
11	4	Flatbar 60x8	L=160
10	7	Flatbar 60x8	L=194.2
9	1	Flatbar 60x8	L=172
8	1	Flatbar 60x8	L=267.3
7	1	Flatbar 60x8	L=180.2
6	1	Flatbar 60x8	L=1217
5	1	Flatbar 60x8	L=871
4	1	Flatbar 60x8	L=5739
3	2	Flatbar 30x10	L=85
2	27	Squarebar 22	L=340
1	2	Flatbar 65x10	L=812.4
No.	Pieces	Descriptions	Dimensions

REV	DATE	MADE BY	APPROVED BY	DESCRIPTION
				<p> <b>8141-7001-002</b>  <b>Ladder aft mast</b> </p>
<p> <b>DRAWING NO.</b> </p>				
<p> <b>DESCRIPTION</b> </p>				
SCALE	SIZE	YARD NO.	VERSION:	SHEET:
1:25	A2	UY175	01	1-1
DRAWN BY:	DATE	APPROVED BY:	DATE	
YM	24-03-2025	JMF	24-03-2025	



SL NO	Description	Compliance by Supplier (YES/NO)
		In case of non-compliance, please provide remarks.
1	Tenderers are to carefully go through the terms and conditions and the technical specification of the items for which offers are called for. Tenderers have to adhere to above and supply full technical scope of items along with compliance of commercial conditions. UCSL have full right upon deviations, if any, including rejecting the partial scope/ complied offers.	
2	Offers are to be furnished in duplicate and should be free from overwriting. Corrections and additions, if any, must be attested. In the case of E-tender offers shall be submitted only through UCSL E- procurement portal. Incomplete/ambiguous/conditional offers are likely to be rejected.	
3	Technical checklist, if applicable and current general terms & conditions of enquiry duly filled and signed and technical specifications of items offered (refer clause 5), should be submitted along with part-1 techno-commercial bid in the case of two-bid tenders and along with the bid documents in the case of single bid. Non receipt of the document may lead to rejection of offers. In the case of E-tender filling-up of GTC check list in the portal itself is sufficient.	
4	Spare/Tool requirements to be confirmed, if applicable i) Spare parts shall be furnished in accordance with the Class recommendations and manufacturers standard ii) The same shall be included in offered costs and shall be a part of L1 evaluation.	
5	Following Certificates/documents is to be submitted for the item in the event of an order: <b>a. For certificates and documents Refer PTS -175-039-R1, Clause No : 4 Supplying documents ( Page no. 4).</b>	
6	<b>SPECIFICATIONS: -</b> a) Manufacturer's name, their trade mark and brand, if any, should invariably be mentioned and illustrative leaflets giving technical particulars (technical details of items offered including technical literature) etc., should be attached to the offer. b) Materials offered shall confirm to UCSL specifications & Drawings. <b>Refer PTS-175-039-R1, Clause No : 3 Conditions of supply (Page no: 3)</b> Note: Notwithstanding any omission in this specification, all items/ features required as per class rules/ statutory regulations, safe working and good ship building practice shall be included in the offer by the bidder c) Samples are to be supplied free of cost in the event of requirement by UCSL. The detailed working drawing, if called for, is also to be furnished for approval before commencement of manufacture.	
7	Packing materials should be eco-friendly.	
8	Supplier should follow the statutory requirements of product offered.	
9	Products supplied shall be non-toxic and harmless to health. In case of toxic materials, Materials Safety Data Sheet may be furnished along with the material.	
10	<b>COMMISSIONING &amp; SEATRIALS: - Service engineer assistance for 15 days(excluding travel days, Sundays) irrespective of number of engineers in 3 trips per shipset. Total 90 man-days (excluding travel days, Sundays) irrespective of number of engineers in 18 trips for all 6 ships to be included in scope and cost.</b> b) Cost considered to include all charges incurred for travel, lodging, food and local transport costs. c) Additional man-day rates to be indicated separately (all inclusive of cost for boarding, lodging and local transport etc.) for extension beyond agreed man-days. Additional man-days/trips only applicable after completion of 28 man-days & 12 trips as indicated in 9a for all the vessels together. d) Whether the applicable taxes in India shall be borne by UCSL/Supplier (In the case of foreign vendors). e) Income tax liability of non-resident service engineer based on his period of stay in India shall not be borne by UCSL f). The non-resident seller/service provider shall provide such documents that are necessitated by the Indian income tax laws so as to enable UCSL to comply with the provisions of Indian statute and for payments of income tax in India. Following documents shall be sought by UCSL in this regard (i) Certificate under 10 (F) (ii) Tax residency certificate (iii) The certification regarding the existence/non-existence of business connection or permanent establishment in India. (The above is only an indicative list)	
11	Taxes and duties, if any, payable extra are to be indicated in the price part for single bid and in techno commercial part and price part (in the case of 2 bid tender).	
12	<b>MSEs, Startups and Make in India</b> a) Local Suppliers (Make In India), MSME firms and Startups will be eligible for various Relaxations in pre-qualification criteria and Benefits as per the orders promulgated by Government of India. Bidders are advised to refer the details of various Benefits and Relaxation in pre-qualification criteria as published at CSL website (www.cochinshipyard.in) under the Tenders tab for further reference.	
	<b>Delivery Period:</b> a. Delivery time required for supplies should be indicated in the offer (including time frame for drawing preparation, class approvals, manufacture etc.) Please note, required date at UCSL are as follows: b. The supplier shall submit all the drawings for approval from UCSL within 15 days from the date of PO and UCSL has forward the drawing approval within 15 days thereafter.	



SL NO	Description	Compliance by Supplier (YES/NO)
		In case of non-compliance, please provide remarks.
13	<p><b>Material required date at UCSL as follows :</b></p> <p>UY 175 - On 30 September 2025</p> <p>UY 176 - On 15 November 2025</p> <p>UY 177 - On 12 February 2026</p> <p>UY 178 - On 12 May 2026</p> <p>UY 179 - On 12 August 2026</p> <p>UY 180 - On 12 November 2026</p> <p>UY 181 - On 12 February 2027</p> <p>UY 182 - On 12 May 2027</p>	
14	<b>SHIPMENT</b>	
	<p>a. Supplier shall intimate UCSL the readiness of the Equipment/ Machinery/ Components and Parts prior to fourteen days of shipment.</p> <p>b. A minimum 14 days free detention period is to be granted for clearance of the goods at Mangalore/Mumbai/Chennai-seaport, as applicable for full containers.</p>	
15	<b>PAYMENT TERMS:</b>	
	a. For equipment's with commissioning	
	<b>UCSL payment term is 80% along with 100% applicable taxes within 30 days from the date of receipt and acceptance of items at UCSL stores after inspection and balance 20% on satisfactory completion of commissioning certified by UCSL.</b>	
	b. For general items	
16	UCSL payment term is 100% within 30 days of receipt and acceptance of materials at UCSL stores after inspection.	
	c) Payment mode shall be Electronic Clearing System (ECS)/cheque /NEFT/ /LC/CAD/TT-as mutually agreed in line with above standard payment terms. Variations from standard terms, if any, shall be appropriately loaded for tender comparison purposes for arriving the lowest bid. Bank charges (including LC charges, if any) inside India will be to UCSL account and outside India to supplier's account (In the case of import shipments). The charges for LC amendment, if any, shall be borne by the parties by whom the same is attributed/ necessitated.	
	d) Normally advance payments are not encouraged. In case, if advance payment is sought, the same can be considered for a maximum of 10% order value only. Interest at the base rate of SBI (applicable on the date of price bid opening) + 1% for the amount of advance will be charged. In addition, Bank guarantee for equivalent amount of advance to cover the period till advance payment is adjusted to be furnished. (i.e till completion of supplies or for a period as specifically agreed + 90 days). In case interest as above is not agreeable to be paid, the same will be loaded on your quoted basic prices, for tender comparison purposes for arriving the lowest bid	
	e) For deviation in Payments terms from UCSL standard terms, if any, aforesaid interest will be loaded on quoted item prices, for tender comparison purposes for arriving lowest bid.	
	f) Part payment shall be considered only if specifically agreed against partial supplies.	
17	<b>Security Deposit/ Warrantee Bank Guarantee:</b>	
	a.i) The successful bidder shall remit a security deposit of 3% of the total order value (excluding taxes, duties) in the form of demand draft drawn in favor of Udupi Cochin Shipyard Ltd towards the satisfactory performance of the contract, if an order is placed on them. Alternatively, a Bank Guarantee equivalent to above % of the total order value (excluding taxes, duties) as per UCSL format from an International Bank as per approved list of banks available in CSL website (for overseas supplier) & Scheduled Indian bank for Indian supplier is to be submitted, if an order is placed towards satisfactory performance of the contract.	
	a.ii) The supplier shall also agree for 3% of total order value (excluding taxes and duties) as Bank guarantee towards the Guarantee clause	
	a.iii) The Bank Guarantee /DD as above should be initially valid till 90 days after completion of supplies in terms of SD and later revalidated (within the validity of initial BG) to cover the guarantee period mutually agreed plus 90 days. However, in the case of items where WBG is not applicable (as in 15.a.ii), the SD shall be valid for item delivery at yard plus 90 days. Fixed Deposit Receipt (for equivalent amount of Security Deposit/WBG required as per tender) in lieu of bank guarantee is also acceptable. Fixed Deposit Receipt shall be in the name of supplier with lien marked in favor of Udupi Cochin Shipyard Limited, Kochi.	
	a.iv) The above SD/WBG is required or applicable only when the total order value (excluding taxes and duties) is Rs.20lakhs and above (or equivalent foreign currency). In case supplier have quoted Rs.20 lakhs and above in tender and indicated that BG as not applicable in the check list, the clause 15b shall be considered for further process.	
	b) If the bidder is not agreeable to submission of SD/ warrantee bank guarantee as per UCSL general terms and conditions of enquiry, UCSL reserves the right to reject the offer at our discretion or 3% of total order value (excluding taxes and duties) will be added to the quoted price for tender comparison/ evaluation purpose on case-to-case basis for arriving the lowest bid.	
	However, in cases where total quoted value is less than 20 lakhs, (ie split order etc) and the order value of entire tendered items is more than Rs 20.0 lakhs, the aforesaid loading will be applied on individual items in following cases:	
	_____ The bidder has not quoted for entire tendered quantity	
	_____ UCSL has technically / commercially rejected a few items in the tender	
	c) SD to be submitted within 2 weeks of receipt of order from yard.	
	d) Format of bank guarantee along with enquiry to be agreed, in general	
	e) Mode of receipt of bank guarantee is strictly through SWIFT mode from supplier bank to UCSL designated bank (for overseas bidders)	
	<b>Risk Purchase:</b> If the supplier fails to supply the items ordered in good quality as per contract specification and fails to deliver within the delivery date or violate any of the terms and conditions of the purchase order, UCSL shall have the following rights.	
	a. To cancel the order partially or fully with 15 days, notice and to forfeit the security deposit, if any.	



SL NO	Description	Compliance by Supplier (YES/NO)
		In case of non-compliance, please provide remarks.
	b. To impose tender holiday for the vendor for an appropriate period as decided by UCSL	
	c. To initiate alternate procurement action at the risk and cost of the supplier. This Risk Purchase clause is applicable only in the case of total order/ contract value (excluding taxes and duties) is Rs.20 lakhs and above (or equivalent foreign currency). Cases of value less than 20 lakhs will be addressed by serving appropriate caution/ warning notice to the firm.	
19	<b>Liquidated Damage:</b> In case of delay in supply of ordered materials beyond the stipulated delivery period, which is not attributable to UCSL, supplier is to pay Liquidated Damages (and not by way of penalty) a sum equivalent to ½% (half percent) per week or part of the week of the total basic price in case of Machinery/Equipment and of basic price of materials delayed in all other cases, subject to a maximum of 10% of the total basic price of undelivered material/10% of total basic price of machinery/equipment (Total basic price is the order value excluding freight, taxes, other charges etc.). Further, GST will be applicable upon LD and the same also will be deducted along with LD. However, LD applicability is without prejudice to UCSL right to terminate contract for delayed delivery or other actions as per clause 16.	
20	<b>Guarantee</b> a) The Items supplied shall be guaranteed for rated performance and against damage or failure due to faulty design, defective materials and bad workmanship for a period of 18 months from the date of delivery of the ship to Owners OR 30 months from the date of delivery of items to Yard, whichever is earlier. Should such damage/failure occurred within the Guarantee period, the Supplier should immediately rectify the failure by repair/replacement of any such part found to be under performing/ defective, at his own expenses.	
	b) Further to equipment guarantee, replaced/repared items shall be guaranteed for 12 months from date of repair/replacement.	
21	<b>Preservation &amp; Packing</b> 1. The preservation and packaging of the equipment to ensure that there is no damage and deterioration during transit and the period when the item is in storage in storhouse. 2. Duration of validity of preservation to be indicated. 3. Methodology for receipt inspection without affecting preservation (for main equipment and loose supplied items) is to be indicated by the OEM including any requirement for re-preservation 4. The procedure for re-preservation to be supplied by the firm. 5. Requirement of special provisions for storage and transportation to be specifically indicated. 6. Any consumables required for preservation/ re-preservation beyond a stipulated time period to be clearly indicated by OEM.	
22	<b>Jurisdiction:</b> All questions, disputes or difference arising under, out of, or in connection with contracts shall be subject to the exclusive jurisdiction of the Courts at Udupi, India. Alternate dispute resolution mechanism can also be considered.	
23	<b>Force Majeure condition:</b> Should failure in performance of the contract or part thereof arise from war insurrection, restraint imposed by Government, Act of Legislature or other Statutory Authority or illegal strike, riot, legal lock-out, flood, fire, explosion, act of God or any inevitable or unforeseen event beyond human control which may be construed as reasonable ground for an extension of time, UCSL may allow such additional time as is mutually agreed, to be justified by the circumstances of the case. The occurrence/cessation of force majeure situation is to be informed with documentary evidence within 15 days from the date of occurrence/ cessation.	
24	<b>Indian Agent:</b> a) Udupi Cochin Shipyard Ltd prefers to deal directly with the supplier. However, if the supplier appoints an Indian Agent to deal with Udupi Cochin Shipyard Ltd., the Agency commission payable by the supplier to such an agency shall be intimated.	
	b) If manufacturers affect the supply through Agents only, authorization in writing from manufacturers in favor of the Agent for supply to UCSL shall be furnished.	
	c) In case where an Agent participates a tender on behalf of a Foreign manufacturer Indian agent should submit specific authorization from the authorized person of foreign manufacturer.	
	d) In a tender, either the Indian agent on behalf of the Principal/ OEM or Principal/OEM itself can bid but both cannot bid simultaneously for the same item/ product in the same tender. If an agent submits bid on behalf of principal/OEM, the same agent shall not submit a bid on behalf of another principal/OEM in the same tender for the same item/product. Indian agents cannot represent more than one firm or quote on their behalf for any particular tender.	
	e) Clarifications, either technical or commercial, should be submitted to points specially asked for only. The opportunity so given should not be used for correcting/changing/amending the data/conditions already submitted with the tender	
	<b>PRICING:</b> a. Overseas firms should quote prices both on FOB and C&F Chennai Seaport terms. Indigenous bidders should quote prices for delivery of materials at UCSL stores. Insurance shall be to UCSL scope. In the case of E tender C&F price shall be quoted and the freight charges shall be indicated separately under header conditions as per the provision in the CSL e-tender portal.	
	b. Exchange rate variation will not be applicable and the prices shall be fixed for an order within validity period in the case of indigenous/ import orders.	
	c. Offer to be submitted in EUR/USD/INR currency Generally. Indian Firms shall quote in INR only.	
	d. Comparison of prices will be in INR only. All foreign currencies will be converted to INR for comparison and Exchange rate as on date of price bid opening shall be considered for arriving lowest bid	
	e. Prices should be valid for acceptance for a period of four months from the date of tender opening.	



SL NO	Description	Compliance by Supplier (YES/NO)
		In case of non-compliance, please provide remarks.
25	f. No enhancement of rate for whatsoever cause will be allowed once the offer is accepted and an order is placed. Withdrawal of the quotation after it is accepted or failure to make the supply within the stipulated delivery period, will entail cancellation of the order and forfeiture of Earnest Money Deposit/Security deposit, if any and/or risk purchase, without prejudice to other penal actions, including tender holiday after serving show cause notices, as deemed fit.	
	g. Conditional discounts, if any, will not be reckoned for tender evaluation/ comparison purpose. However, if the bidder becomes L1 at original offer, conditional discount shall also be considered.	
	h. Unpriced bid (price bid without price) duly signed is to be submitted along with techno-commercial offer in the price format, provided. Price should be quoted separately for each item shown in the format. In the event price bid is different from the unpriced format already submitted, yard reserves the right to reject the offer at our discretion without any further discussions. Details of optional items, if any, should be indicated under separate heading in the Techno commercial bid and the respective price details should also be given in the price bid. Combining of figures against more than one item and ambiguous clauses will lead to rejection of the bid.	
	i. If, in the price structure quoted for the required material/ item, there is discrepancy between the unit price and the total price (which is obtained by multiplying the unit price by the quantity), the unit price shall prevail and the total price corrected accordingly. If there is an error in a total corresponding to the addition or subtraction of subtotals, the subtotals shall prevail and the total shall be corrected. If there is a discrepancy between words and figures, amount in words of respective figures shall prevail. If the bidder does not agree to the observation of the UCSL, the tender is liable to be rejected and the same shall be intimated.	
	j. After submission of quotation/price offer no unsolicited correspondence will be entertained.	
	k. Udupi Cochin Shipyard Limited does not bind itself to accept the lowest or any tender but reserves to itself the right to reject any or all or a part of any tender at its discretion.	
	l. UCSL reserves the right to place order to the techno-commercially qualified lowest bidder in full or individual items to the respective lowest bidders in the tender (except in cases where basis of L1 arrival is declared specifically in enquiry). Also please refer loading applicable for split order of value less than 20 lakhs (Clause 15 b)	
	m. In the case of part quantity order, the quoted freight charges applicable for the entire quantity as per enquiry shall be apportioned and allocated.	
26	L1 computation shall be based on total cost of all items, including cost of spares as per tender & Class/certification charges, if any required (excluding GST/IGST). For all import consignments directly imported in UCSL's name/or on High Seas Sale agreement, customs duty is not applicable at import clearance. Customs clearance at Chennai port and transport till UCSL stores shall be to UCSL account.	
	<b>Integrity Pact:</b> As per Government of India (Central Vigilance Department), UCSL and the SUPPLIER have to sign an Integrity Pact for the high value contracts, for ensuring transparency, equity and competitiveness in public procurement. The Tenderer has to sign Pre-Contract Integrity Pact as per format enclosed and to submit along with your offer. The above is applicable when the total basic price is above Rs. 100.0 lakhs. (present limit)	
27	<b>Grievance Redressal Committee:</b> As an alternate dispute redressal or reconciliation mechanism (other than arbitration clause), Cochin Shipyard has constituted Grievance Redressal Committee. Currently following executives of the committee may be contacted for the settlement of disputes, if any, arising out of all contracts.	
	a) Mrs. Anjana KR, GM (Design)	
	b) Mr.Subramanian K K, Deputy General Manager (HR)	
	c) Mr. Shibu John, Deputy General Manager (Finance)	
28	<b>SUB CONTRACTING AND ASSIGNMENT</b> Supplier shall not contract with any subcontractor and/or vendor without the prior written consent of UCSL. Such consent shall not relieve the Supplier from any of his responsibilities and liabilities under the Purchase Order. In addition, Supplier shall ensure that the terms and conditions of any such contract shall comply with and correspond to the terms and conditions of the Purchase Order.	
	<b>General:</b> a. Prior to price bid opening, UCSL is at liberty to take the credit rating of bidders at our cost on case to case basis, and to include the same during the evaluation of the tender.	
29	b. Deviations, if any in the techno-commercial offer from that of the tender enquiry in any form should be clearly furnished in a separate document titled as "List of Deviations", failing which it will be presumed that all the terms and conditions are acceptable.	
	c. The techno-commercial part alone will be opened initially on the due date of tender. The price part will be opened only after evaluation of the Techno commercial part. Date of opening of the price part will be intimated to those firms whose Techno- commercial bids would be acceptable after the evaluation. Suppliers are allowed to depute their authorized representative to be present at the time of opening of Price Bid of their tender only. In case of E-Tender, suppliers shall not depute their representative to CSL. However techno-commercially qualified supplier can view the price details in CSL E-procurement portal after opening the price bid—	
30	<b>P.O:-</b> a. In the event supplier's offer leads to an agreement to effect supplies, a formal purchase order shall be issued by UCSL on the basis of agreed terms and conditions of tender.	
	b. Upon placement of order (by post or mail) the supplier shall submit the acknowledgement (ie: signed and stamped original/ scanned soft copy by mail) as a token of acceptance of order within 5 days. In case UCSL doesn't receive the above, it will be deemed as accepted.	
	c. Supplier shall submit monthly progress report on the ordering status of raw materials, construction progress of the items ordered by UCSL, supporting with photo evidence.	



SL NO	Description	Compliance by Supplier (YES/NO)
		In case of non-compliance, please provide remarks.
31	<b>SUPPLY:</b> - a) UCSL reserve the right to inspect the goods after receipt at UCSL store / prior to dispatch (by UCSL or UCSL authorized agency at yard cost). Short supply / Mismatch / Replacement of Defective items / those not meeting agreed / contractual specification/ Items failing during commissioning shall be sent on air freight/ DDP basis courier freight prepaid/delivered at UCSL store. The customs clearance charges of above shall be to supplier account.	
	b) Replacements during guarantee period to be sent on Duty and all taxes paid basis to location as required by yard/vessel owner with all expenses to supplier account.	
	c) Defective items, if any, after receipt shall be sent back on cost, carriage, handling and insurance prepaid basis including re-export (wherever desired by supplier) to be arranged by supplier. Defective items shall be returned after receipt of replacement item. Supplier shall replace all/ part of items as applicable, in case of rejection, within 4 weeks of reporting the defect, without any additional cost to UCSL. In case the defective materials are not taken back within the said period, UCSL reserves the right to dispose the same without further intimation.	
	d) The supplier shall compensate UCSL for loss on account of shortage in quantity and number of pieces received than that indicated in the bill of lading provided the UCSL's claim is rejected by the insurance due to any fault of supplier. Such claims, if any, shall be supported by recognized surveyors report. The supplier shall also compensate for losses, if any sustained by the UCSL due to defective packing and/or marking of the goods not in accordance with the terms of contract. The time limits for filing claims under clauses above shall be generally 180 days from the date of complete discharge of goods.	
32	UCSL reserves the right to alter, modify the scope of supply at its discretion and in consistent with the policy of the Government of India and statutory bodies under them as applicable to the contract from time to time.	
33	UCSL shall, at its own discretion and costs opt for obtaining credit information report on supplier's financial credentials through credit rating firms. The same shall also be considered as criteria for commercial evaluation. In the event supplier's credit rating is not at least satisfactory, offer will be summarily rejected.	
34	Public procurement policy as per order No. D.O. No. P-45021/2/2017-PP (BE-II) (E-1588) by Department for promotion of Industry and Internal Trade Ministry of Commerce & Industry is applicable for this tender	
35	UCSL reserves the right to commercially reject the offer if compliance is not issued to terms at Sl. No.14, 15, 16, 17 & 18 without any further clarification / notice / communication in this regard from M/s. Udupi Cochin Shipyard Ltd., even though the offer is technically acceptable.	
36	UCSL has an option of receiving 4 + 4 more similar projects within June 2024 and upon exercise of this option by owner yard will confirm the same quantity of item to supplier within June 2024 or earlier. Therefore the price offer shall consist the prices for current projects as well as the discounted prices applicable for these optional projects with validity to confirm the order till June 2024. However the L1 determination shall be purely based on current confirmed quantity.	
37	Restriction of bidders sharing land border with India vide Office memorandum dt 23.7.2020 Order - Public Procurement no 1 dt 23.7.2020, Order no 2 dt 23.7.2020 and Order no 3 dt 24.7.2020	
A	Requirement of registration	
1	Any bidder from a country which shares a land border with India will be eligible to bid in this tender only if the bidder is registered with competent authority as per C below. In works contracts, including turnkey contracts, contractors shall not be allowed to sub contract works to any contractor from a country which shares a land border with India unless such contractor is registered with Competent authority. Relevant certificate to be submitted by bidder from a country which shares land border with India except for bidders to which Govt of India has extended lines of Credit or in which Govt of India has development projects, along with the offer as proof of registration with competent authority, failing which the offer will not be considered. A certificate is to be submitted by the bidder for compliance with the order referred above along with tender documents for consideration of offer (Wordings are as per Clause below). If such certificate given by a bidder whose bid is accepted is found to be false, this would be a ground for immediate termination and further legal action in accordance with law.	
2	Wordings of certificate to be submitted along with tender documents for Works involving possibility of sub contracting	
3	I have read the clause regarding restrictions on procurement from a bidder of a country which shares a land border with India and on sub contracting to contractors from such countries. I certify that this bidder is not from such a country or if from such a country has been registered with the competent authority and will not subcontract any work to a contractor from such countries unless such contractor is registered with the competent authority. I hereby certify that this bidder fulfils all requirements in this regard and is eligible to be considered (Evidence of valid registration by the competent authority shall be attached wherever applicable)	
B	Validity of registration	
1	Registration should be valid at the time of submission of bids and at the time of acceptance of bids. In respect of supply otherwise than by tender, registration should be valid at the time of placement of order. If the bidder is validly registered at the time of acceptance /order placement, registration shall not be a relevant consideration during contract execution.	
C	Competent authority and Procedure for registration	
1	The competent authority for the purpose of registration under the order shall be Registration committee constituted by the Department of Promotion of Industry and Internal Trade (DPIIT). Details of the committee and procedure for registration and restrictions shall be as per Ann I of the Order - Public Procurement no 1 dt 23.7.2020 issued by Ministry of Finance, department of Expenditure.	
D	Definition of Bidder and Bidder from a country sharing land border with India	
1	Bidder is defined as any person or firm or company including any, member of a consortium or joint venture, every artificial, juridical person not falling in any of the descriptions of bidders stated hereinbefore, including any agency, branch or office controlled by such person, participating in a procurement process.	
	"Bidder from a country which shares a land border with India" for the purpose of this Order means:-	
	a) An entity incorporated, established or registered in such a country; or	
	b) A subsidiary of an entity incorporated, established or registered in such a country; or	



SL NO	Description	Compliance by Supplier (YES/NO)
		In case of non-compliance, please provide remarks.
2	c) An entity substantially controlled through entities incorporated, established or registered in such a country; or	
	d) An entity whose beneficial owner is situated in such a country; or	
	e) An Indian (or other) agent of such an entity; or	
	f) A natural person who is a citizen of such a country; or	
	g) A constitution or joint venture where any member of the consortium or joint venture falls under any of the above.	
3	Type of business entity	
	(Private Limited Company/ Public Limited Company/ Sole Proprietorship/ One Person Company/ Partnership/ Limited Liability Partnership/ Joint Venture/ Trust/ NGO)	
	In case of incorporated entity - to attach certificate of incorporation	
4	Beneficial Owners - as defined in the Department of Expenditure Order (Public Procurement No.1) issued vide No. F.No.6/18/2019-PPD dated 23rd July, 2020.	
	Details of all beneficial owners having entitlement of more than 01% of shares or capital or profit to be given, in the format as given in Annexure-I duly certified by practicing Chartered Account in India.	
38	<b>Preference to Make in India</b>	
	Purchase preference in accordance with Public procurement (Preference to Make in India Order - 2017) Order from Department of Promotion of Industry and Internal Trade P - 45021 /2/2017/- B.E -II dt ,4.6.2020 and as amended from time to time shall be applicable as per below	
	In the procurement of all goods/services/works in respect of which there is sufficient local capacity/local competition, only Class I Local suppliers shall be eligible to bid irrespective of purchase value	
	In the procurement of all goods/services /works which are not covered as above and with estimated value of purchase less than Rs 200.0 Crores, only Class I local suppliers along with Class II local suppliers shall be eligible to bid.	
39	<b>Purchase preferences for Class I local suppliers</b>	
A	In the procurement of goods/works covered under 2 above and which are divisible in nature, Class I local supplier shall be eligible for Purchase preference over Class II/Non local supplier as per following	
B	If L1 bid is not a Class I local supplier, 50% of the order quantity shall be awarded to L1. Thereafter the lowest bidder among Class I local supplier will be invited to match the L1 price for the remaining 50% quantity subject to Class I local supplier quoted price falling within 20% margin. Contract for that quantity shall be awarded to such Class I local supplier subject to matching L1 price. In case such lowest eligible Class I local supplier fails to match L1 price or accept less than offered quantity, next higher Class I local supplier within 20% margin shall be invited to match the L1 price for the remaining qty and so on. If some quantity is left uncovered on Class I local supplier, such balance quantity shall be ordered on L1 bidder.	
C	For procurements that are not divisible in nature and in procurement of services evaluated on price alone, Class I local supplier shall get purchase preference over Class II/Non local supplier as per below	
D	If L1 is not a Class I local supplier, lowest bidder among Class I local supplier will be invited to match L1 price subject to Class I local supplier quoted price falling within 20% of L1 price and contract will be awarded to such Class I local supplier, subject to matching L1 price. In case such lowest eligible Class I local supplier fails to match L1 price, procedure same as para 3 above will be opted. In case none of Class I local suppliers within 20% margin matches L1 price, contract shall be awarded to L1 bidder. The purchase preference as above will be only for Class I local supplier and Class II local supplier will not be eligible for any Purchase preference	
E	Local content requirement to categorize a supplier as Class I/Class II/Non local supplier shall be as per below. Definition of local content shall be as per order dt 4.6.2020 ie amount of value added in India which shall be the total value of the item procured (excluding net domestic indirect taxes) minus the value of import content in the item (including all customs duties) as a proportion of total value in percentage.	
F	Class I -Local content equal to or greater than 50%	
G	Class II-Local content greater than 20%, less than 50%	
H	Non local -Local content less than 20%	
40	<b>Declaration of local content</b>	
A	Class I local supplier /Class II local supplier at the time of tender shall indicate % of local content and provide self-certification that offered item shall meet the local content requirement for Class I/Class II as applicable including details of locations at which local value addition is made.	
B	In case of procurement for a value in excess of Rs 10.0 Crores Class I/Class II local supplier is to provide a certificate from statutory auditor/cost auditor (for companies) /practicing cost accountant/Chartered accountant (suppliers other than companies) indicating % of local content	
C	Verification of the Certificates issued by the bidder shall be carried out by CSL on random basis. False declarations will attract actions as stipulated in the order referred, including other actions as permissible by law.	
D	Exemption is applicable from provisions of order for purchases with estimated values less than Rs 5.0 lakhs	
E	Notwithstanding above, exemptions for meeting local content as per relevant Clause of order dt 4.6.2020 and as amended from time to time shall apply.	

Note: Statement striked out is not applicable.



PRICE BID FORMAT

Tender Enquiry No: UCSSL/MAT/PROJ/2024-25/1666  
Vessel/Project: UY 175-182

Tender Enquiry Date: 08.08.2025

SL. NO	Intend No	Materil Code	DESCRIPTION			Net Quantity	UOM	Currency	Unit Rate	Total Price
			LADDERS					INR	Per Vessel	(Unit rate x 8 Sets)
			Description & remarks	Deck Location	Qty per vessel					
1			VENT SUPPLY HATCH GALVANIZED, W=400, step 300	15300 - 11800	1 Nos/Vessel			INR		
2			VENT SUPPLY HATCH GALVANIZED, W=400, step 300	15300 - 11800	1 Nos/Vessel			INR		
3			T121 WB GALVANIZED, W=400, Step 300	8800-1200	1 Nos/Vessel			INR		
4			T122 WB GALVANIZED, W=400, Step 300	8800-1200	1 Nos/Vessel			INR		
5			T121 WB GALVANIZED, W=400, Step 300	8800-1200	1 Nos/Vessel			INR		
6			T122 WB GALVANIZED, W=400, Step 300	8800-1200	1 Nos/Vessel			INR		
7			T201 FO Black Steel, grit Blasted	8800-1200	1 Nos/Vessel			INR		
8			T202 FO Black Steel, grit Blasted	8800-1200	1 Nos/Vessel			INR		
9			T201 FO Black Steel, grit Blasted	8800-1200	1 Nos/Vessel			INR		
10			T202 FO Black Steel, grit Blasted	8800-1200	1 Nos/Vessel			INR		
11			T119 WB GALVANIZED, W=400, Step 300	8800-1200	1 Nos/Vessel			INR		
12			T120 WB GALVANIZED, W=400, Step 300	8800-1200	1 Nos/Vessel			INR		
13			T117 WB GALVANIZED, W=400, Step 300	8800-1200	1 Nos/Vessel			INR		
14			T118 WB GALVANIZED, W=400, Step 300	8800-1200	1 Nos/Vessel			INR		
15			T115 WB GALVANIZED, W=400, Step 300	8800-1200	1 Nos/Vessel			INR		
16			T116 WB GALVANIZED, W=400, Step 300	8800-1200	1 Nos/Vessel			INR		
17			T113 WB GALVANIZED, W=400, Step 300	8800-1200	1 Nos/Vessel			INR		
18			T114 WB GALVANIZED, W=400, Step 300	8800-1200	1 Nos/Vessel			INR		
19			T113 WB GALVANIZED, W=400, Step 300	8800-1200	1 Nos/Vessel			INR		
20			T114 WB GALVANIZED, W=400, Step 300	8800-1200	1 Nos/Vessel			INR		
21			T111 WB GALVANIZED, W=400, Step 300	8800-1200	1 Nos/Vessel			INR		
22			T112 WB GALVANIZED, W=400, Step 300	8800-1200	1 Nos/Vessel			INR		

SL. NO	Intend No	Materil Code	DESCRIPTION			Net Quantity	UOM	Currency	Unit Rate	Total Price
			LADDERS					INR	Per Vessel	(Unit rate x 8 Sets)
			Description & remarks	Deck Location	Qty per vessel					
23	1710002276	1100010362	FORECASTLE DECK GALVANIZED, W=400, Step 300	11700-13860	1 Nos/Vessel	8	SETS	INR		
24			FORECASTLE DECK GALVANIZED, W=400, Step 300	11700-13860	1 Nos/Vessel			INR		
25			LASHING STORE GALVANIZED, W=400, Step 300	10900-8800	1 Nos/Vessel			INR		
26			PAINT STORE GALVANIZED, W=400, Step 300	10900-8800	1 Nos/Vessel			INR		
27			HOLD VENT GALVANIZED, W=400, Step 300, platform*	8800-1200	2 Nos/Vessel			INR		
28			HOLD VENT GALVANIZED, W=400, Step 300, platform*	8800-1200	2 Nos/Vessel			INR		
29			FOREPEAK GALVANIZED, W=400, Step 300	11700-8100	2 Nos/Vessel			INR		
30			FOREPEAK GALVANIZED, W=400, Step 300	8100-1200	1 Nos/Vessel			INR		
31			BOW THRUSTER ROOM GALVANIZED, W=400, Step 300	6000-1200	1 Nos/Vessel			INR		
32			Hold Vent Access HOLD GALVANIZED, W=400, Step 300	11700-8100	1 Nos/Vessel			INR		
33			Hold Vent Access HOLD GALVANIZED, W=400, Step 300	11700-8100	1 Nos/Vessel			INR		
34			FORE MASTB GALVANIZED, W=400, Step 300, with cage	11700-21630	1 Nos/Vessel			INR		
35			ESCAPE GALVANIZED, W=400, Step 300	1200-8100	2 Nos/Vessel			INR		
36			HOLD ENTRANCE GALVANIZED, W=400, Step 300	1200-8100	1 Nos/Vessel			INR		
37			COAMING HATCH GALVANIZED, W=400, Step 300	8800-11800	6 Nos/Vessel			INR		
38			HOLD VENT GALVANIZED, W=400, Step 300	1200-8100	1 Nos/Vessel			INR		
39			HOLD ENTRANCE GALVANIZED, W=400, Step 300	1200-8100	2 Nos/Vessel			INR		
40			BW GALVANIZED, W=400, Step 300	1200-8100	2 Nos/Vessel			INR		
41			STEER GEAR ROOM GALVANIZED, W=400, Step 300	8800-10900	1 Nos/Vessel			INR		
42			CO2 ROOM GALVANIZED, W=400, Step 300	8800-10900	1 Nos/Vessel			INR		
43			BW GALVANIZED, W=400, Step 300	6100-8100	1 Nos/Vessel			INR		
44			BW GALVANIZED, W=400, Step 300	6100-8100	1 Nos/Vessel			INR		
45			FUNNEL TRUNK GALVANIZED, W=400, Step 300, platform*	5400-22950	3 Nos/Vessel			INR		
46			TOP DECK GALVANIZED, W=400, Step 300, with cage*	19950-22950	1 Nos/Vessel			INR		
47			Aft Mast GALVANIZED, W=400, Step 300, with cage*	22950-30980	1 Nos/Vessel			INR		
48			ESCAPE GALVANIZED, W=400, Step 300	8100-11800	1 Nos/Vessel			INR		



SL. NO	Intend No	Materil Code	DESCRIPTION			Net Quantity	UOM	Currency	Unit Rate	Total Price	
			LADDERS					INR	Per Vessel	(Unit rate x 8 Sets)	
			Description & remarks	Deck Location	Qty per vessel						
49			HOLD ENTRANCE GALVANIZED, W=400, Step 300	8100-11800	1 Nos/Vessel			INR			
	TOTAL BASIC PRICE										
50	Packing & Forwarding Charges / FOB Charges					8	LOT	INR	To be included		
51	Freight Charges					8	LOT	INR	To be included		
52	Other Charges, if any (specify)					8	LOT	INR	To be included		
53	Transit Insurance and Unloading Charges						By UCSL				
54	GST (as applicable)@										
55	HSN CODE										
56	Total Order value FOR UCSL STORES PRICE					8	Shipset	INR			
57	Delivery Period required at UCSL stores					UY 175 - On 30 September 2025 UY 176 - On 15 November 2025 UY 177 - On 12 Febraury 2026 UY 178 - On 12 May 2026 UY 179 - On 12 August 2026 UY 180 - On 12 November 2026 UY 181 - On 12 Febraury 2027 UY 182 - On 12 May 2027					

Signature :  
Name & Address of the firm

**Important Note:**

- 1 Un-priced Bid, to be submitted along with techno commercial bid with details like percentage of taxes & duties applicable and showing whether "Amount quoted/ Nil/ Included/ By UCSL" against respective column. Confirmation regarding exercising the option shall be provided during finalization of the purchase order.
- 2 **L1 Computation will be on Overall L1 Basis.**