



UDUPI COCHIN SHIPYARD LIMITED

UDUPI COCHIN SHIPYARD LIMITED

Ministry of Ports, Shipping and Waterways,
Government of India

CONTRACT CELL DEPARTMENT

CORRIGENDUM - 1

Tender No.: UCSSL/CC/T/W/039

Date: 17-10-2024

Sir,

CORRIGENDUM-1 – TENDER FOR WATER JET CUTTING OF PLATES

The following terms of the subject tender is amended as follows:

1. Revised Price Bid Format;

SL NO	WORK DESCRIPTION	QTY	UOM	Rate Per meter	TOTAL
1	20mm thick x 40mm width plate water jet cutting as per scope of work in Annexure-I	768	Meter		
2	30mm thick x 50mm width plate water jet cutting as per scope of work in Annexure-I	768	Meter		
3	IGST/GST..... %				
4	GRAND TOTAL AMOUNT (INR)				
AMOUNT IN WORDS:					

2. Tender opening date;

FOR	READ AS
18 th October 2024 (Friday), 15:00 Hrs	21 st October 2024 (Monday), 15:30 Hrs

3. Enclosed relevant drawings.

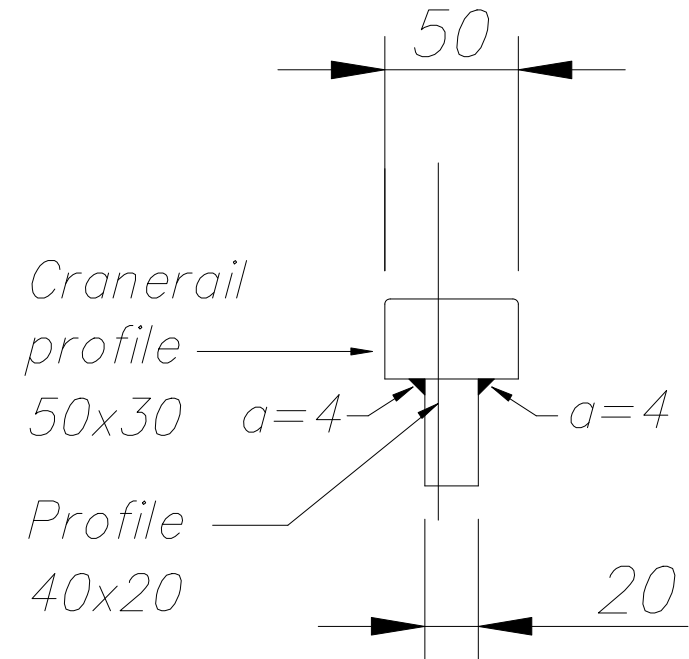
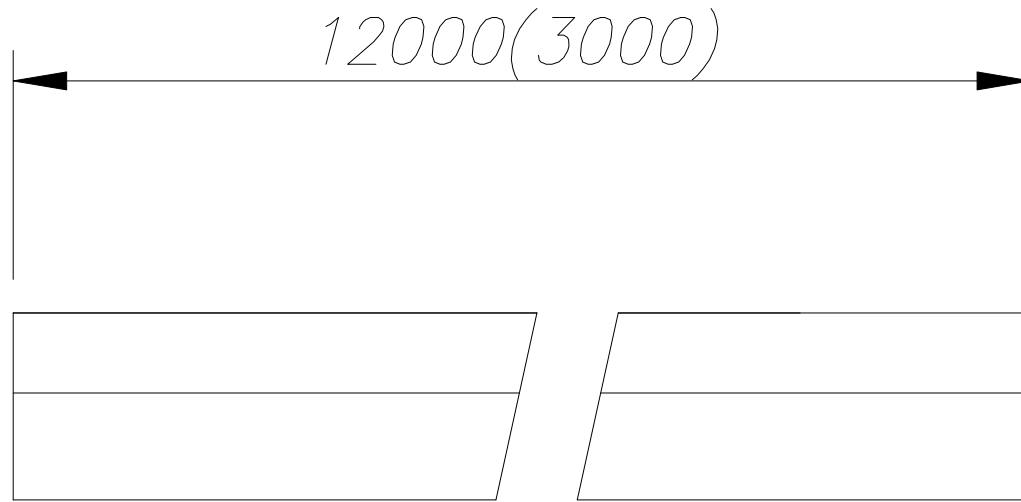
4. All the other terms and conditions of the tender enquiry remains unchanged.

For Udupi Cochin Shipyard Limited,

Assistant General Manager (Materials & Contract Cell)


सोणि क्लेमेन्ट टी एम
SONY CLEMENT T M
सहायक महाप्रबंधक/ASSISTANT GENERAL MANAGER
उडुपि कोचीन शिपयार्ड लिमिटेड
UDUPI COCHIN SHIPYARD LIMITED
माल्पे, कर्नाटक/MALPE, KARNATAKA-576 108

Portside

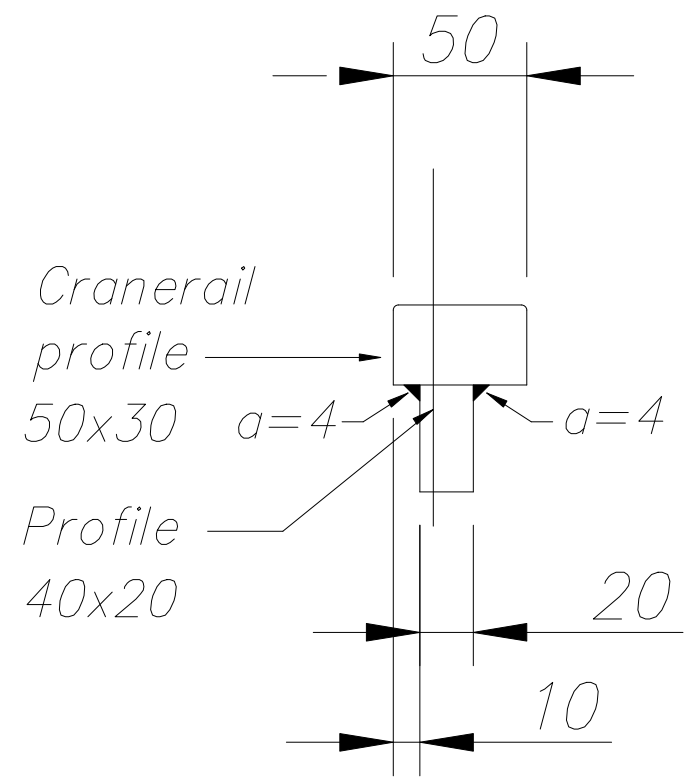
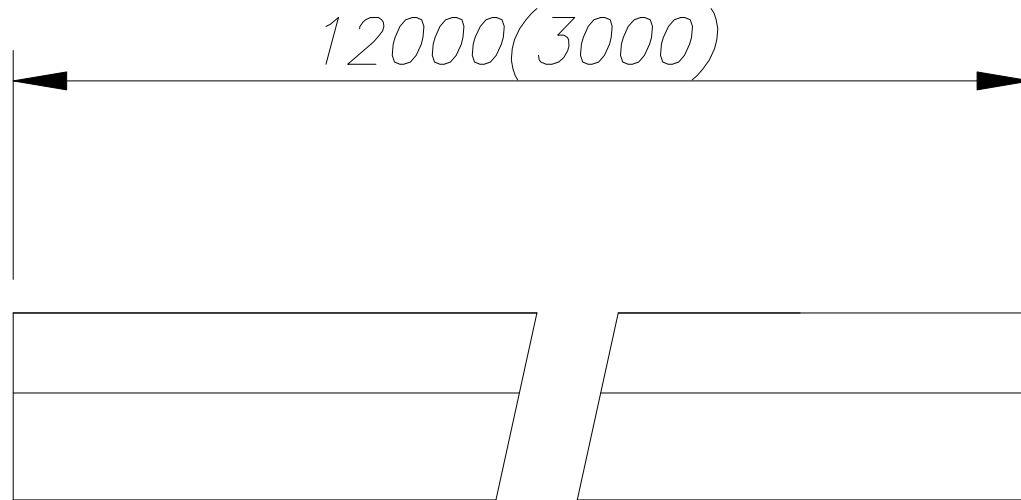


Material: DH36
 Number: 5x L=12000
 Number: 1x L=3000

Provide with 3.2 Certificate


ITEM No.	OFF No.	DWG No.	DENOMINATION	DIMENSION	MATERIAL	REMARKS
 COOPS & NIEBORG BV HOOGEZAND-HOLLAND P.O.BOX 226 9600 AE Hoogezand TEL.00-31-(0)598-395500 Fax.00-31-(0)598-392427 E-mail: tekenkamer@coops-nieborg.nl www.coops-nieborg.nl			Detail Crane-rail 12m Cranerail 3800TDW		SCALE 1:2 DRAWN-DATE R.I. 31-01-2023 CHECKED TOLERANCE SYSTEM DIN 2310	FORM A3 SHEET EDITION
Rev.			YARD DRAWING NO.:	YARD NO.: UY165	DRAWING No.	

Starboard



Material: DH36
 Number: 5x L=12000
 Number: 1x L=3000

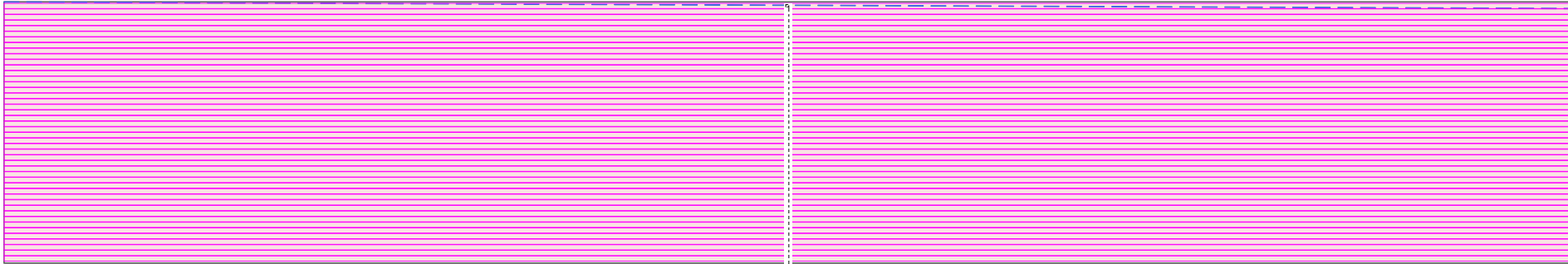
Provide with 3.2 Certificate

ITEM No.	OFF No.	DWG No.	DENOMINATION	DIMENSION	MATERIAL	REMARKS
 COOPS & NIEBORG BV HOOGEZAND-HOLLAND P.O.BOX 226 9600 AE Hoogezand TEL.00-31-(0)598-395500 Fax.00-31-(0)598-392427 E-mail: tekenkamer@coops-nieborg.nl www.coops-nieborg.nl			Detail Crane-rail 12m Cranerail 3800TDW		SCALE 1:2 DRAWN-DATE R.I. 31-01-23 CHECKED TOLERANCE SYSTEM DIN 2310	FORM A3 SHEET EDITION
Rev.			YARD DRAWING NO.:	YARD NO.:	DRAWING No.	
				UY165		



Machine: Plasma Machine II
Program Name: Y165TOY170-CRANERAIL-20MM THK-DH36-(1)

Modified by: HKTMAINOFFICE\Sunil
Modified on: 30-09-2024 14:56:44
State changed on: 30-09-2024 14:56:46
Code generated on: 30-09-2024 14:56:46



Process

Process	Sub Process	Piercings	Ignition	Letters	Dots	Tool On [m]	Processing
Plasma Torch	None	46	0	0	0	1107.7	0:58:14

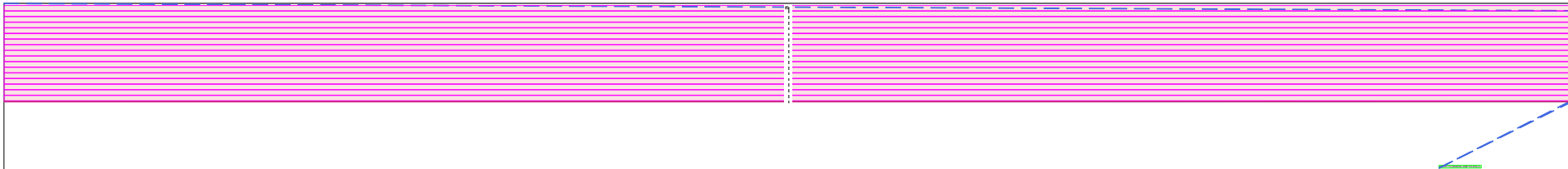
Sheet Name	Heat Number	Placement	Sheet Length [mm]	Sheet Width [mm]	Material [mm]	Thickness [mm]	Sheet Area [Sqm:]	Rapid Length [mm]
Sheet (3660)		1	12005	2000	DH36	20.00	25.40m ²	13.9m
Total Plate Weight [Kg:]	Total Part True Weight [Kg:]	Total Scrap Weight [Kg:]	Scrap Percentage [%:]	Total Pierce	Total Cut length [m]	Total Cutting Time	Scrap Area [Sqm:]	Rapid Cutting Time
3988.3kg	3466.6kg	521.7kg	13.08%	46pcs	1107.7m	0:58:14	3.32m ²	0:00:51

No.	Part	Order Name	Ordered [pcs]	Nested [pcs]	Geometry	Width [mm]	Height [mm]	Area [m ²]	Weight [kg]	Total Part Weight [Kg:]
1	Y165TOY170-CRANE RAIL-40 X 20	<None>	63	46		12000.0	40.0	0.4800	75.4	3466.6



Machine: Plasma Machine II
Program Name: Y165TOY170-CRANERAIL-20MM THK-DH36-(2)

Modified by: HKTMAINOFFICE\Sunil
Modified on: 30-09-2024 15:00:48
State changed on: 30-09-2024 15:00:55
Code generated on: 30-09-2024 15:00:55



Process

Process	Sub Process	Piercings	Ignition	Letters	Dots	Tool On [m]	Processing
Plasma Torch	None	19	0	0	0	421.4	0:22:30
Rea Ink Marker	None	0	0	0	0	0.0	0:00:04
Rea Ink Marker	Text marking	0	38	38	0	0.0	0:00:48

Sheet Name	Heat Number	Placement	Sheet Length [mm]	Sheet Width [mm]	Material [mm]	Thickness [mm]	Sheet Area [Sqm:]	Rapid Length [mm]
Sheet (3664)		1	12005	2000	DH36	20.00	9.42m ²	23.7m
Total Plate Weight [Kg:]	Total Part True Weight [Kg:]	Total Scrap Weight [Kg:]	Scrap Percentage [%:]	Total Pierce	Total Cut length [m]	Total Cutting Time	Scrap Area [Sqm:]	Rapid Cutting Time
1479.6kg	1281.1kg	198.5kg	13.41%	19pcs	421.4m	0:22:30	1.26m ²	0:00:57

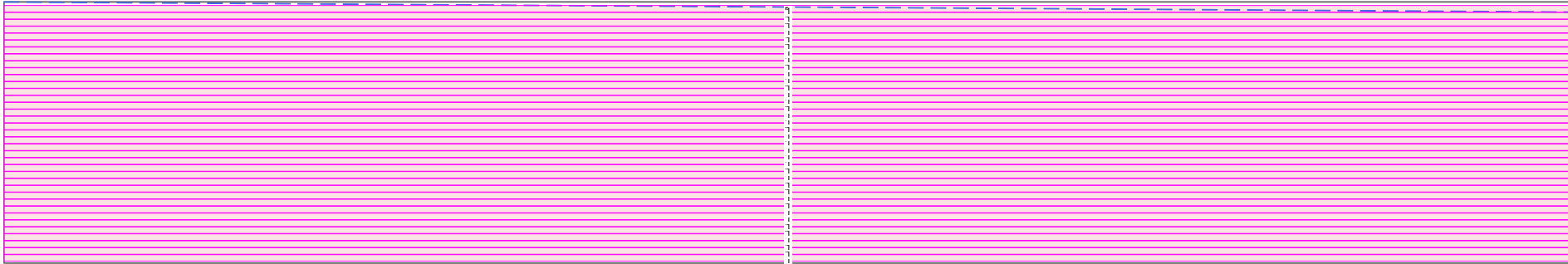
Generated Sheet	Weight [kg]	Serial Number	Width [mm]	Height [mm]	Material	Thickness [mm]	Parent Sheet	Parent Sheet's Serial Number	Geometry
Y165TOY170-CRANERAIL-20 MM THK-DH36-(2)	2357		12005	1251	DH36	20.00	Sheet (3664)		

No.	Part	Örder Name	Ordered [pcs]	Nested [pcs]	Geometry	Width [mm]	Height [mm]	Area [m ²]	Weight [kg]	Total Part Weight [Kg:]
1	Y165TOY170-CRANE RAIL-40 X 20	<None>	63	17		12000.0	40.0	0.4800	75.4	1281.1



Machine: Plasma Machine II
Program Name: Y165TOY170-CRANERAIL-30MM THK-DH36-(1)

Modified by: HKTMAINOFFICE\Sunil
Modified on: 30-09-2024 14:47:47
State changed on: 30-09-2024 14:47:49
Code generated on: 30-09-2024 14:47:49



Process

Process	Sub Process	Piercings	Ignition	Letters	Dots	Tool On [m]	Processing
Plasma Torch	None	37	0	0	0	891.7	0:46:57

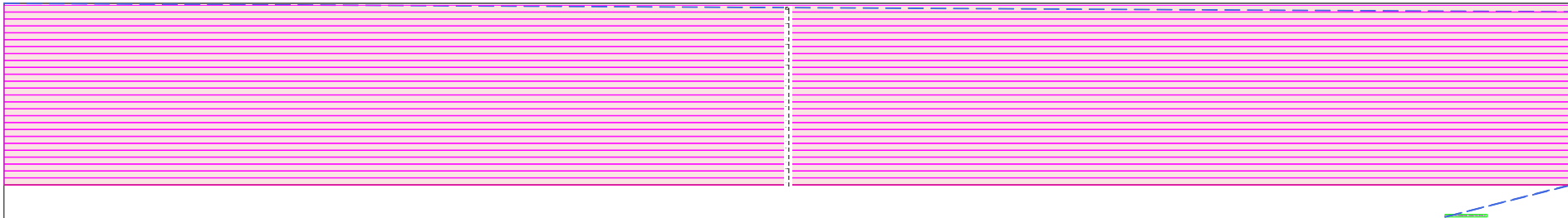
Sheet Name	Heat Number	Placement	Sheet Length [mm]	Sheet Width [mm]	Material [mm]	Thickness [mm]	Sheet Area [Sqm:]	Rapid Length [mm]
~c1856a136de94a35bf49c9f27e2d03b2		1	12005	2000	DH36	30.00	25.32m ²	13.9m
Total Plate Weight [Kg:]	Total Part True Weight [Kg:]	Total Scrap Weight [Kg:]	Scrap Percentage [%:]	Total Pierce	Total Cut length [m]	Total Cutting Time	Scrap Area [Sqm:]	Rapid Cutting Time
5963.1kg	5228.1kg	735.0kg	12.33%	37pcs	891.7m	0:46:57	3.12m ²	0:00:48

No.	Part	Order Name	Ordered [pcs]	Nested [pcs]	Geometry	Width [mm]	Height [mm]	Area [m ²]	Weight [kg]	Total Part Weight [Kg:]
1	Y165TOY170-CRANE RAIL-50 X 30	<None>	63	37		12000.0	50.0	0.6000	141.3	5228.1



Machine: Plasma Machine II
Program Name: Y165TOY170-CRANERAIL-30MM THK-DH36-(2)

Modified by: HKTMAINOFFICE\Sunil
Modified on: 30-09-2024 14:53:37
State changed on: 30-09-2024 14:53:46
Code generated on: 30-09-2024 14:53:46



Process

Process	Sub Process	Piercings	Ignition	Letters	Dots	Tool On [m]	Processing
Plasma Torch	None	28	0	0	0	638.6	0:33:57
Rea Ink Marker	None	0	0	0	0	0.0	0:00:04
Rea Ink Marker	Text marking	0	38	38	0	0.0	0:00:48

Sheet Name	Heat Number	Placement	Sheet Length [mm]	Sheet Width [mm]	Material [mm]	Thickness [mm]	Sheet Area [Sqm:]	Rapid Length [mm]
Sheet (3663)		1	12005	2000	DH36	30.00	17.84m ²	24.4m
Total Plate Weight [Kg:]	Total Part True Weight [Kg:]	Total Scrap Weight [Kg:]	Scrap Percentage [%:]	Total Pierce	Total Cut length [m]	Total Cutting Time	Scrap Area [Sqm:]	Rapid Cutting Time
4200.2kg	3673.8kg	526.4kg	12.53%	28pcs	638.6m	0:33:57	2.24m ²	0:01:04

Generated Sheet	Weight [kg]	Serial Number	Width [mm]	Height [mm]	Material	Thickness [mm]	Parent Sheet	Parent Sheet's Serial Number	Geometry
Y165TOY170-CRANERAIL-30 MM THK-DH36-(2)	1715		12005	607	DH36	30.00	Sheet (3663)		

No.	Part	Order Name	Ordered [pcs]	Nested [pcs]	Geometry	Width [mm]	Height [mm]	Area [m ²]	Weight [kg]	Total Part Weight [Kg:]
1	Y165TOY170-CRANE RAIL-50 X 30	<None>	63	26		12000.0	50.0	0.6000	141.3	3673.8